

Cincinnati Art Museum

MyCAM

Create Your Own Art Story

Adult Art Hunt





Art is full of stories waiting to be told.

Are you ready to create your own Art Story?

You will need complex characters, a stellar setting and some serious action - drama or comedy - to make your Art Story a real page turner.

Grab some paper, a pencil and your imagination and have fun!



Taking the Lead

You are the lead in of your Art Story.
But who will you be?
Pick one of our characters to play.

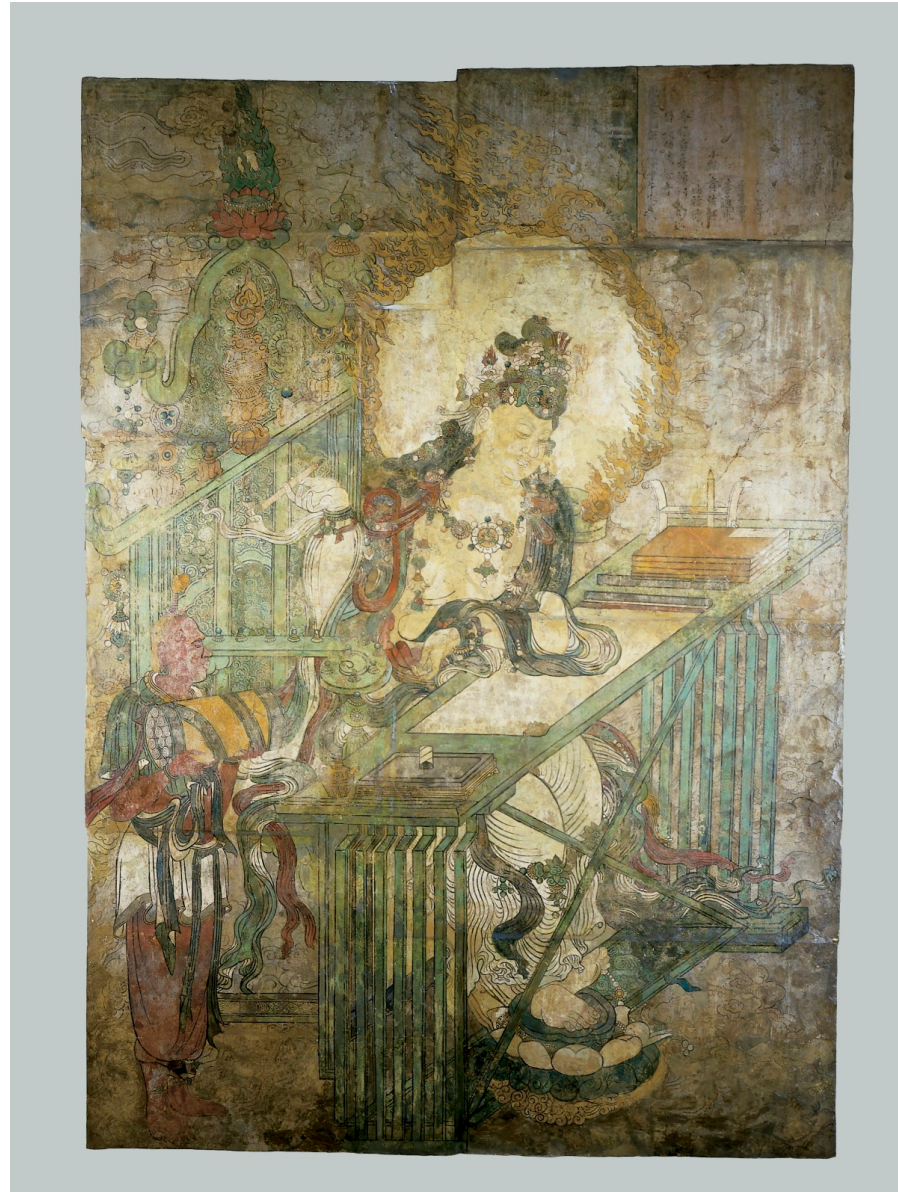
A bodhisattva of wisdom may be a smart choice - what story will he tell?

ACTIVITY:

Wenshu is a great lead character. Select another bodhisattva to serve as his trusty companion by searching <https://www.cincinnatiartmuseum.org/art/explore-the-collection> using the term "bodhisattva."

Who did you choose and why?

China, Wenshu, *Bodhisattva of Wisdom at a Writing Table*, 1354, glue tempera on mud and straw wall, Gift of C.T. Loo, 1950.154



LOOK AGAIN:

Our bodhisattva, Wenshu, waits - brush and paper at the ready - for the Buddha's revelation.

What do you think it will be?

This woman has a story waiting to be told. Is she a femme fatale or a heroine with a heart of gold?

ACTIVITY:

Head to a Venetian glass studio
to find this flirty gal.

Her first words to you will
decide her story line.

What does she say?



John Singer Sargent (1856-1925), United States, *A Venetian Woman*, 1882, oil on canvas, The Edwin and Virginia Irwin Memorial, 1972.37

LOOK AGAIN:

At the CAM, the works of
Venetian subjects in this
gallery are by American
artists.

Why do you think the Floating
City was so appealing?

A tragic young hero is the classic character for a great work of drama.

ACTIVITY:

You have selected Alexander as your hero.

You will have to help him escape the fates so he can be part of your story.

How will you help him?



Bernardino Mei (1612-1676), Italy, *Alexander the Great and the Fates*, circa 1667, oil on canvas, The Edwin and Virginia Irwin Memorial, 1988.167

LOOK AGAIN:

Follow the thread from left to right, from baby to hag, to read this tale.

What do you think is going to happen to our hero?

A solid man with strong values could make for a nice moral tale.

ACTIVITY:

Deacon Chapin, the subject of this sculpture, is a strong and moral character. Explore www.cincinnatiartmuseum.org/art/explore-the-collection and pick another artwork to serve as his dramatic foe.

Who did you choose and why?

Augustus Saint-Gaudens (1848-1907), United States, *The Puritan*, 1883-1886, bronze, Museum Purchase with funds provided by an anonymous donor, 2010.93



LOOK AGAIN:

Saint-Gaudens said that Chapin's sculpture "developed into an embodiment of the 'Puritan.'" "Do you agree or disagree?"

With your amazing imagination, you could make Eleanor Francis a great leading lady.

ACTIVITY:

She may look mild mannered, but our colonist, Eleanor, has a revolutionary streak.

How will her adventure begin? Share.



Charles Willson Peale (1741-1827), United States, *Eleanor Miller (Mrs. Francis Bailey)*, 1791, oil on canvas, The Edwin and Virginia Irwin Memorial, 1957.147

LOOK AGAIN:

Peale has captured Eleanor's direct, unflinching gaze.

What can we learn about her personality just from her eyes?



Timing is Everything

You've found your character, now you need to decide the time period for your Art Story.

Get ready for a political debate. Tippecanoe and Tyler Too are waiting for you in 1840.

ACTIVITY:

Our shopkeeper and his customer are having a heated debate.

Will you join in?

Who will win?

Share the conversation.



James Henry Beard (1811-1893), United States,
The Long Bill, 1804, oil on canvas, Gift of Mrs. T.E.
Houston, 1924.186

LOOK AGAIN:

Works like this one were very popular with the middle-class.

Why do you think they appealed to the mid-19th century American?

China in the late 13th century can be a bit exhausting. Good thing you brought your pillow.

ACTIVITY:

This pillow is painted with a scene from popular Song Dynasty literature.

You are part of the story depicted, what role do you play?



LOOK AGAIN:

Ceramic pillow use can be traced to 7th century. Some Chinese people even use them today.

Why do you think they are popular?

China, *Ceramic Pillow*, Late 13th century, stoneware, Cizhou ware, Museum Purchase, 1950.53

Spain in 1788 may not be the safest place, but it sure is action packed.

ACTIVITY:

You have joined the November 26, 1781 sortie at Gibraltar.

Are you English or Spanish? What role do you play? Share.



John Trumbull (1756-1843), United States, *The Sortie Made by the Garrison of Gibraltar*, 1788, oil on canvas with wood insert in stretcher, John J. Emery Fund, 1922.104

LOOK AGAIN:

Trumbull served under Washington in the Revolutionary War.

How do you think this experience affected his work as an artist?

Moret-sur-Loing in 1888 is a lovely spot for you to relax.

ACTIVITY:

Look, Sisley is painting on the river bank.

Ask him why he has painted this area over a 100 times. Share his response



Alfred Sisley (1839-1899), France, *Moret at Sunset*, 1888, oil on canvas, Gift of Mr. and Mrs. Albert P. Streitmann, 1953.329

LOOK AGAIN:

Sisley often painted quickly to capture the light and color of a moment before it changed.

How is that apparent in this work?

We hope you like a battle fit for the gods, because you found it in Ancient Troy.

ACTIVITY:

The Trojans vs. the Greeks,
a mythic battle in the
making. You must choose
between fighting for
Achilles or Hector.

Who do you pick and why?

Red-Figure *Volute Krater with Battle Scene*,
circa 450 BCE, The Niobid Painter (circa 475-
circa 450), Greece, clay decorated in the red-
figure technique, John J. Emery Endowment,
1987.4



LOOK AGAIN:

At a symposium or
drinking party, kraters,
like this one, were placed
in the center of the room
and used to mix water
and wine.



Location, Location, Location

Without a great setting,
your Art Story may fall flat.
What lively scene will you choose?

Go West! Cincinnati artist Joseph Henry Sharp is waiting for you in Taos, New Mexico.

ACTIVITY:

An American Indian reservation glows in the early moonlight. What will you find in one of these Crow teepees?

Set the scene.



Joseph Henry Sharp (1859-1953), United States, *Early Moonlight, Crow Reservation*, circa 1920, oil on canvas, Bequest of Alice. R. Werk, 1997.120

LOOK AGAIN:

Compare this work to others by Sharp.

How did his permanent relocation to New Mexico affect his work?

If you love chaos, then London on the day of the Southwark Fair is the place for you.

ACTIVITY:

The "Humors of a Fair" await you.

What sites and sounds will you enjoy during your day in Southwark?

Share your experience.

William Hogarth (1697-1764),
England, *Southwark Fair*, 1733,
oil on canvas, The Edwin and
Virginia Irwin Memorial,
1983.138



LOOK AGAIN:

Many of Hogarth's humorous paintings disguise a moral message.

What lesson is he trying to impart in Southwark Fair?

We hope you have your sea legs because you are going on sea adventure.

ACTIVITY:

You have just joined the crew of the "Winged Arrow." What sites will you see?

Share one adventure you hope to have while on board.



Fitz Henry Lane (1804-1865), United States, *The Ships "Winged Arrow" and "Southern Cross" in Boston Harbor*, 1853, oil on canvas, The Edwin and Virginia Irwin Memorial, 1971.31

LOOK AGAIN:

Lane was born in the sea port of Gloucester.

How do you think his experience growing up in a seafaring culture affected his work?

A quiet street in 1930s Gloucester, Massachusetts - but what is happening behind those closed doors?

ACTIVITY:

Your car has broken down. Looking for help, you knock on the door of the yellow house, it slowly opens.

What happens next?
Share.



Edward Hopper (1882-1967), United States, *Sun on Prospect Street (Gloucester, Massachusetts)*, 1934, oil on canvas, The Edwin and Virginia Irwin Memorial, 1959.49

LOOK AGAIN:

Hopper said this about his art "The whole answer is there on the canvas."

In looking at this work, what do you think he meant?

Late 19th century Japan is perfect setting for your Art Story. You may need some new clothes.

ACTIVITY:

Scribner's Magazine has sent you and the artist Robert Blum to Japan on assignment.

Share your experience at the silk merchants.



Robert Frederick Blum (1857-1903), United States, *The Silk Merchant*, Japan, 1892, oil on canvas, Gift of The Procter & Gamble Company, 2003.56

LOOK AGAIN:

Blum said this about Japan - "I was hardly prepared to drop into a new world!"

Discuss a time you may have had a similar feeling?



And...Action!

Time to become part of the action.
What adventure will you choose?

If you join this secret society in Nigeria, a performance is in your future.

ACTIVITY:

You have joined an Amanikpo men's secret society and are responsible for tonight's puppet performance.

Draw yourself dancing this puppet.



Ogoni People, Nigeria, *Puppet Figure*, post 1950, wood, Gift of Thomas D. Slater, 1991.36

LOOK AGAIN:

Amanikpo puppets were performed to celebrate individual successes.

How do you and your family celebrate personal victories?

A tea party for a fire chief is a great way to spend the afternoon.

ACTIVITY:

You are attending a tea party for the retiring Fire Chief Fenton Lawson.

Imagine the scene of a firefighter tea party and draw it.



LOOK AGAIN:

Firefighting scenes decorate this retirement gift.

Imagine you are retiring, how would your silver service be decorated?

Tea & Coffee Service, circa 1850, Beggs & Smith (estab. 1848, closed 1861), manufactory, Joseph Beggs (1808-1884) designer, silver, Gift of Corinne Lawson Pennington Coler in honor of her Great-Great-Great-Grandfather, Fenton Lawson (1808-1853), 2006.109

Visiting an exhibition may prove inspiring. What will you create?

ACTIVITY:

While visiting the Philadelphia Centennial Exhibition you see this plaque and are inspired to create something similar.

Draw your version



Relief Etched Plaque: Girl Reading, 1883, Mary Louise McLaughlin (1847-1939), United States, copper, Gift of Theodore A. Langstroth, 1970.512

LOOK AGAIN:

Mary Louise McLaughlin is known for her work in ceramics.

How does this plaque compare to her ceramic works? (search for her work here:

www.cincinnatiartmuseum.org/art/explore-the-collection

Performing in Nō Theatre in 17th century Japan - a star might just be born.

ACTIVITY:

You are the star of a Kyōgen play and will wear this mask in the performance.

How will you prepare for the role? Share.



Japan, *Kyōgen Mask*, 17th century, carved wood, gesso, and pigment, Gift of William J. Baer, 1921.253

LOOK AGAIN:

Kyōgen masks were designed with exaggerated expressions.

Make your own funny face and snap a picture. Share at #MyCAMArtHunt

With beautiful writing materials, you may just become the next great poet.

ACTIVITY:

This lacquered writing box has inspired you to write a haiku about its beautiful golden decoration.

Share your haiku.



Japan, Writing Box, 19th Century, gold lacquer, Museum Purchase, 1889.310

LOOK AGAIN:

This writing box contains an ink stone and a place for an ink stick. Necessary for when this work was created.

What features would a writing box created today need?



Happy Endings?

Will you live happily ever after or
meet a sticky end?
Your ending is in your hands.

Put your hands together for your final Art Story adventure in Ancient Egypt!

ACTIVITY:

You are in Ancient Egypt and you have joined this group performing for the pharaoh and his queen.

Draw yourself as part of this applauding troupe.



Egypt, *Tomb Relief: Female Attendants Clapping Hands*, circa 2049 BCE-1998 BCE, limestone with polychrome decoration, Gift of Joan L. Stark in memory of Louise J. Roth, 1998.54

LOOK AGAIN:

This relief was in the tomb of Egyptian Queen Neferu.

Why do you think performers were included in the burial decorations?

Stand behind Herakles (the one in the lion skin), he will keep you safe on your final adventure.

ACTIVITY:

Greek hero Herakles has just defeated the Egyptian pharaoh Busiris and you were there to see it.

Share your story of the battle.



Black-Figure Amphora: *Herakles and Busiris*, circa 540 BCE, Swing Painter, Greece, clay decorated in the black-figure technique, Museum Purchase, 1959.1

LOOK AGAIN:

This amphora is decorated with a scene glorifying a Greek hero.

If this was painted today, who or what would be represented?

So it will be a tragic end for your Art Story, how sad.

ACTIVITY:

You are now a member of this Shakespearean troupe.

What role will you play?

Pose like your character and snap a picture.

Share it at #MyCAMArtHunt.



Benjamin West (1738-1820), United States, *Hamlet: Act IV, Scene V (Ophelia before the King and Queen)*, 1792, oil on canvas, Gift of Joseph Longworth, 1882.230

LOOK AGAIN:

West has made Ophelia the star of this painting.

What artistic devices has he used to draw your attention to our maiden?

Sail into the afterlife with ten of your closest friends.

ACTIVITY:

You are the first mate on this boat, built for the tomb of its owner. Your destination is the afterlife. Share the story of your trip.



Egypt, *Boat Model from Tomb*, 2000 BCE-1800 BCE, wood with painted decoration, Gift of Millard F. and Edna F. Shelt, 1947.339

LOOK AGAIN:

This model was placed in a tomb to symbolically provide a real boat benefits to its owner.

What vehicle would you take into the afterlife?

Join the crowd and enjoy a Christmas pantomime. What a great way to conclude your Art Story.

ACTIVITY:

You are a member of this eclectic cast of characters gathered to watch the Mabley and Carew holiday show.

Draw a picture of your view.



Joseph Henry Sharp (1859-1953), United States, *Fountain Square Pantomime*, 1892, oil on canvas, The Edwin and Virginia Irwin Memorial and Gift of The Docents of the Cincinnati Art Museum in celebration of their 40th Anniversary, 2000.68

LOOK AGAIN:

The CAM's original architect and first director, were included in this painting.

Can you find them in this scene?

MyCAM is based on JourneyMaker, the family interactive experience designed and developed by the Art Institute of Chicago.

The museum worked with Paperplane Creative and Clifton Labs to bring JourneyMaker to the Cincinnati.

MyCAM is generously supported by The Ward E. Bullock Endowment for Interactive Education.