

CINCINNATI MUSEUM ASSOCIATION

# ANNUAL REPORT

2011 FOR THE FISCAL YEAR

SEPTEMBER 1, 2009 – AUGUST 31, 2010

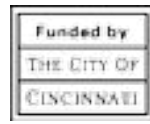


# GENERAL OPERATING SUPPORT

The Cincinnati Art Museum is supported by the generosity of individuals and businesses that give annually to **ArtsWave**.

The **Ohio Arts Council** helped fund this organization with state tax dollars to encourage economic growth, educational excellence, and cultural enrichment for all Ohioans.

The Cincinnati Art Museum gratefully acknowledges generous operating support from the **City of Cincinnati** as well as our **Members**.



On the cover: Christian Dior (1905–57); France; *Wedding Ensemble: Dress, Crinoline and Headpiece*, 1954; Linen, silk; Gift of Countess de Rochambeau; 2008.49a-c

Dear Friends,

Thank you for another year of support to the Cincinnati Art Museum. We have been very busy bringing people and art together, and you have been a major part of our success in that work. We are celebrating record-breaking attendance, and are happy that you are enjoying what we have to offer at your Art Museum.

### WHAT WE'VE BEEN UP TO

*See America* was a huge summer success, presenting nine views of America through the frames of Charley Harper prints, loans from private local collections, Thomas Schiff's stunning 360 degree panoramic photography, and photographs on display in *Walker Evans: Decade by Decade*, great prints from our collection and an iconic American Car. We also mounted close to three hundred public events, in which we sang, danced, and talked about what America means to us. We thank our friends at ArtWorks and our visitors for their participation in DRAW,



Charley Harper, *Palm Beach, FL, 1952*, cut paper collage with gouache & ink, ©Estate of Charley Harper, Image courtesy of Estate of Charley Harper, L16.2010:9

cincinnati  art museum

**S**  **AMERICA**

Views of America. Summer 2010.

*SEE AMERICA: Nine View of America attracted new visitors from April through September, 2010.*



WEDDED  
PERFECTION:  
TWO CENTURIES OF WEDDING GOWNS

*Wedded Perfection: Two Centuries of Wedding Gowns* drew record crowds, October 9, 2010 through January 30, 2011.

an interactive exhibition celebrating what it means to be an American.

In September the Schiff gallery was filled with provocative women provocatively painted by Thomas Gainsborough in the exhibition *Thomas Gainsborough and the Modern Woman*. We examined social class and gender roles, and over 34,000 visitors came to see grand portraits on loan from the J. Paul Getty Museum, National Gallery, London, Metropolitan Museum of Art, National Gallery of Art, Philadelphia Museum of Art, Krannert Art Museum, Fine Arts Museum of San Francisco, Worcester Art Museum, Tate, and the Huntington Library and Botanical Garden, alongside our own masterfully restored portrait *Ann Ford (later Mrs. Philip Thicknesse)*.

*Wedded Perfection: Two Centuries of Wedding Gowns* came complete with a fairy tale wedding, as the winners of the Wedded Perfection Wedding Giveaway will say their vows this summer right here at the Cincinnati Art Museum. Thanks to our partner vendors who donated everything from cakes to dresses and jewelry to help make this event possible. The exhibition brought in people from all over the country. We showcased designers including Christian Dior, Vera Wang, Yohji Yamamoto, as well as great 18th and 19th century gowns, in this breathtaking display, including many gowns from the Art Museum's fashion arts and textiles collection.

Our small but mighty arms and armor collection was on view in the Sara M. Vance and Michelle Waddell Gallery, and put the POW in the VOWWOWPOW fall/winter exhibition campaign.



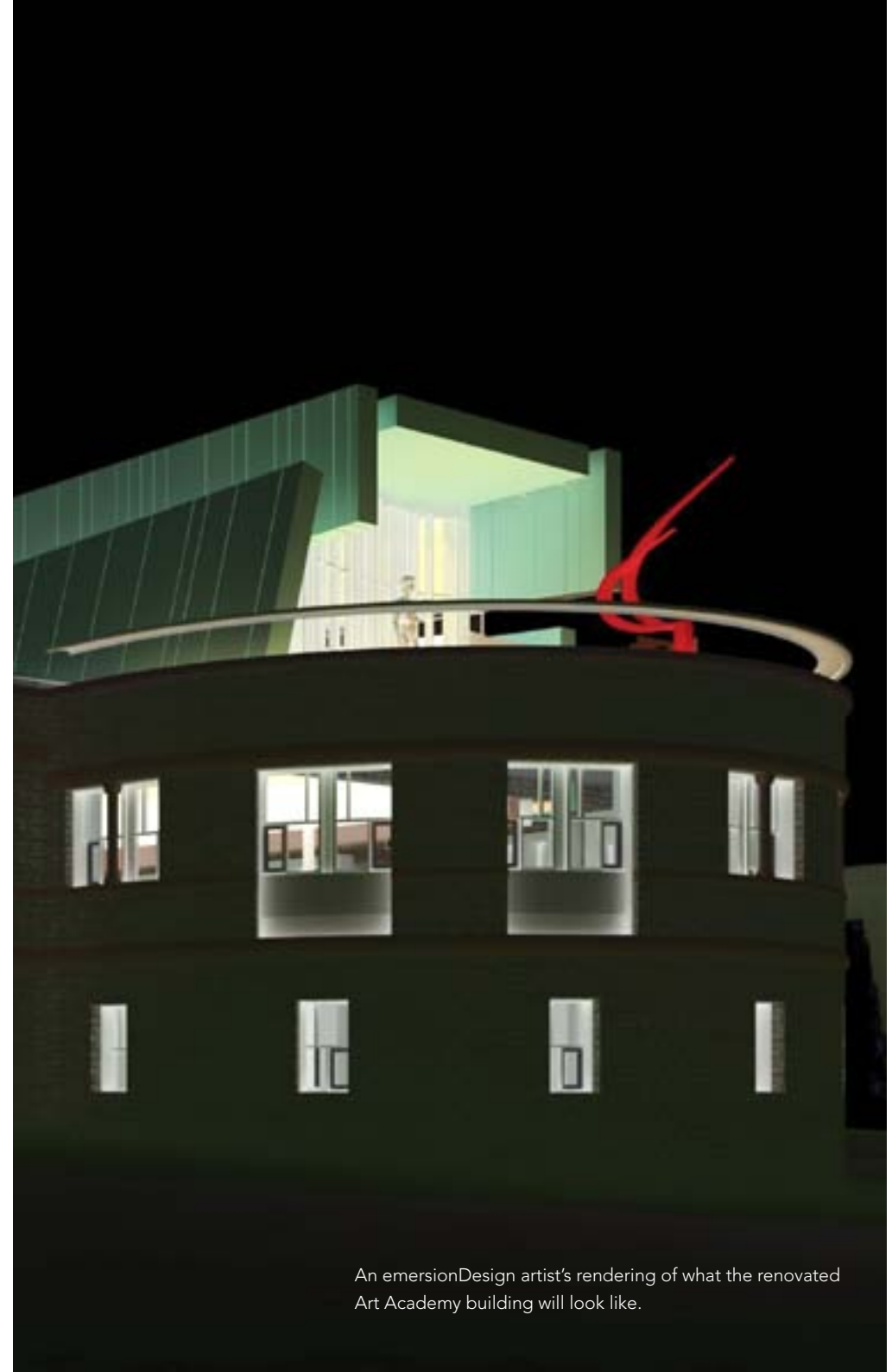
VOWWOWPOW was the theme for three record-setting exhibitions on view during the September 2010 to January 2011 fall/winter season.

Many of you came in to see what we are up to at the Art Museum over the past few months; so many, in fact, that we are breaking attendance records for exhibitions and monthly attendance that were set almost a decade ago. 125,846 visitors experienced *Thomas Gainsborough and the Modern Woman*, *Wedded Perfection*, and *Heavy Metal: Arms & Armor from the Cincinnati Art Museum* between September, 2010 and January, 2011. Many of these visitors also stopped by the Terrace Café for lunch and made purchases in the award-winning Art Museum Shop during their visit.

## WHAT'S NEXT

We are looking ahead to more improvements that will make the Art Museum even better for you. This fall we will begin work on renovating the former Art Academy Building adjacent to the museum to house a new library, public space, and staff offices. This will free up approximately 15,000 square feet of gallery and exhibition space in the current Art Museum building.

You will see a new Schmidlapp Gallery in the next few months as well. You will be overwhelmed by the two dozen greatest pieces in our collection, which we will show in splendid and concentrated isolation, so that you can fully enjoy them. After we have amazed you with those great works of art, we will invite you to peruse our other galleries, in particular Galleries 232/233. There, we will display a great many pieces from our permanent collections, including our antiquities (including the work from Petra), our Native American Collection, and selections from our



An emersionDesign artist's rendering of what the renovated Art Academy building will look like.

decorative arts collection. We will also show a changing range of fashion arts and prints, and a dense array of great paintings.

\*Note: galleries 232/233 will be closed July – September, 2011 for repairs and installation.

Exhibitions featuring works by Monet, Picasso, and Nick Cave will be on view in the coming year, along with selections from the Doane Collection of musical instruments, and a contemporary exhibition by the 4th Floor Award winner. I hope you will stop by often to see what's new at your Art Museum.

Art in Bloom 2011 is just around the corner. From November 3 – 6 the Art Museum will be alive with floral creations interpreting works throughout the Art Museum. Participate in the many docent led tours, events, and workshops. Look for more information in the coming months on this community favorite.

There is always something great happening at your Art Museum. Members at every level receive invitations to exclusive events throughout the year, from exhibition opening receptions to black tie dinners, this is definitely a place to see and be seen.

Check us out online. Over the summer we will roll out a freshly redesigned and reconfigured website that will allow you to interact with the collections in a whole new way. Share your thoughts and ideas, get directions, check out what's new and sync your calendar with the latest Art Museum events.



The Cincinnati Art Museum's website is being redesigned to be more visitor-friendly and information-rich.



Please take a few moments to look through the rest of this report, which includes highlights of the past year, exhibition plans for the year to come, and the very important business of thanking our many donors and supporters, without whom none of our work would be possible.

Keep visiting the Cincinnati Art Museum, keep learning, keep experiencing the treasures we hold here in trust for you and this community.

Sincerely,



Aaron Betsky  
Director



Always a hugely popular event, *Art in Bloom* returns in November 2011.



JUST UP THESE STAIRS.

At an event for *The Amazing American Circus Poster*, guests enjoyed a performance by local performers and Circus Mojo in Spring 2010.

# Upcoming Exhibitions\*

## 2011/2012 Season

\*subject to change; tentative schedule as of May 1, 2011.

#### 4th Floor Award

September 17 - November 27, 2011

The winner of the second biennial 4th Floor Award, Darren Goodman of Waynesville, Ohio, will exhibit original works of contemporary art in the Sara M. Vance and Michelle Waddell Gallery.

#### Darkness Into Light: Mezzotint Rediscovered

September 24, 2011 - January 1, 2012

Seventeenth century Dutch painters and printmakers sought to depict chiaroscuro and convey atmospheric depth. Although a variety of relief and intaglio techniques existed, a nonlinear graphic process that could translate painting's tonal values and surface textures had eluded artists, engravers and publishers. In 1642, an amateur, Ludwig van Siegen of Utrecht, discovered a new technique, mezzotint, where the artist works from dark to light. Drawn from the Art Museum's permanent collection this show presents landmarks in the history of mezzotint from 1642 through its heyday as a reproductive medium in eighteenth century portraiture in England, and on through the creative use of the medium today.



John Smith, *Lieutenant Colonel Sir Banastre Tarleton*, 1782, mezzotint, Bequest of Herbert Greer French, 1943.481



(detail) Claude Monet, *ROCKS AT BELLE-LLE, PORT-DOMOIS*, 1886, oil on canvas, Fanny Bryce Lehmer Endowment and The Edwin and Virginia Irwin Memorial, 1985.282

## Art Deco: Fashion and Design in the Jazz Age

October 8, 2011 - January 1, 2012

This intimate installation will provide the visitor with a view into the singular design style of the 1920s through the popularity of fashion arts. By pairing the most striking pieces in the Colker collection with decorative arts from the permanent collection, fashion illustrations from the museum's library, and a few possible loans of photography or poster art, themes such as architectural forms, the use of geometry, symmetry vs. asymmetry, functionality vs. glamour, and the purely decorative aspects of Art Deco can be explored in the cross-media installation.

## The Collections: 6,000 years of art

Opening Fall 2011

6,000 Years is an exhibition concept of "open storage," which brings into view hundreds of objects from across the spectrum of the permanent collection. Visitors will gain a much greater understanding about the depth of our holdings and our true strengths as a collecting institution.

## Picasso Master Prints

December 17, 2011 - March 25, 2012

Picasso's dialogue with old masters of European art, his Spanish heritage, and



Pablo Picasso, *Weeping Woman in Front of Wall*, 1937, aquatint and drypoint, Gift in memory of Margorie Levine Klein, 2000.152

the highly autobiographical content of images of his wives and lovers are revealed through these works selected from the Art Museum's permanent collection. His ingenious magic with etching, lithography and linocuts is explored in six decades of printmaking.

**Nick Cave: Meet Me at the Center of the Earth**

*January 21 - April 29, 2012*

Chicago-based artist Nick Cave combines aspects of sculpture, fashion design, dance and video art in his larger-than-life 'Soundsuits'. These full body, form fitting 'suits' are layered and textured with metal, plastic, found objects, and colorfully dyed human hair designed to rattle, swish, and resonate in rhythm with the movements of the wearer, usually Cave himself. This exhibition is the largest scale presentation of his work to date.

**Monet in Giverny**

*February 4 - May 13, 2012*

Monet's late works depicting the flora and topography of his estate at Giverny are arguably the most important works of his career and certainly for the later history of art. This small show aims to provide the viewer both a historical basis of his house, studio and surroundings as well as



an analysis of the formal particularities of a select group of paintings produced at Giverny.

**The Art of Sound: Four Centuries of Musical Instruments**

*June 9 - September 2, 2012*

This exhibition will draw from our permanent collection of over 800 classical and ethnographical musical instruments, the majority of which were given to the Art Museum in 1914 and 1919 by Cincinnati William Howard Doane. Most of these instruments from this remarkable collection have never been properly catalogued and until now have been unavailable to visitors. It's a rare opportunity to experience this niche in music's history and development.

Antonio Amati and Hieronymus Amati, *Viola*, 1619, Italy,  
Gift of Mrs. Peter Gibson, 1911.1911

# Learning & Interpretation

Report FY 09/10





- **Online Searchable Database of Teacher Resources**

With our online searchable database (available on the Cincinnati Art Museum website, [www.cincinnatiartmuseum.org](http://www.cincinnatiartmuseum.org)), educators have free access to over one hundred cross-curricular lesson plans and teachers guides that tie objects from the Art Museum's permanent collections to national curriculum standards. To complement this year's Amazing American Circus Poster exhibition, a 21-page, full-color teacher's guide was developed and uploaded to the database for educators to incorporate the exhibition themes into their daily curriculum. Suggested science connections included the investigation into the physics of movement and its relation to circus performances, while language arts connections included the development of promotional slogans similar to those used in circus posters.

- **Art for Life**

The community engagement initiative of the Cincinnati Art Museum, Art for Life, continued to expand partnerships in our target communities. In 2009-2010 Art for Life served 10,234 community members through programs ranging from art making workshops to exhibitions. Art for Life continues to develop new partnerships including those with the Lindner Center of HOPE, Community Concepts and Mercy Montessori School.



- **Teen Advisory Board 2010 High School Student Art Show**

Now in its fifth year, The Cincinnati Art Museum's Teen Advisory Board is responsible for planning and implementing teen programming at the Art Museum including teen writing workshops, films nights, art making activities, and unconventional fashion shows. In 2009-10 the Teen Board hosted four Teen Studio Nights, including a high school art show. Over 300 students from 20 area high schools submitted nearly 1,000 works for consideration to the art show. From this, the Teen Advisory Board selected 65 works for display at the Art Museum's student art show. Over 200 people attended the show's opening reception. The Teen Advisory Board meets regularly with staff from the Learning and Interpretation Division to plan programs that engage teens and encourage personal connections to the Art Museum's collections.

- **Docent 50th Anniversary**

The volunteer docents of the Cincinnati Art Museum celebrated the program's 50th year of service. The program was started in 1960 and we still have one docent from the original group who still takes active part in our visitor tours. The docents held a gala fundraiser with the money raised going towards the purchase of one of the Tiffany windows (*Angel with Lilies*).



The DRAW free-sketching wall in the Balcony above the Front Lobby let hundreds of amateur (and future) artists have some fun during SEE AMERICA.

- **Artworld**

In 2009-2010 the Cincinnati Art Museum family interactive/studio space served 7,468 visitors in 103 programs/days open. Artworld rotates its interactive exhibition space three times a year.

In 2009-2010 Artworld exhibitions included:

**Flights of Fancy (Decorative Arts):** A dark but sparkly look at the use of flora and fauna-themed elements in the creation of decorative arts, especially jewelry. This installation was created in conjunction with the *Imperishable Beauty* exhibition.

**The Art of Pointing (Photography):** A hip, flash investigation of the history of photography – everything from how the original process worked, to a mini photo-shoot studio, to a comparison of photography and other art forms, to an opportunity to take digital pictures around the museum and see them posted on our website.

**Your Place or Mine? (American Architecture):** This installation featured American architecture from the ground up. Materials, structures, styles, and urban planning were explored through the use of various interactive stations.

- **See America Summer Programming & Events**

In addition to *See America's* Nine Views of America through exhibitions, the Cincinnati Art Museum offered free, daily programming at 12:30 p.m. in *Coast to Coast: American Prints 1960-2010* for a dose of "What America Means to Me." The programming, located in a dedicated community space called the DRAW lounge, ranged from poetry with Art Museum Director Aaron Betsky, to a drum circle, to Jazz music and painting demonstrations. Visitors were encouraged to expect the unexpected.

In addition, there were several thematic weekends throughout *See America*:

**June 12: The Community Comes Together: Opening Event**

The theme of the day was America the Melting Pot, with a performance by the Cincinnati Brass Quintet Bi-Okoto Drum and Dance and the Country Step Cloggers. Local chambers of commerce had tables displaying information on the many cultures that make us all "American." The opening was from noon - 3 p.m.

**June 19-20: America Writes**

This included a public tour of American art that depicted works from literature or tells a story. Also, local celebrities and actors joined Art Museum staff for the Live Read of *On the Road* by Jack Kerouac. They attempted to read the entire masterpiece in one day. Visitors were invited to a Writing Workshop of Women Writing for a Change.

**July 10-11: America Listens**

This weekend included a plethora of live music, a movie marathon and art making. American music was heard throughout the museum, from bluegrass to jazz to classical. The Movie Marathon showed Great American Musicals. And families were invited to visit ArtWorld, where children made their own percussion instruments.

**July -25: America Drives**

The Art Museum hosted a Classic Car Show and Rally in honor of the 1956 Ford Thunderbird on display in the Art Museum. Also that weekend at the Art Museum was the 48 hour Film Fest.

### August 14-15: Great American Cookout

For the finale of *See America* event weekends, this was truly a celebration at the Art Museum. There was an All-American Cookout including games, hot dogs, live music and more. The Cincinnati Reds vs. Florida Marlins game was broadcasted live in the Great Hall. There was a Cornhole Competition in the Courtyard, as well as a Board Game Competition in the Draw gallery. Guests created their own baseball cards, participated in Wii batting cage games, and enjoyed a live performance by Jake Speed and the Freddies.

### See America Programs – Final Attendance Numbers

#### What America Means to Me – Daily Program

2850 people /54 programs = 52.7 average

#### Theme Weekends

June 12th Community Opening	680 people
June 19th On the Road LIVE READ	200 people
June 20th American Poetry Slam	132 people
July 10th America Sings	416 people
July 11th America Sings	220 people
July 25th Classic Car Show and Rally	1200 people
August 14th All American Cook-out	119 people

#### Reel Art

June 4 & 6 <i>Black, White &amp; Gray</i>	19 people
June 16 & 18 <i>Walker Evans: America</i>	32 people
July 16 & 18 <i>Dead Man</i>	31 people
August 6 & 8 <i>The Exiles</i>	5 people
August 20 & 22 <i>The Last Cowboys</i>	15 people

### Gallery Talks

Friday, June 4 Jéssica Flores Garcia	6 people
Saturday, June 26 Julie Aronson & Amy Dehan	3 people
Friday, July 2 Benedict Leca	18 people
Saturday, July 31 James Crump	17 people
Friday, August 13 Kristin Spangenberg	3 people

### Studio Sundays

#### Summer Teacher Institute

#### Summer Art Trek

#### Summer Art Connections

30 people  
53 people  
481 people  
65 people (total for each week combined)

### Public Tours (June 1- August 31)

June 2010

41 Public Tours  
216 Visitors

July 2010

38 Public Tours  
213 Visitors

August 2010

42 Public Tours  
220 Visitors

### TOTAL

**7244 visitors**  
**212 programs**



# **CURATORIAL REPORT**

Exhibitions FY 09/10

Twenty-four special exhibitions were directed and brought to fruition. Of these, twenty-three were organized by the Cincinnati Art Museum and one was organized by another institution and displayed at the Museum. The Division also assisted in a number of installations throughout the Museum.

### **Gallery 232/233**

- *Roaring Tigers, Leaping Carp: Decoding the Symbolic Language of Chinese Animal Painting*  
(October 9, 2009 – January 3, 2010)
- *Starburst: Color Photography in America 1970-1980*  
(February 13 – May 9, 2010)
- *Walker Evans: Decade by Decade*  
(June 12 – September 5, 2010)
- *Cincinnati Collects America*  
(June 12 – September 5, 2010)
- *Big Country: Charley Harper Draws America*  
(June 12 – September 5, 2010)

### **Gallery 234/Schiff**

- *Imperishable Beauty: Art Nouveau Jewelry*  
(November 17, 2009 – January 17, 2010)
- *Kara Walker Portfolio*  
(February 20 – May 2, 2010)
- *Coast to Coast: American Prints 1960-2010*  
(May 29 – August 15, 2010)
- *Draw 2010*  
(May 29 – August 15, 2010)



*Imperishable Beauty: Art Nouveau Jewelry*  
November 17, 2009 – January 17, 2010





*Starburst: Color Photography in America 1970-1980*  
February 13 – May 9, 2010

### Gallery 235/Balcony

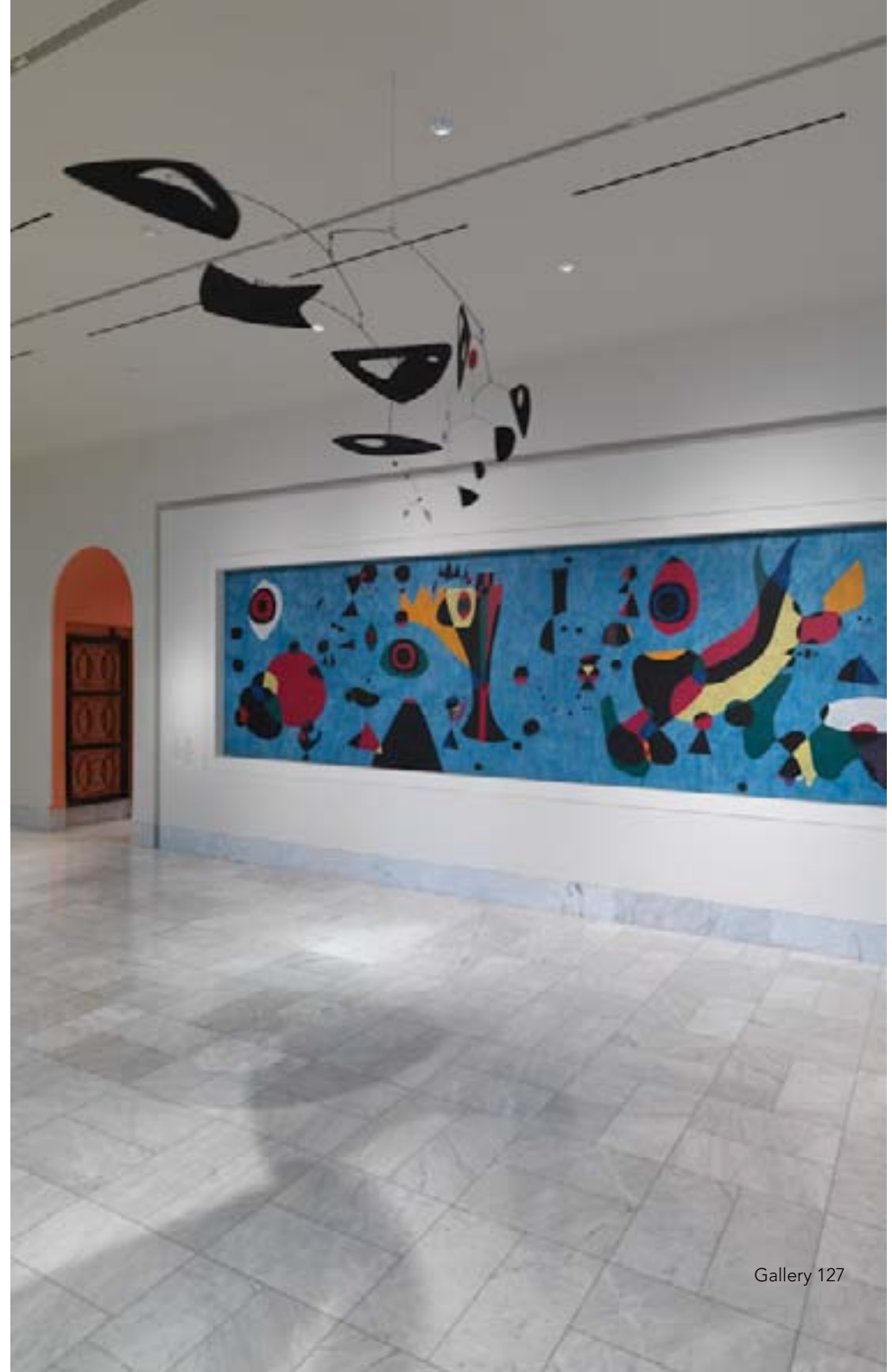
- *Imperishable Beauty: Art Nouveau Jewelry*  
(November 17, 2009 – January 17, 2010)
- *Edna Boies Hopkins Color Woodcuts*  
(February 20 – May 2, 2010)
- *Draw 2010*  
(May 29 – August 15, 2010)

### Gallery 222/223/Ambulatory

- *Imperishable Beauty: Art Nouveau Jewelry*  
(November 17, 2009 – January 17, 2010)
- *Martin Puryear Prints*  
(January 30 – June 13, 2010)
- *ArtWorks: The American Road*  
(June 22 – August 29, 2010)

### Vance Waddell Gallery

- *Don Lambert: Supernova Terra Firma*  
(September 5 – November 29, 2009)
- *electric earth* by *Doug Aitken*  
(December 19, 2009 – April 4, 2010)
- *Thomas Schiff: Vegas 360°*  
(May 1 – September 26, 2010)



Gallery 127

## Gallery 101

- A. Car Rotations
  - 2007 Morgan Aero 8  
(August 31, 2009 – January 11, 2010)
  - 1960 Parilla Super Speedster Motorcycle and  
1947 Indian Chief Motorcycle  
(January 11 – April 26, 2010)
  - 1956 Ford Thunderbird  
(April 26 – August 30, 2010)
- B. New To The Collections
  - *Scholar's Rock and Cincinnati Silver*  
(August 17 – December 6, 2009)
  - *Diderot Bust*  
(December 12, 2009– April 4, 2010)
  - *Robert Rauschenberg: Star Quarters*  
(April 9 –September 20, 2010)
- C. Art 101
  - *Famous Faces, Average Joes: The Work of C.F. Payne*  
(September 1, 2009 – January 10, 2010)
  - *Let Fall*  
(January 21 – June 13, 2010)
  - *The View from Here: Mason, Ohio*  
(June 26 - August 22, 2010)



Indian Motorcycle Company, *Indian Chief*, 1947,  
From the Collection of Mark Radtke, L2.2010

### **Museum-wide**

- Art in Bloom  
(November 5 - 8, 2009)

### **Gallery 226**

- *Force of Nature*, installation of Japanese ceramics from the Horvitz collection  
(August 9, 2010 – May 22, 2011)

### **We reinstalled two galleries:**

#### **European Art**

- Gallery 224 – 230  
(Open November 2009)

#### **Contemporary Art**

- Gallery 303  
(Open November 2009)



Contemporary Art  
Gallery 303

# ACCESSIONS

2000.334

ONE-HANDLED DISH

Iran

Late 2 BC-Early 1 BC

One-handed dish with stylized loop handle; base with incised, scalloped perimeter

earthenware, with incised decoration

H. 2 3/8 in. (6 cm), Diam. rim 7 1/2 in. (19 cm)

Gift from the Collection of Charles B. and Doris M. Levinson

2000.335

TRIPODIC ONE-HANDLED JAR

Iran

8th Century BC-7th Century BC

Tripodic one-handed jar; earthenware; central spout with three animal-headed terminals emerging from shoulder; applique blobs on terminals

earthenware, handmade, with applied decoration

H. 4 5/16 in. (11 cm)

Gift from the Collection of Charles B. and Doris M. Levinson

2000.336

HEMISPHERICAL BOWL

Western Iran/Iran

5000 BC-4000 BC

Hemispherical, footless bowl with red-painted, hatched cross design on interior; rim decoration of pendent points; earthenware;

Ubaid-style. Complete. Reassembled from four fragments.

earthenware, with red-painted decoration

H. 2 3/4 in. (7 cm), Diam. rim 6 1/2 in. (16.5 cm)

Gift from the Collection of Charles B. and Doris M. Levinson

2000.337

HEMISPHERICAL BOWL

Western Iran/Iran

5000 BC-4000 BC

Hemispherical, footless bowl with brown-painted hatched decoration in cross design. Ubaid-style.

earthenware, with brown-painted decoration

H. 2 3/8 in. (6 cm), Diam. rim 5 13/16 in. (14.8 cm)

Gift from the Collection of Charles B. and Doris M. Levinson

2000.338

TRIPODIC BOWL WITH THREE LOOPED FEET

Israel-Palestine

1000 BC-800 BC

Tripodic bowl with three looped feet; Judaeen manufacture earthenware

H. 4 1/8 in. (10.5 cm), Diam. 11 in. (28 cm)

Gift from the Collection of Charles B. and Doris M. Levinson

Yasuhisa Kohyama, *KAZE (WIND)*, 2009, Museum Purchase with funds provided by The Jeffrey Horvitz Foundation with Carol Horvitz



# ACCESSIONS

2000.339

ZOOMORPHIC VESSEL IN SHAPE OF HORSE

Iran

2nd Century AD-6th Century AD

Zoomorphic vessel in shape of horse; incised, hatched linear decoration overall; pouring hole (spout) in chest; gray earthenware earthenware, with incised decoration

H. 6 5/16 in (16 cm), L. 6 11/16 in. (17 cm)

Gift from the Collection of Charles B. and Doris M. Levinson

2000.340

BUTTON-BASED HANDLELESS JAR

Western Iran/Iran

8th Century BC-7th Century BC

Button-based, handleless jar; buff earthenware with cream slip; reddish-brown painted decoration in "genre Luristan" style with hanging-kite design earthenware, with painted decoration over slip

H. 5 7/8 in. (15 cm)

Gift from the Collection of Charles B. and Doris M. Levinson

2000.341

TWO-HANDLED TRIPODIC JAR

Western Iran/Iran

2000 BC-1000 BC

Tripodic jar with two small lug handles; brown-painted geometric decoration in two zones on body and neck; two perforations in rim for suspension; buff earthenware. (Giyān III; Godin 3:1) earthenware, with brown-painted decoration

H. 4 3/4 in. (12 cm)

Gift from the Collection of Charles B. and Doris M. Levinson

2000.342

TWO-HANDLED PILGRIM-FLASK

Israel

800 BC-700 BC

Two-handled decanter; double strap handles with paired bosses beneath; earthenware. Judaeān. Intact. (See parallel in Cincinnati Art Museum Glueck Collection for photo similar type) earthenware, wheel-thrown, with incised compass-drawn concentric circles

H. 10 5/8 in. (27 cm), Diam. max 6 11/16 in. (17 cm)

Gift from the Collection of Charles B. and Doris M. Levinson

# ACCESSIONS

2000.343

BASKET-HANDLED SPOUTED STAINER JUG

Israel

9th Century BC-8th Century BC

Loop-handled strainer jug with trough spout; red earthenware;

Judaean. Intact

earthenware

H. 11 5/8 in. (29.5 cm)

Gift from the Collection of Charles B. and Doris M. Levinson

2000.344

ZOOMORPHIC VESSEL IN SHAPE OF PACK ANIMAL

Israel

8th Century BC

Zoomorphic vessel in form of pack animal (horse or donkey) bearing jugs; on four loop feet (one broken); earthenware, wheel-thrown.

Syro-palestinian

earthenware, wheelthrown with hand-made additions

H. 6 7/8 in. (17.5 cm), H. to spout 5 5/16 in. (13.5 cm), L. 7 7/8 in. (20 cm)

Gift from the Collection of Charles B. and Doris M. Levinson

2001.319

ECHO SERIES

Randall LaGro

2001

Floating figure center; smoke and file from container below.

elongated snake with raised head at bottom

monotype in brown

platemark 19 3/16 x 17 11/16 in. (48.7 x 44.9 cm) on sheet 23 13/16 x

22 5/16 in. (60.5 x 56.7 cm)

Gift of Allen W. Bernard

2001.320

FREEDOM: A FABLE

Kara Elizabeth Walker

1997

Pop-up silhouette book with 4 illustrations

pop-up silhouette illustration

binding 9 5/16 x 8 5/16 in. (23.6 x 21.1 cm)

Gift of Timothy and Sally Rub





Alfred Bricher, *SUNSET AT MANOMET, PLYMOUTH, MASS.*,  
Circa 1890, Museum Purchase: Fanny Bryce Lehmer Endowment

# ACCESSIONS

2001.321

HEAD OF PRIESTESS OR GODDESS

Cyprus

Late 5th Century BC-Early 4th Century BC

This wreathed limestone female head is a product of the sculptural tradition of the island of Cyprus in the eastern Mediterranean. Her wreath, either of laurel or olive, marks her as a goddess or perhaps a head priestess. The subject's bonnet, made of a knit or woven material, is decorated with rosette flowers, indicating a ceremonial function. A hairpiece protrudes from the bonnet's back. The statue's hairstyle, as well as the shape of the eyes and style of the mouth, indicates that its Cypriot maker was influenced by Greek sculpture from the mainland

limestone with traces of pigment

H. 12 in. (30.5 cm); H. of head 9 7/8 in. (25.1 cm)

Museum Purchase

2002.187

SALMON OF KNOWLEDGE / FIONN

Joel L. Elgin

Circa 2002

Fish head

color intaglio

platemark 18 1/16 x 24 in. (45.9 x 61 cm) on sheet 20 1/2 x 26 1/8 in. (52.1 x 66.3 cm)

Gift of the Artist

2003.355

COPPER PLATE NUDES II (3)

Nathan Oliveira

2001

Nude standing on one foot

color spit bite aquatint with aquatint and texture from the back of a discarded plate

platemark 15 3/4 x 10 11/16 in. (40 x 27.1 cm) on sheet 25 7/8 x 19 3/4 in. (65.7 x 50.2 cm)

Museum Purchase with funds provided by Leo Munick, M.D.

2004.522

HANNAH ANN ELIZA CROPSEY ROORBACH

American School

United States

Circa 1826

The subject is posed 1/2 to left, facing 1/2 left with gaze directed at the viewer. Her dark hair is parted at the center and curled on the sides with a braid at the top held in place by a tortoise shell comb.

Her eyes are dark, nose straight, and mouth full. She wears a black dress with a straight neckline edged in lace. Pair with 04/05.27:467

Orville Augustus Roorbach, her husband

watercolor on ivory

2 15/16 x 2 1/4 in. (7.5 x 5.7 cm)

Gift of Mr. and Mrs. Charles Fleischmann III

# ACCESSIONS

2004.523

ORVILLE AUGUSTUS ROORBACH

American School

United States

Circa 1826

The sitter is taken 3/4 to right, facing 1/2 right with gaze bent upon the viewer. His dark hair is parted to his right, worn short at collar length and at ear level. He has a straight nose and is clean shaven. He wears a black jacket with a high wide collar and notched lapel, a black waistcoat, neckband and shirt and a white wing collar. Pair with 04/05.27:466 Hannah Ann Eliza Cropsey Roorbach, his wife  
watercolor on ivory

3 x 2 3/8 in. (7.6 x 6 cm)

Gift of Mr. and Mrs. Charles Fleischmann III

2004.524

MARY ANN LOW (MRS. HENRY SOMES LOW) WITH HER TWIN SONS

American School

United States

Circa 1823-Circa 1824

Rectangular miniature of Mrs. Henry Somes Low with her twin sons William Whittemore Low and Henry Wentworth Low. Mrs. Low is seated in a red upholstered high-back chair facing the viewer. Her brown hair is parted in the center with curls to the sides of her face. Her hair is pulled up in the back and tied with a white ribbon and decorated with a large comb. She wears a black short-sleeved empire dress over an under dress with long sleeves and a ruffled collar tied with a pink bow. On her lap are the twins. Both of them have blond hair and blue eyes. One of the boys wears a white dress and the other a blue dress

watercolor on ivory

3 3/4 x 2 7/8 in. (9.5 x 7.3 cm)

Gift of Mr. and Mrs. Charles Fleischmann III

# ACCESSIONS

2004.1153.1

REMANSILLO

Sean Scully

New York/New York/United States

2003

Federico García Lorca poetry from "De Suites " (from "Suites") left. 1 of 10 from "Etchings For Federico García Lorca"

color aquatint, sugarlift, and spitbite

platemark 6 15/16 x 8 15/16 in. (17.6 x 22.7 cm) on sheet 17 15/16 x 28 in. (45.6 x 71.1 cm)

Gift of the Artist

2004.1153.1-10

ETCHINGS FOR FEDERICO GARCÍA LORCA

Sean Scully

New York/New York/United States

2003

10 poems by Federico García Lorca, left, image right. Red clam shell box

portfolio of 10 color aquatint, sugarlift, and spitbite

each sheet approximately 18 x 28 in. (45.7 x 71.1 cm); clam shell box 19 1/2 x 29 3/4 x 2 3/16 in. (49.6 x 75.6 x 5.6 cm)

Gift of the Artist

2004.1153.2

MEDITACIÓN PRIMERA (Y ÚLTIMA)

Sean Scully

New York/New York/United States

2003

Federico García Lorca poetry left from "De Suites" (from "Suites"). 2 of 10 from "Etchings for Federico García Lorca"

color aquatint, sugarlift, and spitbite

platemark 8 7/8 x 6 15/16 in. (22.5 x 17.7 cm) on sheet 18 x 28 in. (45.7 x 71.1 cm)

Gift of the Artist

2004.1153.3

¡CIGARRA! (Cicada!)

Sean Scully

New York/New York/United States

2003

Federico García Lorca poetry from [...] left. 3 of 10 from "Etchings for Federico García Lorca"

color aquatint, sugarlift, and spitbite

platemark 6 7/8 x 8 15/16 in. (17.5 x 22.7 cm) on sheet 18 1/16 x 27 15/16 in. (45.8 x 71 cm)

Gift of the Artist

# ACCESSIONS

2004.1153.4

[...]

Sean Scully

New York/New York/United States

2003

Frederico García Lorca poetry from "De Libro de poemas" (from "Book of Poems ") left. 4 of 10 from "Etchings for Frederico García Lorca"

color aquatint, sugarlift, and spitbite

platemark 8 7/8 x 6 15/16 in. (22.5 x 17.7 cm) on sheet 17 15/16 x 28 in. (45.6 x 71.1 cm)

Gift of the Artist

2004.1153.5

ARLEQUÍN (Harlequin)

Sean Scully

New York/New York/United States

2003

Frederico García Lorca poetry from "De Canciones 1921-1924" (from Songs 1921-1924) left. 5 of 10 from "Etchings for Frederico García Lorca"

color aquatint, sugarlift, and spitbite

platemark 6 15/16 x 8 7/8 in. (17.7 x 22.6 cm) on sheet 18 1/16 x 28 in. (45.8 x 71.1 cm)

Gift of the Artist

2004.1153.6

ECO DEL RELOJ (Clock Echo)

Sean Scully

Lenox/New York/United States

2003

Frederico García Lorca poetry "De Suites" (from "Suites") right. 6 Of 10 from "Etchings for Frederico García Lorca"

color aquatint, sugarlift, and spitbite

platemark 8 7/8 x 6 15/16 in. (22.6 x 17.7 cm) on sheet 18 x 28 in. (45.7 x 71.1 cm)

Gift of the Artist

2004.1153.7

AGOSTO (August)

Sean Scully

New York/New York/United States

2003

Frederico García Lorca poetry from "De Canciones 1921-1924" (from "Songs 1921-1924") left. 7 of 10 from "Etchings for Frederico García Lorca"

color aquatint, sugarlift, and spitbite

platemark 6 15/16 x 8 15/16 in. (17.7 x 22.7 cm) on sheet 18 x 28 1/16 in. (45.7 x 71.3 cm)

Gift of the Artist



James Welling, 5912, 2008, From the Glass House Series, inkjet print, Museum Purchase: Trustee Art Purchase Fund, Carl Jacobs Gift Fund and the Susan and William Friedlander Endowment, 2010.28

# ACCESSIONS

2004.1153.8

COLMENA (Beehive)

Sean Scully

New York/New York/United States

2003

Frederico García Lorca poetry from "De Suites" (from "Suites") left. 8 of 10 from "Etchings for Frederico García Lorca"

color aquatint, sugarlift, and spitbite

platemark 8 15/16 x 7 in. (22.7 x 17.8 cm) on sheet 18 x 28 in. (45.7 x 71.1 cm)

Gift of the Artist

2004.1153.9

CANTO (Song)

Sean Scully

New York/New York/United States

2003

Frederico García Lorca poetry from "De Canciones 1921-1924" (from "Songs 1921-1924") left. 9 of 10 from "Etchings for Frederico García Lorca"

color aquatint, sugarlift, and spitbite

platemark 6 15/16 x 8 15/16 in. (17.6 x 22.7 cm) on sheet 18 x 28 in. (45.7 x 71.1 cm)

Gift of the Artist

2004.1153.10

EL DIAMANTE (Diamond)

Sean Scully

New York/New York/United States

2003

Frederico García Lorca poetry from "De Libro de poemas" (from "Book of Poems") left. 10 of 10 from "Etchings from Frederico García Lorca"

color aquatint, sugarlift, and spitbite

platemark 8 7/8 x 7 in. (22.5 x 17.8 cm) on sheet 18 x 28 in. (45.7 x 71.1 cm)

Gift of the Artist

2004.1154

FLOOD GAUGE STRUCTURE ON THE RIO GRANDE, PRESIDIO, TX 1999 (STUDY FOR PART 2 OF WATER-FLOW MONITORING INSTALLATIONS ON THE RIO GRANDE RIVER NEAR PRESIDIO, TX)

Rackstraw Downes

2002-2003

Landscape with mountain in background, flat land in center and vertical measuring devices in foreground

charcoal

sheet 18 1/8 x 25 15/16 in. (46 x 65.9 cm)

The Edwin and Virginia Irwin Memorial

# ACCESSIONS

2004.1155

CHICAGO

John E. Dowell

2003

Photo image of Chicago River in centeroverlaid with swirls and marks in green, gray and magenta  
color photo lithograph  
image 17 1/16 x 20 1/16 in. (43.3 x 51 cm) on sheet 22 7/16 x 22 1/16 in. (57 x 56 cm)

The Albert P. Strietmann Collection

2005.25

WASHINGTON IN 1772

James W. Steel, Anson Dickinson

1830

Half length portrait of male in Revolutionary War Uniform. Print after Cincinnati Art Museum miniature 2004.236  
steel engraving  
image 5 9/16 x 4 7/16 in. (14.2 x 11.3 cm) on sheet 8 9/16 x 5 1/2 in. (21.8 x 14 cm)

Gift of Mr. and Mrs. Charles Fleischmann III

2005.715

PRESSED IRON BLOSSOM NO. 1

Willie Cole

2005

Flower blossom from 5 iron patterns  
color lithograph  
sheet 24 1/16 x 36 in. (61.1 x 91.5 cm)

Museum Purchase with funds provided by Leo H. Munick, M.D.

2005.716

UNTITLED

Margaret Wenstrup

Circa 1953

Black and white triangles in repetitive pattern giving wavy appearance  
pen and black ink, white out  
image 19 x 24 15/16 in. (48.2 x 63.3 cm) on sheet 23 1/16 x 29 in. (58.6 x 73.7 cm)

Gift of the Artist

2005.717

UNTITLED

Margaret Wenstrup

Circa 1951

Black and white triangles in a pattern  
pen and black ink, white out  
image 24 15/16 x 19 in. (63.4 x 48.3 cm) on sheet 29 x 23 1/16 in. (73.7 x 58.6 cm)

The Albert P. Strietmann Collection



# ACCESSIONS

2005.718

UNTITLED

Margaret Wenstrup

1958

Abstract woodcut with wood grain and geometric shapes; 3 shades of black

woodcut

18 15/16 x 22 in. (48.1 x 55.9 cm)

The Albert P. Strietmann Collection

2005.719

UNTITLED

Margaret Wenstrup

1958

Abstract color woodcut with woodgrain and geometric shapes; blue, red, and black

color woodcut

image 22 15/16 x 19 in. (58.2 x 48.2 cm) on sheet 26 7/8 x 23 1/16 in.

(68.3 x 58.6 cm)

The Albert P. Strietmann Collection

2005.720

UNTITLED

Margaret Wenstrup

1958

Abstract color woodcut with woodgrain and geometric shapes; black, grey, red, yellow and green

color woodcut

image 22 1/8 x 19 1/16 in. (56.2 x 48.4 cm) on sheet 27 x 23 7/16 in.

(68.6 x 59.5 cm)

The Albert P. Strietmann Collection

2005.721

UNTITLED

Margaret Wenstrup

1958

Abstract color woodcut with wood grain and geometrical shapes; black, yellow and green

color woodcut

image 22 1/16 x 19 5/16 in. (56 x 49.1 cm) on sheet 25 1/2 x 23 1/8 in.

(64.7 x 58.7 cm)

The Albert P. Strietmann Collection

# ACCESSIONS

2005.722

BUDDHA SAKYAMUNI

Thailand

8th Century-9th Century

Bronze figure of Buddha Sakyamuni, standing in frontal pose, in a transparent ankle-length robe, with hands raised in a double gesture of explanation

cast bronze

9 in. (22.9 cm)

Gift of Mark and Iuliana Phillips

2005.723

HEAD OF ASCETIC

Gandhara/India

2nd Century AD-4th Century AD

Terracotta head of a bearded ascetic, with long wavy hair falling onto a slightly creased brow; surviving traces of pigment remain on the face and hair; insertion hole at base of neck

terracotta, with traces of pigment

6 in. (15.2 cm)

Gift of Michael Phillips and Juliana Maio

2006.157

NIGHT SKY 2005

Vija Celmins

New York/New York/United States

2005

Night sky

screen print

image 20 1/4 x 25 3/4 in. (51.4 x 65.4 cm) on sheet 26 9/16 x 31 15/16 in. (67.4 x 81.1 cm)

Museum Purchase: The Albert P. Strietmann Collection; Prints, Drawings, and Photographs Funds; The Susan and William Friedlander Endowment Fund; Alice and Harris Weston Gift Fund

2006.158

YEAR OF THE TIGER

C. F. Payne

Cincinnati/Ohio/United States

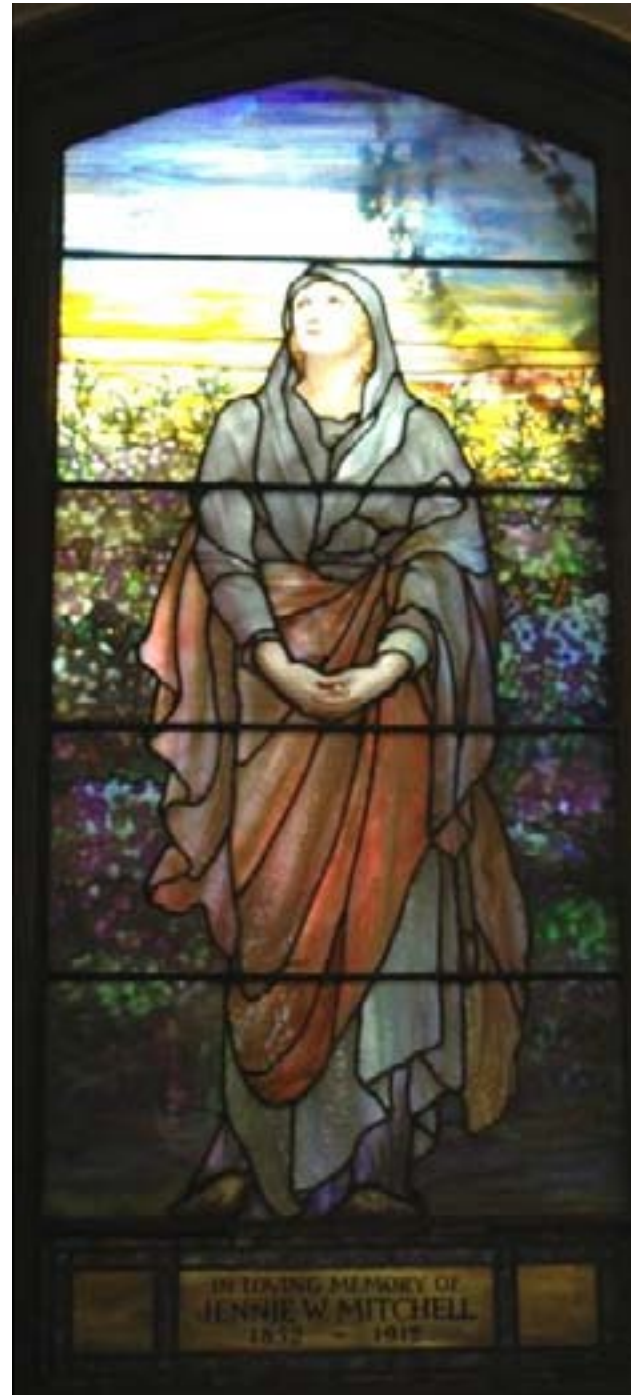
2005

Tiger inspired by Chinese 15th century hanging scroll by Xu Gui (1964.703). Commissioned by the Cincinnati Art Museum in honor of the Cincinnati Bengals. Tiger with stadium and Cincinnati Skyline in left background

watercolor, acrylic, oil, and colored pencil

image 24 1/8 x 13 1/8 in. (61.2 x 33.3 cm) on mount 30 1/16 x 19 13/16 in. (76.3 x 50.4 cm)

Print, Drawing, and Photograph Gift Fund



(right) Jennie W. Mitchell, *RESURRECTION ANGEL*, 1852-1912, Museum Purchase: Oliver Family Foundation, made possible in part by the Episcopal Diocese of Southern Ohio

(far right) Robert Mitchell, *CHRIST*, 1811-1899, Museum Purchase: The Gardner Family 1992 Charitable Lead Trust, made possible in part by the Episcopal Diocese of Southern Ohio



# ACCESSIONS

2007.168

CHILD'S CUP

Duhme & Co.

Cincinnati/Ohio/United States

Circa 1865

Straight-sided cup with tri-partite applied band at rim and base; stamped foliate decoration around two applied medallions with unidentified female head at mid-section of sides; hollow applied C-shaped handle

silver

H. 3 in. (7.6 cm), W. with handle 3 7/8 in. (9.8 cm)

Gift of James Randolph Hillard, M.D. and Aingeal Grehan

2007.169

CHILD'S CUP

Duhme & Co.

Cincinnati/Ohio/United States

Circa 1875

Straight-sided cup with tripartite applied band on rolled lip and banded base with beading; Aesthetic Anglo-Japanesque engraving with geometric diagonal banding and floral motif; hollow applied C-shaped handle.

silver

H. 3 1/8 in. (7.9 cm); W.(with handle) 4 1/8 in. (10.5 cm)

Gift of James Randolph Hillard, M.D. and Aingeal Grehan

2007.170

CUP

Duhme & Co.

Cincinnati/Ohio/United States

Circa 1875

Urn-shaped cup with stamped band of repeating heart-shaped motif around rim; stamped band with stylized leaves over an engraved band with four half-circles and pendants at midsection; applied two-part wire handle encapsulating a floral medallion; circular pedestal foot and gilt interior

silver, parcel gilt

H. with handle 4 3/8 in. (11.1 cm), W. with handle 4 1/8 in. (10.5 cm)

Gift of James Randolph Hillard, M.D. and Aingeal Grehan

2007.171

CHILD'S CUP

Duhme & Co.

Cincinnati/Ohio/United States

Circa 1875

Straight-sided cup with Aesthetic-style engraved bands around top and base; applied belt with buckle engraved with vine and leaves around midsection; hollow applied angular handle

silver

H. 3 3/4 in. (9.5 cm), W. with handle 4 1/8 in. (10.5 cm)

Gift of James Randolph Hillard, M.D. and Aingeal Grehan

# ACCESSIONS

2007.172

CUP

Duhme & Co.

Cincinnati/Ohio/United States

Circa 1865

Straight-sided cup with gilt interior, flaring rim, circular pedestal foot, and angular handle with scrolled terminals; band of brite-cut engraved vine and leaves around rim; row of beading at neck and waist; cartouche with inscription surrounded by florid scroll and leaf motif on side opposite handle  
silver, parcel gilt

H. with handle 4 3/8 in. (11.1 cm), W. with handle 4 5/8 in. (11.7 cm)

Gift of James Randolph Hillard, M.D. and Aingeal Grehan

2007.173

CUP

Duhme & Co.

Cincinnati/Ohio/United States

Circa 1870

Cup with lobed baluster-shaped body, gilt interior and conforming circular foot; tripartite band at flared lip and base; rococo double C-scroll applied handle with thumb rest  
silver, parcel gilt

H. with handle 3 in. (7.6 cm), W. with handle 4 5/8 in. (11.7 cm)

Gift of James Randolph Hillard, M.D. and Aingeal Grehan

2007.174

CUP

Duhme & Co.

Cincinnati/Ohio/United States

Circa 1880

Gilt cup with baluster-shaped paneled body and C-shaped applied handle; stamped applied band with Japanesque-style decoration at top; scalloped motif below applied band and at base; six diamond-shaped panels containing different floral and foliage motifs around waist surrounded by pentagonal panels with hammered surface  
silver, parcel gilt

H. 3 5/8 in. (9.2 cm), W. with handle 4 5/8 in. (11.7 cm)

Gift of James Randolph Hillard, M.D. and Aingeal Grehan

2007.175

GOBLET

Duhme & Co.

Cincinnati/Ohio/United States

Circa 1882

Goblet with ovoid bowl, gilt interior, balluster stem and stepped circular foot; rolled lip above beaded band; engraved Aesthetic-style floral motifs framed by V-shaped geometric banding separating the inscriptions on sides of bowl; engraved Aesthetic-style borders circle knob of stem and top of foot  
silver, parcel gilt

H. 6 1/2 in. (16.5 cm), W. (at top) 3 1/4 in. (8.3 cm)

Gift of James Randolph Hillard, M.D. and Aingeal Grehan

# ACCESSIONS

2007.176

GOBLET

Duhme & Co.

Cincinnati/Ohio/United States

Circa 1870

Goblet with tapered straight-sided bowl, rolled lip, knob stem and circular stepped foot; applied beading at lip and edge of foot; engine-turned ribbon band over repeating Aesthetic-style engraved heart-shaped motif enclosing stylized bellflower and foliage pendants  
silver

H. 5 5/8 in. (14.3 cm), W. (at top) 2 3/4 in. (7 cm)

Gift of James Randolph Hillard, M.D. and Aingeal Grehan

2007.177

GOBLET

Duhme & Co.

Cincinnati/Ohio/United States

Circa 1870

Goblet with straight-sided tapered bowl, rolled lip, balluster stem and stepped circular foot; beaded bands at lip and foot; four repeats of a simple repousse design of C-scrolls and foliage around mid-section of bowl  
silver

H. 6 1/4 in. (15.9 cm), W. (at top) x 3 1/4 in. (8.3 cm)

Gift of James Randolph Hillard, M.D. and Aingeal Grehan

2007.178a-d

SET OF GOBLETS (4)

Duhme & Co.

Cincinnati/Ohio/United States

Circa 1880

Set of four goblets with trumpet-shaped bowl, knob stem and circular foot; engine-turned ribbon band with repeating engraved bellflower and foliage pendants alternating with diamond-shaped drops around top of bowl  
silver, parcel gilt

H. 5 1/2 in. (14 cm), W. (at top) 2 1/2 in. (6.4 cm)

Gift of James Randolph Hillard, M.D. and Aingeal Grehan

2007.179

GOBLET

Duhme & Co.

Cincinnati/Ohio/United States

Circa 1865

Goblet with ovoid bowl, round stem and circular stepped foot; applied tri-partite band at lip and applied stamped band with repeating heart-shaped motif around foot; repousse floral and foliage design surrounding heart-shaped cartouche at mid-section of bowl  
silver

H. 6 1/4 in. (15.9 cm), W. (max.) 3 5/8 in. (9.2 cm)

Gift of James Randolph Hillard, M.D. and Aingeal Grehan

# ACCESSIONS

2007.180

GOBLET

Duhme & Co.

Cincinnati/Ohio/United States

Circa 1880

Goblet with flaring bowl, gilt interior, balluster stem and circular stepped foot; applied brite-cut bands with floral and foliage motif below lip, at base of bowl and foot; applied beaded bands at lip and below and above stamped band at base of bowl and top of foot

silver, parcel gilt

H. 6 7/8 in. (17.5 cm), W. max. 3 3/8 in. (8.6 cm)

Gift of James Randolph Hillard, M.D. and Aingeal Grehan

2007.181

CUP

Duhme & Co.

Cincinnati/Ohio/United States

Late 19th Century

Cup with bulbous-shaped body, flared rim with applied beaded band; three applied triple C-scroll handles; engraved monogram at midsection of side

silver

H. with handles 3 in. (7.6 cm); W. with handles 4 in. (10.2 cm)

Gift of James Randolph Hillard, M.D. and Aingeal Grehan

2007.182

BEAKER

Duhme & Co.

Cincinnati/Ohio/United States

Late 19th Century

Straight-sided beaker with tripartite applied band at rim and base, engraved monogram at midsection of side

silver

H. 3 7/8 in. (9.8 cm), Diam. 3 1/8 in. (7.9 cm)

Gift of James Randolph Hillard, M.D. and Aingeal Grehan

2007.183

GOBLET

Duhme & Co.

Cincinnati/Ohio/United States

Circa 1865

Goblet with ovoid bowl, rolled lip, balluster stem and stepped circular foot; applied beaded bands at lip and foot; simple repousse floral and foliage design surrounding oval cartouche at mid-section of bowl

silver

H. 7 3/8 in. (18.7 cm), W. max. 3 3/8 in. (8.6 cm)

Gift of James Randolph Hillard, M.D. and Aingeal Grehan



Roy Lichtenstein, *APPLE ON PLATE*, 1982, oil on canvas,  
Bequest of Mr. and Mrs. David J. Joseph, Jr., 2010.7



# ACCESSIONS

2007.184

CHILD'S CUP

Beggs & Smith

Cincinnati/Ohio/United States

Circa 1855

Straight-sided cup with rolled lip above beaded band; applied double band with central strip of beading at foot; applied double C-scroll handle

silver

H. with handle 3 1/2 in. (8.9 cm), W.(with handle 3 7/8 in. (9.8 cm)

Gift of James Randolph Hillard, M.D. and Aingeal Grehan

2007.185

CUP

Duhme & Co.

Cincinnati/Ohio/United States

Late 19th Century

Bowl-shaped cup with gilt interior, rolled rim, applied flanged base; stamped strap handle with repousse-style floral motif; engraved inscription at midsection of side

silver, parcel gilt

H. with handle 2 1/2 in. (6.4 cm), W. with handle 4 7/8 in. (12.4 cm)

Gift of James Randolph Hillard, M.D. and Aingeal Grehan

2007.186

LOVING CUP

Duhme & Co.

Cincinnati/Ohio/United States

Late 19th Century

Loving cup with bell-shaped body; applied beaded band below flaring folded rim; applied stepped pedestal foot with beaded band at top of first step; three applied C-scroll handles; engraved inscription at midsection of side

silver

H. with handles 10 1/4 in. (26 cm), W. with handles 9 7/8 in. (25.1 cm)

Gift of James Randolph Hillard, M.D. and Aingeal Grehan

2007.187

LOVING CUP

Unidentified Maker, Duhme & Co.

Cincinnati/Ohio/United States

1900

Loving cup with urn-shaped body; applied stamped band with egg and dart motif below folded rim; applied trumpet-shaped pedestal foot with applied band stamped with egg and dart motif around base; three horn handles attached by silver sockets; engraved inscriptions at midsection of two sides between handles

silver

H. 13 5/8 in. (34.6 cm), W. with handles 9 in. (22.9 cm)

Gift of James Randolph Hillard, M.D. and Aingeal Grehan

# ACCESSIONS

2007.188

FOOTED BOWL

Duhme & Co.

Cincinnati/Ohio/United States

Late 19th Century

Oval footed bowl with gilt interior on conforming pedestal foot; applied stamped band with foliage motif around flaring everted rim; engraved oval cartouche with floral and geometric motif in center of interior

silver, parcel gift

H. 3 5/8 in. (9.2 cm), W. 9 3/4 in. (24.8 cm)

Gift of James Randolph Hillard, M.D. and Aingeal Grehan

2007.189

SALVER

Duhme & Co.

Cincinnati/Ohio/United States

Late 19th Century

Square salver on four cast and applied animal paw feet; stamped repousse floral and foliage motif on a stippled background around rim; applied stamped band with repeating foliage motif around outer edge of rim; interior engraved with geometric decoration around circular cartouche

silver

H. 5/8 in. (1.6 cm), W. 8 in. (20.3 cm)

Gift of James Randolph Hillard, M.D. and Aingeal Grehan

2007.190a-b

CREAMER AND SUGAR

Duhme & Co.

Cincinnati/Ohio/United States

Late 19th Century

Creamer with bulbous hammered body with repousse floral and foliate decoration above and below repeating scroll motif at midsection, applied double C-scroll handle, four applied ball feet, and flaring ruffled rim. Sugar with bulbous hammered body with repousse floral and foliate decoration above and below repeating scroll motif at midsection, two applied double C-scroll handles, four applied ball feet, and flaring ruffled rim

silver

creamer: H. with handle 3 5/8 in. (9.2 cm), W. with handle 5 1/8 in. (13 cm); sugar: H. with handles 3 5/8 in. (9.2 cm), W. with handles 6 5/8 in. (16.8 cm)

Gift of James Randolph Hillard, M.D. and Aingeal Grehan

# ACCESSIONS

2007.191a-b

CREAMER AND SUGAR

Duhme & Co.

Cincinnati/Ohio/United States

Late 19th Century

Baluster-shaped creamer with flaring rim and lip, vertical reeded body and applied double C-scroll handle. Sugar with Baluster-shaped sugar with flaring rim, vertical reeded body and applied double C-scroll handles

silver

creamer: H. with handle 3 3/4 in. (9.5 cm), W. with spout and handle 4 3/4 in. (12.1 cm); sugar: H. with handles 3 3/4 in. (9.5 cm), W. with handles 7 in. (17.8 cm)

Gift of James Randolph Hillard, M.D. and Aingeal Grehan

2007.192a-b

CREAMER AND SUGAR

Duhme & Co.

Cincinnati/Ohio/United States

Late 19th Century

Bowl-shaped creamer with gilt interior, applied band stamped with foliage motif around rim, and applied handle. Bowl-shaped sugar with gilt interior, applied band with stamped foliage motif around rim and applied handles

silver

creamer: H. with handle 2 1/2 in. (6.4 cm), W. with spout and handle 5 1/2 in. (14 cm); sugar: H. with handles 2 1/2 in. (6.4 cm), W. with handles 6 in. (15.2 cm)

Gift of James Randolph Hillard, M.D. and Aingeal Grehan

2007.193

FUNNEL

Duhme & Co.

Cincinnati/Ohio/United States

Late 19th Century

Bowl-shaped funnel with rope border at rim; applied double c-scroll handle

silver

H. 4 1/2 in. (11.4 cm), W. with handle 4 7/8 in. (12.4 cm)

Gift of James Randolph Hillard, M.D. and Aingeal Grehan

2007.194

PITCHER

E & D Kinsey

Cincinnati/Ohio/United States

Circa 1856

Round ewer-shaped pitcher with rolled lip on conforming round, stepped foot with beading; applied cast double C-scroll handle with thumb rest

silver

H. with handle 8 3/8 in. (21.3 cm), W. with handle and lip 5 7/8 in. (14.9 cm)

Gift of James Randolph Hillard, M.D. and Aingeal Grehan

# ACCESSIONS

2007.195

TEAPOT

E & D Kinsey

Cincinnati/Ohio/United States

1844-1861

Teapot with rococo-revival chased and repousse foliate and floral decoration on bulbous body; applied cast spout and C-scroll handle with grape vine, foliage and grapes; hinged lid with cast grape and leaf finial; applied open-work foot ring with four feet silver

H. with finial 9 1/8 in. (23.2 cm), W. with handle and spout 10 1/2 in. (26.7 cm)

Gift of James Randolph Hillard, M.D. and Aingeal Grehan

2007.196

FLASK

Duhme & Co.

Cincinnati/Ohio/United States

Late 19th Century

Irregularly-shaped flask with diagonal bands of repousse floral and foliage decoration on both sides; attached, hinged lid with repousse flower head

silver

H. including cap 7 7/8 in. (20 cm), W. max. 5 in. (12.7 cm), D. 1 1/4 in. (3.2 cm)

Gift of James Randolph Hillard, M.D. and Aingeal Grehan

2007.197a-b

PAIR OF CANDLESTICKS

Duhme & Co.

Cincinnati/Ohio/United States

Circa 1900

Pair of candlesticks with columnar shafts; flaring, stepped bobeches with engraved florets and beading below; stepped foot with beading silver

a: H. 7 3/8 in. (18.7 cm), Diam. base 3 7/8 in. (9.8 cm); b: H. 7 1/4 in. (18.4 cm), Diam. base 3 7/8 in. (9.8 cm)

Gift of James Randolph Hillard, M.D. and Aingeal Grehan

2007.198

PITCHER

Duhme & Co.

Cincinnati/Ohio/United States

Circa 1877

Baluster-shaped body with engraved foliate and floral decoration forming a cartouche surrounding engraved inscription (Kebler / 1877) on side under flaring lip with rolled rim; engraved foliate and floral decoration around neck; applied C-scroll handle with thumb rest; stepped circular foot

silver

H. with handle 10 7/8 in. (27.6 cm), W. with handle and lip 8 in. (20.3 cm)

Gift of James Randolph Hillard, M.D. and Aingeal Grehan

Augustus Saint-Gaudens, *THE PURITAN*, 1883-1886  
Museum Purchase with funds provided by an Anonymous Donor.



# ACCESSIONS

2007.199

COMPOTE

Duhme & Co.

Cincinnati/Ohio/United States

Late 19th Century

Double handled bowl on circular pedestal foot with knob stem; stamped design of leaves on band on rim of bowl; band with beaded edges and repeating engraved Anthemion motif on pedestal foot; applied handles surmounted by cast pheasants  
silver

H. 10 1/4 in. (26 cm), W. with handles 13 7/8 in. (35.2 cm)

Gift of James Randolph Hillard, M.D. and Aingeal Grehan

2007.200

BOWL

Duhme & Co.

Cincinnati/Ohio/United States

Late 19th Century

Shallow bowl with flaring foot rim; applied band with stamped geometric motif around exterior under rolled rim; interior engraved with aesthetic movement/Japanesque decoration of foliage and a bird  
silver

H. 1 1/2 in. (3.8 cm), Diam. 5 1/8 in. (13 cm)

Gift of James Randolph Hillard, M.D. and Aingeal Grehan

2007.201

VANITY BOX

Duhme & Co.

Cincinnati/Ohio/United States

Late 19th Century

Bulbous box with repousse c-scroll, floral and foliage decoration continuous around sides; lid with repousse c-scroll, floral and foliage decoration forming a cartouche around an engraved monogram  
silver

H. 2 7/8 in. (7.3 cm), Diam. 3 1/2 in. (8.9 cm)

Gift of James Randolph Hillard, M.D. and Aingeal Grehan

2007.230

SKYPHOS WITH IVY LEAF DECORATION

Roman Empire

1st Century BC-1st Century AD

Two-handled cup with low splayed foot and ribbed vertical handles, the exterior molded in relief with a stylized band of ivy leaf  
unglazed earthenware with molded (applique) relief decoration,  
arretine ware

H. 2 9/16 in. (6.5 cm), W. with handles 6 1/8 in. (15.5 cm), Diam. 4 1/8 in. (10.5 cm)

Gift of Carol and Theodore Striker

# ACCESSIONS

2007.231

MUSSEL GATHERERS

Frank Duveneck

Early 1880s

2 females carrying baskets walking beach

monotype in brown

platemark 12 7/16 x 17 1/16 in. (31.6 x 43.4 cm) on sheet 14 x 19 1/2 in. (35.5 x 49.6 cm)

Gift of Diane and Vicki Zodikoff in memory of Rudolph and Dolores Zodikoff

2007.232

FICCIONES

Sol LeWitt

1984

Book with 22 screen prints. Binding: black textured paper binding, (binder: A. Horowitz & Sons)

screen print

binding 8 5/16 x 8 1/4 x 1 3/4 in. (21.1 x 21 x 4.4 cm)

Gift of Kimberly Klosterman and Michael Lowe

2008.102

UNTITLED

Mark Bradford

2003

Abstract

color lithograph

sheet 32 5/8 x 32 11/16 in. (82.8 x 83 cm)

The Albert P. Strietmann Collection

2008.103

SIT DOWN AND LOOK

Margaret Wenstrup

New Richmond/Ohio/United States

2006

Black and white strips of canvas with purposely frayed edges woven to create multiple vectors, illusions and actual depth

acrylic on woven canvas strips mounted to plywood

38 x 50 in. (96.5 x 127 cm)

Gift of Jim and Lynne Browne in memory of Dick and Maggie Wenstrup, our friends and mentors

# ACCESSIONS

2008.104

THE WILLARD FAMILY (FRANCES ADELINE WHITMAN WILLARD, FRANCES ADELINE WILLARD, HENRY HASKELL WILLARD JR., AND HENRY HASKELL WILLARD SR., IN MINIATURE PORTRAIT)

The Borden Limner

United States

1837

A woman, at left, is seated with two children on a red sofa. A dark green drape is in the left background and a fluted column and landscape in the right. The woman has brown hair pinned up with ringlets around her face. She wears a black dress with a wide neckline and narrow waist. Her sleeves are puffed to the elbow then tight from the elbow to the wrist. She wears earrings, and a large cross on a chain around her neck; and she holds a miniature portrait of a man in a locket on a chain in her hand. The child at the center is blonde and wears a coral necklace and a peach-toned dress printed with orange flowers and trimmed with white fur (?) over lacy pantalettes. She stands on the sofa and holds a toy horse in her hand. A red-haired boy sits to the right, with one leg crossed beneath him on a gold cushion atop the sofa. He wears a black coat over white trousers and holds the reins of the toy horse in one hand

oil on canvas

42 3/16 x 54 1/16 in. (107.1 x 137.3 cm)

The Edwin and Virginia Irwin Memorial

2008.105

CHAUNCEY AND LUCY GILES

American School

United States

Circa 1853

A young girl, wearing a pink dress, reads to a small boy in white. Next to the boy is a straw hat with a blue ribbon and a posy of flowers. The children are sitting in a wooded landscape with a river and buildings visible through the trees in the upper left corner of the painting  
oil on canvas

painting 27 x 33 1/4 in. (68.6 x 84.5 cm); frame 33 1/4 x 38 1/8 in. (84.5 x 96.8 cm)

Bequest of Helen Mattern



# ACCESSIONS

2008.106a-e

WEDDING DRESS/EVENING DRESS, JACKET AND BELT

J.M. Gidding & Co.

Cincinnati/Ohio/United States

1935

Yellow satin evening dress worn as wedding dress with matching jacket and belt; a. Dress: V neckline; shoulders are covered with self fabric that forms a semi-capelet; bodice fabric is gathered below breast; bodice back is formed from two shapes of fabric that converge at center back neckline with peek-a-boo reveal at center back; high V-shaped waistline; bias-cut full length skirt with pleated gores inset at back; center back button closure; b. Jacket: turned down collar with lapels; 3/4 length butterfly sleeves; jacket blouses but fits at waist; center front button closure; c. Belt: self fabric belt with covered buckle; trimmed with rows of topstitching

silk

Gift of Sue Ann Schuler Painter and Karen Schuler Lybrook in memory of their mother, Ann Eaton Schuler

2008.107

WEDDING DRESS

Paco Rabanne

France

1967-1968

Full length wedding dress of linked rectangles of white leather embellished with beaten aluminum strips; square neckline; sleeveless with side shoulder straps; center back clasp closure

leather, aluminum

Museum Purchase: Lawrence Archer Wachs Trust

2009.56

ASHES TO ASHES, DIAMONDS TO DIAMONDS, DUST TO DUST

Barbara Bloom

1990

4 images surrounded by a decorative image frame

color offset lithograph

image 38 1/2 x 26 3/4 in. (97.8 x 68 cm) on sheet 39 5/16 x 27 9/16 in. (99.8 x 70 cm)

Gift of Carl and Elizabeth Solway in memory of Joe Cockerill

2009.57

CORTEX

Boyd Webb

London/England/United Kingdom

1990

Zebras in configuration on stand

color screen print

image 24 15/16 x 34 15/16 in. (63.3 x 88.7 cm) on sheet 27 7/16 x 39 7/16 in. (69.7 x 100.2 cm)

Gift of Carl and Elizabeth Solway in memory of Judith Hanenson

2009.58

WATER TOWER, TOLEDO, OH USA

Bernd Becher, Hilla Becher

1978

black and white photograph, gelatin silver print

24 x 20 in. (61 x 50.8 cm)

The Edwin and Virginia Irwin Memorial



Jean Mignon, Luca Penni, *THE JUDGMENT OF PARIS*, Circa 1544-Circa 1545, Museum Purchase with funds provided by Mr. and Mrs. Charles Fleischmann III, the Oliver Family Foundation and anonymous gift in memory of Helen Pernice

# ACCESSIONS

- 2009.59  
DEAD ANIMALS #001  
Richard Misrach  
1987, 1990  
color photograph/chromogenic print  
30 x 40 in. (76.2 x 101.6 cm)  
Museum Purchase: Carl Jacobs Gift Fund
- 2009.60.1-76  
CONVERSATIONS WITH THE DEAD  
Danny Lyon  
1967-1968, 1981  
Portfolio of 76 gelatin silver prints, each contained in a mylar sleeve  
and bound in a vinyl volume with slipcase  
gelatin silver print  
each approx. 11 3/4 x 8 in. (29.8 x 20.3 cm)  
Museum Purchase: Carl Jacobs Gift Fund
- 2009.61  
THE NEW VORTEX PLUNGES INTO THE HEART OF THE PRESENT  
Kamrooz Aram  
Brooklyn/New York/United States  
2008  
Dark ground canvas with bright areas of green, blue and violet  
including spiral clouds and a green pennant  
oil on canvas  
72 x 108 in. (182.9 x 274.3 cm)  
Museum Purchase: Bequest of Mr. and Mrs. Walter J. Wichgar
- 2009.62  
INSIDE OUT  
Odili Donald Odita  
New York or Philadelphia/United States  
2008  
Horizontal oriented canvas with red, pink, green, and blue jagged  
stripes. Green is at top of canvas. No two colors are the same.  
acrylic on canvas  
24 x 30 in. (61 x 76.2 cm)  
Museum Purchase: John J. Emery Fund
- 2009.63  
IPSE--SELF PORTRAIT HOLDING A CRAYON  
Thomas Frye  
1760  
Frontal half length man wearing wig with hand at head and hand  
holding crayon. Chaloner-Smith 6  
mezzotint  
platemark 19 7/8 x 13 3/4 in. (50.5 x 35 cm) on sheet 20 1/2 x 14 1/2  
in. (52 x 36.9 cm)  
Museum Purchase with funds provided by Mr. and Mrs. Fleischman and  
anonymous gift in memory of Helen Pernice

# ACCESSIONS

- 2009.64  
EVERGLADE KITE  
Charley Harper  
1957  
Right profile kite with snail shell at right  
color screen print  
composition 13 x 18 7/16 in. (33 x 46.9 cm) on sheet 15 1/4 x 20 7/16 in. (38.8 x 51.9 cm)  
Gift of the Estate of Charley Harper
- 2009.65  
GREAT AUK  
Charley Harper  
1957  
Left profile Auk with icebergs in background  
color screen print  
composition 13 1/16 x 18 1/2 in. (33.2 x 47 cm) on sheet 15 1/4 x 20 7/16 in. (38.8 x 51.9 cm)  
Gift of the Estate of Charley Harper
- 2009.66  
HEATH HEN  
Charley Harper  
1957  
Left profile heath hen with sun in background  
color screen print  
composition 12 15/16 x 18 7/16 in. (32.8 x 46.8 cm) on sheet 15 1/4 x 20 1/2 in. (38.8 x 52 cm)  
Gift of the Estate of Charley Harper
- 2009.67  
LADYBUG  
Charley Harper  
1959  
Top view of ladybug crawling right  
color screen print  
composition 12 15/16 x 18 1/2 in. (32.9 x 47 cm) on sheet 15 1/4 x 20 1/2 in. (38.7 x 52 cm)  
Gift of the Estate of Charley harper
- 2009.68  
MANTIS  
Charley Harper  
1960  
Praying mantis and insect  
color screen print  
composition 12 15/16 x 18 1/2 in. (32.9 x 47 cm) on sheet 15 1/4 x 20 1/2 in. (38.7 x 52 cm)  
Gift of the Estate of Charley Harper

# ACCESSIONS

2009.69

HEAD-QUARTERS OF THE POLICE PATROL AND RELIEF BOATS,  
CINCINNATI

Henry François Farny

Mar 03 1883

Street at night with relief boat, supplies and men in foreground  
wood engraving

image 9 1/8 x 13 7/16 in. (23.1 x 34.1 cm) on sheet 10 3/8 x 15 7/8 in.  
(26.4 x 40.3 cm)

Gift of Anita Ellis in honor of Linda Ellis

2009.70

THE FLOOD AT CINCINNATI--SWEPT AWAY

Henry François Farny

Mar 03 1883

People on suspension bridge viewing rooftop of swept-away building  
with man on top

wood engraving

image 10 15/16 x 8 1/2 in. (27.8 x 21.6 cm) on sheet 15 13/16 x 10  
11/16 in. (40.1 x 27.2 cm)

Gift of Anita Ellis in honor of Linda Ellis

2009.71

WOW, HERE MISS PALMYRE IS MAKING THE EXACT SAME POT AS  
YOURS

Honoré Daumier

Paris/France

1855

Couple walking left, window with female decorating pot. Delteil 2647  
lithograph

image 7 x 9 1/2 in. (17.8 x 24.2 cm) on sheet 8 3/4 x 10 11/16 in. (22.2  
x 27.2 cm)

Gift of Anita Ellis in honor of Linda Ellis

2009.72

LEAVES WITH SQUARES

Margaret Wenstrup

New Richmond/Ohio/United States

1955

White ground with black leaf-shaped forms, solid and more detailed,  
over solid planes of color in yellow, red, black and black stripes

oil on canvas

canvas 14 1/8 x 22 1/16 in. (35.9 x 56 cm)

Museum Purchase: Jolson Modern Art Gift Fund

# ACCESSIONS

- 2009.73  
VENETIAN GIRL  
Frank Duveneck  
Circa 1880  
A quarter-turned, bust portrait of a young girl with long black hair. She wears a v-necked white blouse, brown vest, a beaded necklace with three strands, and a red cap or scarf on the crown of her head  
oil on canvas  
18 1/2 x 15 in. (47 x 38.1 cm)  
Gift of Anonymous Donors
- 2009.74  
JOSEPH FEDER  
Henry Mosler  
United States  
1900-1915  
Unfinished portrait of Joseph Feder with brown background. Feder looks toward the left and wears a dark brown suit jacket and tie. In the lower left is an inscription by Henry Mosler dedicating the painting to his daughter Edith  
oil and pencil on canvas  
painting 20 1/8 x 16 in. (51.1 x 40.7 cm); frame 22 1/2 x 18 1/2 x 1 1/4 in. (57.2 x 47 x 3.2 cm)  
Bequest from the Collection of Joseph F. McCrindle
- 2009.75  
PORTRAIT OF EDITH  
Henry Mosler  
Munich/Bavaria/Germany  
Mar 1877  
Bust portrait of Edith Mosler painted when she was seven months old. She has curly dark hair, a chubby face, and dark eyes. Edith wears a white baby smock  
oil on canvas  
painting 10 1/2 x 8 1/2 in. (26.7 x 21.6 cm); frame 12 3/4 x 10 7/8 in. (32.4 x 27.6 cm)  
Bequest from the Collection of Joseph F. McCrindle
- 2009.76a  
ANGEL  
The Rookwood Pottery Company, Louise Abel  
Cincinnati/Ohio/United States  
Circa 1920  
Angel holding stylized palm frond; memorial inscription on base; one of a pair  
glazed earthenware  
70 1/2 x 18 x 12 in. (179.1 x 45.7 x 30.5 cm)  
Gift of the Seventh Presbyterian Church, Cincinnati, Ohio



Robert Rauschenberg, *STAR QUARTERS*, 1971, color photo screen print on both faces of mirror-coated plexiglas, The Edwin and Virginia H. Irwin Memorial, 2009.144a-d

# ACCESSIONS

2009.76b

ANGEL

The Rookwood Pottery Company, Louise Abel

Cincinnati/Ohio/United States

Circa 1920

Angel holding stylized palm frond; memorial inscription on base; one of a pair

glazed earthenware

70 1/2 x 18 x 12 in. (179.1 x 45.7 x 30.5 cm)

Gift of the Seventh Presbyterian Church, Cincinnati, Ohio

2009.77

BOWL

Maria Martinez

Circa 1935

Black-on-black bowl. Highly polished bowl with inward curving rim, bearing a stylized geometric shoulder decoration executed in black-on-black technique

earthenware, with painted and polished decoration

H. 5 3/4 in. (14.6 cm), Diam. 9 1/2 in. (24.1 cm)

Gift of Nancy L. Kewish

2009.79.1-15

HARPER'S PICTORIAL HISTORY OF THE CIVIL WAR (ANNOTATED)

Kara Elizabeth Walker

2005

Portfolio of 15 silhouette screenprints superimposed on photo offset lithographs. In gray cloth-covered hardboard box 41 1/4 x 55 in. Each subject silhouette over enlarged wood engraving

15 photo offset lithographs and screen prints

each approx. 24 x 35 in. (61 x 88.9 cm) on sheet 39 x 52 15/16 in. (99.1 x 134.4 cm)

The Albert P. Strietmann Collection and The Edwin and Virginia Irwin Memorial

2009.79.1

FOOTE'S GUN-BOATS ASCENDING TO ATTACK FORT HENRY

Kara Elizabeth Walker

2005

Right profile figure crawling right inside pyramid shape superimposed on landscape. From series "Harper's Pictorial History of the Civil War (Annotated)"

photo offset lithograph and screen print

image 22 7/16 x 33 1/2 in. (57 x 85.1 cm) on sheet 39 1/16 x 52 15/16 in. (99.2 x 134.4 cm)

The Albert P. Strietmann Collection and The Edwin and Virginia Irwin Memorial



# ACCESSIONS

2009.79.2

ALABAMA LOYALISTS GREETING THE FEDERAL GUN-BOATS

Kara Elizabeth Walker

2005

Left profile of female kneeling superimposed on image of figures welcoming troops. From series "Harper's Pictorial History of the Civil War (Annotated)"

photo offset lithograph and screen print

image 26 5/16 x 34 13/16 in. (66.8 x 88.5 cm) on sheet 38 15/16 x 52 15/16 in. (98.9 x 134.4 cm)

The Albert P. Strietmann Collection and The Edwin and Virginia Irwin Memorial

2009.79.3

SIGNAL STATION, SUMMIT OF MARYLAND HEIGHTS

Kara Elizabeth Walker

2005

Right silhouette of figure walking right superimposed on landscape with hill. From series "Harper's Pictorial History of the Civil War (Annotated)"

photo offset lithograph and screen print

image 34 1/4 x 24 3/4 in. (87 x 62.8 cm) on sheet 52 15/16 x 39 in. (134.4 x 99.1 cm)

The Albert P. Strietmann Collection and The Edwin and Virginia Irwin Memorial

2009.79.4

AN ARMY TRAIN

Kara Elizabeth Walker

2005

Right silhouette of figure with hat, carrying pail superimposed on image of wagon train. From series "Harper's Pictorial History of the Civil War (Annotated)"

photo offset lithograph and screen print

image 26 1/8 x 41 7/16 in. (66.3 x 105.2 cm) on sheet 38 15/16 x 52 13/16 in. (98.9 x 134.2 cm)

The Albert P. Strietmann Collection and The Edwin and Virginia Irwin Memorial

2009.79.5

COTTON HOARDS IN SOUTHERN SWAMP

Kara Elizabeth Walker

2005

3/4 right silhouette of male figure superimposed on image of swamp with men in boat. From series "Harper's Pictorial History of the Civil War (Annotated)"

photo offset lithograph and screen print

image 26 9/16 x 34 1/2 in. (67.5 x 87.6 cm) on sheet 39 x 52 15/16 in. (99.1 x 134.5 cm)

The Albert P. Strietmann Collection and The Edwin and Virginia Irwin Memorial

# ACCESSIONS

2009.79.6

OCCUPATION OF ALEXANDRIA

Kara Elizabeth Walker

2005

2 silhouettes at right superimposed on image of troops marching into city. From series "Harper's Pictorial History fo the Civil War (Annotated)"

photo offset lithograph and screen print

image 24 5/8 x 34 in. (62.5 x 86.4 cm) on sheet 39 x 52 7/8 in. (99.1 x 134.3 cm)

The Albert P. Strietmann Collection and The Edwin and Virginia Irwin Memorial

2009.79.7

BANK'S ARMY LEAVING SIMMSPORT

Kara Elizabeth Walker

2005

Right silhouette of figure dragging bag superimposed on army departing. From series "Harper's Pictorial History of the Civil War (Annotated)"

photo offset lithograph and screen print

image 22 5/16 x 36 9/16 in. (56.6 x 92.9 cm) on 39 1/8 x 52 15/16 in. (99.3 x 134.4 cm)

The Albert P. Strietmann Collection and The Edwin and Virginia Irwin Memorial

2009.79.8

PACK-MULES IN THE MOUNTAINS

Kara Elizabeth Walker

2005

Left silhouette of head with figure with hat superimposed on image of pack mules. From series "Harper's Pictorial History of the Civil War (Annotated)"

photo offset lithograph and screen print

image 33 1/2 x 24 1/2 in. (85.1 x 62.3 cm) on sheet 52 15/16 x 39 in. (134.4 x 99.1 cm)

The Albert P. Strietmann Collection and The Edwin and Virginia Irwin Memorial

2009.79.9

BUZZARD'S ROOST PASS

Kara Elizabeth Walker

2005

Silhouette of head and arm superimposed on image of army moving through pass. From series "Harper's Pictorial History of the Civil War (Annotated)"

photo offset lithograph and screen print

image 42 1/2 x 27 13/16 . (108 x 70.6 cm) on sheet 52 15/16 x 38 7/8 in. (134.5 x 98.7 cm)

The Albert P. Strietmann Collection and The Edwin and Virginia Irwin Memorial

# ACCESSIONS

2009.79.10

LOST MOUNTAIN AT SUNRISE

Kara Elizabeth Walker

2005

Silhouette of monument superimposed on image of troops at sunrise. From series "Harper's Pictorial History of the Civil War (Annotated)" photo offset lithograph and screen print  
image 16 15/16 x 34 5/16 in. (43 x 87.1 cm) on sheet 39 1/16 x 52 15/16 in. (99.2 x 134.5 cm)

The Albert P. Strietmann Collection and The Edwin and Virginia Irwin Memorial

2009.79.11

CREST OF PINE MOUNTAIN WHERE GENERAL POLK FELL

Kara Elizabeth Walker

2005

Silhouette two female figures superimposed on barren landscape. From series "Harper's Pictorial History of the Civil War (Annotated)" photo offset lithograph and screen print  
image 16 5/16 x 34 1/2 in. (41.5 x 87.7 cm) on sheet 39 x 52 15/16 in. (99 x 134.4 cm)

The Albert P. Strietmann Collection and The Edwin and Virginia Irwin Memorial

2009.79.12

SCENE OF McPHERSON'S DEATH

Kara Elizabeth Walker

2005

Frontal full length silhouette, right leg detached, superimposed on wooded landscape. From series "Harper's Pictorial History of the Civil War (Annotated)" photo offset lithograph and screen print  
image 35 1/4 x 31 11/16 in. (89.5 x 80.5 cm) on sheet 52 13/16 x 39 in. (134.2 x 99 cm)

The Albert P. Strietmann Collection and The Edwin and Virginia Irwin Memorial

2009.79.13

DEADBROOK AFTER THE BATTLE OF EZRA'S CHURCH

Kara Elizabeth Walker

2005

Right silhouette of figure superimposed on landscape with stream and fallen figures. From series "Harper's Pictorial History of the Civil War (Annotated)" photo offset lithograph and screen print  
image 26 5/8 x 34 13/16 in. (67.7 x 88.5 cm) on sheet 39 1/16 x 52 15/16 in. (99.2 x 134.4 cm)

The Albert P. Strietmann Collection and The Edwin and Virginia Irwin Memorial

Edouard Vuillard, *Lacing the Ankle Boots (le lacet de la bottine)*, distemper on cardstock, Museum purchase with funds provided by the George Rieveschl Bequest and the John J. Emery Endowment, 08/09.34



# ACCESSIONS

2009.79.14

CONFEDERATE PRISONERS BEING CONDUCTED FROM  
JONESBOROUGH TO ATLANTA

Kara Elizabeth Walker

2005

Right silhouette of male head superimposed on prisoner march. From series "Harper's Pictorial History of the Civil War (Annotated)"

photo offset lithograph and screen print

image 26 15/16 x 33 11/16 in. (68.5 x 85.6 cm) on 39 1/8 x 52 15/16 in. (99.3 x 134.4 cm)

The Albert P. Strietmann Collection and The Edwin and Virginia Irwin Memorial

2009.79.15

EXODUS OF CONFEDERATES FROM ATLANTA

Kara Elizabeth Walker

2005

Silhouette of heads facing opposite superimposed over fleeing figures.

From series "Harper's Pictorial History of the Civil War (Annotated)"

photo offset lithograph and screen print

image 28 1/4 x 33 9/16 in. (71.8 x 85.3 cm) on 39 x 52 7/8 in. (99 x 134.3 cm)

The Albert P. Strietmann Collection and The Edwin and Virginia Irwin Memorial

2009.143a-d

TEA SERVICE

David Kinsey

Cincinnati/Ohio/United States

1861-1874

Three-piece tea service comprised of teapot, lidded sugar bowl, and creamer. All have octagonal, flat panelled, pyriform bodies sitting on circular pedestal feet; stamped band with alternating motif of two varieties of flower heads and leaves at necks, and stamped bands at lips. Teapot and sugar have domed lids with applied bird finials. Scroll handle and spout of teapot have acanthus leaf decoration. Cast angular handles of sugar bowl feature floral and leaf decoration. Creamer has flat, angular, applied handle; unornamented spout silver

teapot: H. with lid 12 in. (30.5 cm), W. from handle to spout 11 1/4 in. (28.6 cm); sugar bowl: H. with lid 10 in. (25.4 cm), W. with handles 8 in. (20.3 cm), D. 6 7/8 in. (17.5 cm); creamer: H. 6 1/2 in. (16.5 cm), W. from handle to spout 9 5/8 in. (24.4 cm), D. 6 1/4 in. (15.9 cm)

Gift of Mr. and Mrs. Charles Fleischmann III

# ACCESSIONS

2009.144a-d

STAR QUARTERS

Robert Rauschenberg

1971

The heavens in four different seasons  
color photo screen print on both faces of mirror-coated plexiglas  
each panel 48 x 48 in. (121.9 x 121.9 cm)  
The Edwin and Virginia H. Irwin Memorial

2009.145

FOUR-FOLD SCREEN: LANDSCAPE

Unkoku Togan

A folding screen in four sections depicting a body of water surrounded  
by mountains with a few small buildings. Three boats occupy the lower  
right corner

ink and color on paper

67 1/2 x 98 13/16 in. (171.5 x 251 cm)

Gift from Mary Reis Sullivan, John T. Reis and Richard D. Reis in  
memory of their mother, Elaine W. Reis

2009.146

MINIATURE BUDDHIST SHRINE

Japan

Late 19th Century

Carved wood and metal with painted with black (exterior) and gold  
(interior) lacquer. Portable shrine with two hinged wings which open  
to reveal seated wooden Buddha inside. The exterior of the shrine is  
painted with black lacquer and the interior with gold lacquer  
wood, gold and black lacquer; metal hinges

3 1/8 x 1 5/8 in. (7.9 x 4.1 cm)

Gift from Mary Reis Sullivan, John T. Reis and Richard D. Reis in  
memory of their mother, Elaine W. Reis

2009.156

#6415

Todd Hido

2007

Landscape photograph executed and printed in color  
chromogenic print

38 x 30 in. (96.5 x 76.2 cm)

Museum Purchase: Carl Jacobs Gift Fund

# ACCESSIONS

2009.157

GRANDFATHER'S BIRTHDAY (La fête de grand-père)

Elizabeth Nourse

Saint Léger-en-Yvelines/France

Circa 1897

3/4 length portrait of two girls, one in headscarf, the other with long brown hair, standing in 3/4 profile as they each hold a wrapped bouquet of flowers. Burke B-70

oil on canvas

31 3/4 x 25 11/16 in. (80.7 x 65.3 cm)

In memory of Mary C. Gores and Guido J. Gores, given by their children

2009.158

BEAKER

Scovil & Co., Pulaski Scovil

Cincinnati/Ohio/United States

1832-1837

Straight-sided beaker with tripartite bands at rim and base  
silver

H. 3 9/16 in. (9 cm), Diam. 3 1/8 in. (7.9 cm)

Museum Purchase: John S. Conner Fund

2009.159

BEAKER

Allen, Rhodes & Co., Caleb Allen, Thomas Rhodes, John Anthony

Cincinnati/Ohio/United States

1834-1837

Straight-sided beaker with double banding at rim and tripartite banding at base, engraved monogram at midsection of side  
silver

H. 3 3/8 in. (8.6 cm), Diam. 3 1/8 in. (7.9 cm)

Museum Purchase: John S. Conner Fund

2009.160a-pp

CHANGING LANDSCAPE

Don Lambert

Cincinnati/Ohio/United States

2003

Hand-drawn, blue and white world map with a white border. Four sections are divided further into smaller movable "puzzles." These areas include (1) North and Central America, (2) Northern Africa and the Middle East (3) South Africa (4) Southeast Asia

latex, graphite and polyurethane on wood

42 units; 156 x 276 x 3.5 inches overall; border units: 10 total, four corner units measuring 75 x 15 x 3.5 in. and six straight units measuring 82 x 15 x 3.5 in.; grid units: 32 total, including 4 smaller wall-mountable grids. Each measures approx 30 x 30 x 3.5 in. (blocks of small grids are 9.25 x 9.25 in. and border is 1 in.)

Museum Purchase: The 4th Floor and Anonymous Gift

# ACCESSIONS

2009.161

ANGEL SWING - A.M.

Anthony Luensman

2009

Pendulum swing

color lithograph

sheet 30 1/8 x 22 7/16 in. (76.5 x 57 cm)

Museum Purchase with funds provided by Tom and Dee Stegman

2009.162

ANGEL SWING - M.A.

Anthony Luensman

2009

Pendulum swing

color lithograph

sheet 30 x 22 1/4 in. (76.2 x 56.5 cm)

Museum Purchase with funds provided by Tom and Dee Stegman

2009.163

GATE GENOA

Frank William Brangwyn

Crown and horse cart in front of city gate

drypoint

platemark 6 15/16 x 5 13/16 in. (17.6 x 14.8 cm) on sheet 12 3/16 x 10 7/8 in. (30.9 x 27.6 cm)

Gift of Ira and Linda Abrahamson in memory of Emma Margaret and Irving Goldman

2009.164

AN OLD HOUSE, DRUMETTAZ CLARAFOND, FRANCE

Philip Harris Giddens

Old two-story farm house

etching

platemark 10 1/4 x 13 1/8 in. (26.1 x 33.4 cm) on sheet 14 1/8 x 19 in. (35.9 x 48.3 cm)

Gift of Ira and Linda Abrahamson in memory of Emma Margaret and Irving Goldman

2009.165a-c

WEDDING DRESS JAPONESQUE

Claudy Jongstra, Arlette Muschter

The Netherlands

2000

Wedding dress, train and obi of off-white hand-felted cloth composed of Merino wool, raw silk, cotton gauze, silk organza, raw cashmere, and raw linen colored with natural vegetable dyes and embellished with a hand-felted image of a Phoenix in brown, black, yellow and red; a. Dress: halter style bodice with white satin ribbon shoulder straps; trained A-line skirt; center back hook and eye closure; b. Train: triangular train with colorful felted image of phoenix in flight; attaches to dress at center back with snaps; c. Obi: straight piece of double thickness felt embellished with felted image of intertwined phoenix tail feathers; interlocking tabs at center back held in place when worn by two large silver metal safety pins

wool, silk, cotton, cashmere, linen

Museum Purchase: Lawrence Archer Wachs Trust





Edward Burtynsky, *SILVER LAKE OPERATIONS, #14 [LAKE LEFROY, WESTERN AUSTRALIA]*, 2008, chromogenic print, Museum Purchase: On to the Second Century, 2010.27

# ACCESSIONS

2009.166

FEMALE FIGURINE

Greece

600 BC-550 BC

Figurine of standing female, with flat body and outstretched triangular projection for arms, with 'mouse-face' on an elongated neck equipped with a pomegranate necklace. Her head, framed by shoulder-length hair, is adorned with a polos headdress with projecting volute. The handmade figure wears a robe adorned with vertical squiggly strands in red paint; the figure stands on a gently flaring base, representing the hem of the robe

terracotta, handmade, with red pigment

H. 7 1/2 in. (19.1 cm), W. with arms 3 1/2 in. (8.9 cm)

Gift of Charles Fleischmann in memory of Julius Fleischmann

2009.167

FIGURINE OF STANDING PIG

Greece

Late 6th Century BC-Early 5th Century BC

Terracotta mold-made figurine of a standing pig, with traces of white slip that originally encompassed the body

terracotta, mold-made, with traces of white slip

H. 2 1/4 in. (5.7 cm), L. 3 1/2 in. (8.9 cm)

Gift of Charles Fleischmann in memory of Julius Fleischmann

2009.168

UNGUENT VESSEL IN FORM OF RECUMBENT RAM

Greece

Late 6th Century BC-Early 5th Century BC

terracotta unguent vessel in shape of recumbent ram; circular spout above head. The body of the vessel is handmade, with spiraling handmade horns separately attached

terracotta, mold-made, with traces of white slip

H. 2 1/4 in. (5.7 cm), L. 3 1/2 in. (8.9 cm)

Gift of Charles Fleischmann in memory of Julius Fleischmann

2010.1

PORTRAIT OF MARIE ANTOINETTE

Jean-François Janinet, Jean-Baptiste-André Gautier-Dagoty

1777

Half length female in formal 18th century French court dress. Portalis and Béraldi 2:132; Inventaire 18e siècle 12:29, no. 56

color etching and engraving printed on two sheets

oval 9 15/16 x 8 1/16 in. (25.2 x 20.5 cm) on sheet 13 13/16 x 9 7/8 in.

(35.1 x 25.1 cm); printed frame 15 15/16 x 12 1/2 in. (40.5 x 31.8 cm)

on sheet 16 1/8 x 12 1/2 in. (41 x 31.8 cm)

Museum Purchase with funds provided by the Fleischmann Foundation

# ACCESSIONS

2010.2

UNTITLED

Walker Evans

1973-1974

Color Polaroid® photograph; abstract image of sign lettering  
color Polaroid photograph

4 x 3 in. (10.2 x 7.6 cm)

Trustee Art Purchase Fund

2010.3

UNTITLED

Walker Evans

1973-1974

Color Polaroid® photograph; abstract image of sign lettering  
color Polaroid photograph

4 x 3 in. (10.2 x 7.6 cm)

Trustee Art Purchase Fund

2010.4

UNTITLED

Walker Evans

1973-1974

Color Polaroid® photograph; abstract image of sign lettering  
color Polaroid photograph

4 x 3 in. (10.2 x 7.6 cm)

Trustee Art Purchase Fund

2010.5

908-02 ABSTRACT PAINTING

Gerhard Richter

2009

Abstract image created with squeegee, palette knife and end of  
brush (handle); paint is applied in thick layers, revealing and skimming  
over the ones below for thick, layered effect; earthy brown and red  
pigments are used on top layers, while middle layer is predominantly  
yellow, horizontal markings from pallet knife made in white and blue  
cut across canvas

oil on wood

19 5/8 x 27 1/2 in. (49.8 x 69.9 cm)

Museum Purchase: John J. Emery Endowment, Fanny Bryce Lehmer  
Endowment and Bequest of Mr. and Mrs. Walter J. Wichgar

2010.6

CIRRUS

Zaha Hadid, Associated Fabrication, LLC

London/England/United Kingdom, Brooklyn/New York/United States

2008

Large sculptural form made from conjoined, contoured sheets of black  
polished laminate; undulating form anchors to wall with two principal  
appendages that extend outward onto the floor

Formica® Laminate, black (909-09) with polished finish, and stained  
medium density fiberboard

96 x 96 x 96 in. (243.8 x 243.8 x 243.8 cm)

Gift of Lois and Richard Rosenthal

# ACCESSIONS

2010.7

APPLE ON PLATE

Roy Lichtenstein

1982

In stylized image of brush marks, an image of single apples, filled with marks of red and a small area of yellow, sits on a small plate highlighted on the left edge with a gray brush mark. The background, in which a table surface is denoted by horizontal lines at the mid-point on the canvas, is filled with more stylized brush marks of dark blue and brown

oil on canvas

36 x 48 in. (91.4 x 121.9 cm)

Bequest of Mr. and Mrs. David J. Joseph, Jr.

2010.8

UNTITLED

Lyonel Feininger

1948

City

pen and black ink, watercolor over pencil

sight 12 3/8 x 19 in. (31.4 x 48.3 cm)

Gift of Peter and Sophie Neora Kamnitzer

2010.9

A FLOWER PIECE

Richard Earlom

1778

Flowers in vase with insects and bird nest

mezzotint and etching

platemark 21 15/16 x 16 9/16 in. (55.7 x 42 cm) on sheet 24 3/16 x 18 5/16 in. (61.4 x 46.5 cm)

Museum Purchase: Charles M. Williams Endowment

2010.10

A FRUIT PIECE

Richard Earlom

1781

Flowers in vase with fruit

mezzotint with stipple and etching

platemark 22 x 16 9/16 in. (55.9 x 42 cm) on sheet 24 3/8 x 18 11/16 in. (61.9 x 47.5 cm)

Museum Purchase: Charles M. Williams Endowment

# ACCESSIONS

2010.11

A FASHIONABLE LADY HOLDING AN ERMINE-LINED CLOAK  
AROUND HER SHOULDERS

Thomas Frye

1762

Bust length portrait of female with cap, pearl earrings holding fur wrap  
with right hand

mezzotint

platemark 20 x 14 1/16 in. (50.8 x 35.7 cm) on sheet 20 1/2 x 14 1/2 in.  
(52 x 36.9 cm)

The Albert P. Strietmann Collection

2010.12.1

OLDSMOBILE

Edward Ruscha

2009

Automobile emblem. One of seven prints in portfolio called "Motor  
City"

etching and color aquatint

platemark 6 15/16 x 6 7/16 in. (17.6 x 16.4 cm) on sheet 10 5/16 x 9  
9/16 in. (26.2 x 24.3 cm)

On to the Second Century and Joseph Memorial Art Purchase

2010.12.1-7

MOTOR CITY

Edward Ruscha

2009

Seven car emblems portfolio

portfolio of seven etching and color aquatint  
each approx. 10 1/4 x 9 1/2 in. (26 x 24.1 cm)

Museum Purchase: Anonymous Gift in memory of Helen Pernice

2010.12.2

FORD CRESTLINER

Edward Ruscha

2009

Automobile emblem. One of seven prints in portfolio called "Motor  
City"

etching and color aquatint

platemark 6 15/16 x 6 7/16 in. (17.6 x 16.4 cm) on sheet 10 1/4 x 9  
9/16 in. (26 x 24.3 cm)

Museum Purchase: Anonymous Gift in memory of Helen Pernice



Robert Mapplethorpe, *CALLA LILLY*, 1986, Museum  
purchase: Thomas R. Schiff Photography Fund

# ACCESSIONS

2010.12.3

CADILLAC

Edward Ruscha

2009

Automobile emblem. One of seven prints in portfolio called "Motor City"

etching and color aquatint

platemark 6 15/16 x 6 3/8 in. (17.6 x 16.2 cm) on sheet 10 1/4 x 9 9/16 in. (26 x 24.3 cm)

Museum Purchase: Anonymous Gift in memory of Helen Pernice

2010.12.4

FORD

Edward Ruscha

2009

Automobile emblem. One of seven prints in portfolio called "Motor City"

etching and color aquatint

platemark 6 15/16 x 6 7/16 in. (17.6 x 16.4 cm) on sheet 10 5/16 x 9 1/2 in. (26.2 x 24.1 cm)

Museum Purchase: Anonymous Gift in memory of Helen Pernice

2010.12.5

CHEVROLET BEL AIR

Edward Ruscha

2009

Automobile emblem. One of seven prints in portfolio called "Motor City"

etching and color aquatint

platemark 6 7/16 x 6 15/16 in. (16.4 x 17.6 cm) on sheet 10 5/16 x 9 9/16 in. (26.2 x 24.3 cm)

Museum Purchase: Anonymous Gift in memory of Helen Pernice

2010.12.6

PLYMOUTH

Edward Ruscha

2009

Automobile emblem. One of seven prints in portfolio called "Motor City"

etching and color aquatint

platemark 6 15/16 x 6 7/16 in. (17.6 x 16.4 cm) on sheet 10 1/4 x 9 1/2 in. (26 x 24.1 cm)

Museum Purchase: Anonymous Gift in memory of Helen Pernice

# ACCESSIONS

2010.12.7

CHEVROLET

Edward Ruscha

2009

Automobile emblem. One of seven prints in portfolio called "Motor City"

etching and color aquatint

platemark 6 7/16 x 6 7/8 in. (16.4 x 17.5 cm) on sheet 10 1/4 x 9 1/2 in. (26 x 24.1 cm)

Museum Purchase: Anonymous Gift in memory of Helen Pernice

2010.13

SAUCE BOAT

Robert Sturm

Cincinnati/Ohio/United States

1890-1930s

Double-lipped sauce boat with wavy folded rim, attached with a pair of nuts and bolts to a oval conforming dish with wavy folded rim; hand hammered surface finish; four cast and applied medallions with profile of Mercury (two on front and back of body of boat and two directly under the pouring lips of the boat on either side of the dish)

silver

5 1/8 x 10 3/8 x 7 1/4 in. (13 x 26.4 x 18.4 cm)

Museum Purchase with funds provided by Mr. and Mrs. Charles Fleischmann III

2010.14

PLATTER

Robert Sturm

Cincinnati/Ohio/United States

1890-1930s

Round platter with folded rim, shallow well and wide marli; hand-hammered surface; two cast and applied classical medallions with female profile and applied monogram on marli

silver

H. 1 1/4 in. (3.2 cm), Diam. 18 in. (45.7 cm)

Museum Purchase with funds provided by Mr. and Mrs. Charles

Fleischmann III

2010.15

VASE

The Rookwood Pottery Company, Harriet Elizabeth Wilcox

Cincinnati/Ohio/United States

1927

White body, thrown. Baluster shape slightly flaring at bottom, with short circular neck and slightly flaring lip; all on a circular foot with a gray-tinted clear gloss glazed interior and unglazed rim. Decorated in purple, blue, and white slip underglaze with trumpet creeper flowers outlined in black and encircling the vase with one cascade of flowers extending to the bottom. Slip ground color in variations of blue, plum, and purple. All under a gray-tinted, clear gloss glazed exterior and interior

Thrown, porcelain (Black Opal Glaze Line)

H. 14 in. (35.6 cm), Max. Diam. 7 in. (17.8 cm)

Gift of Mr. and Mrs. Thomas M. Cooney



# ACCESSIONS

2010.16

JONAH

Eddie Harper

1975

The bound figure of Jonah is horizontally disposed near a line and a dot along the bottom edge of this sparse composition in white and blue

color screen print

composition 18 1/16 x 26 1/16 in. (45.8 x 66.2 cm) on sheet 21 1/2 x 29 1/8 in. (54.6 x 73.9 cm)

Gift of Ken and Katie Lippincott in memory of Patricia Fitzgerald Felty

2010.17

IN THE GARDEN

Eddie Harper

1975

A shrouded figure hieratically disposed along the central axis of the composition is flanked by rows of flowers

color screen print

composition 10 3/4 x 13 7/16 in. (27.3 x 34.2 cm) on sheet 14 3/16 x 16 1/2 in. (36.1 x 41.9 cm)

Gift of Ken and Katie Lippincott in memory of Patricia Fitzgerald Felty

2010.18

NET PROPHET

Eddie Harper

1976

13 figures in a canoe cast nets into a body of water

color screen print

composition 11 15/16 x 19 15/16 in. (30.4 x 50.7 cm) on sheet 15 3/8 x 22 15/16 in. (39.1 x 58.2 cm)

Gift of Ken and Katie Lippincott in memory of Patricia Fitzgerald Felty

2010.19

SONRISE

Eddie Harper

1976

The sun rises behind fourteen hieratically arranged and bound figures

color screen print

composition 14 x 12 in. (35.6 x 30.5 cm) on sheet 17 1/2 x 14 15/16 in. (44.4 x 38 cm)

Gift of Ken and Katie Lippincott in memory of Patricia Fitzgerald Felty

2010.20

UP, UP AND AWAY

Eddie Harper

1976

Three hot air balloons float above a cityscape

color screen print

composition 16 x 20 in. (40.6 x 50.8 cm) on sheet 19 15/16 x 24 in. (50.6 x 61 cm)

Gift of Ken and Katie Lippincott in memory of Patricia Fitzgerald Felty

# ACCESSIONS

2010.21

THE DISCIPLES

Eddie Harper

1977

A congregation is arranged in four rows below three stained glass windows

color screen print

composition 16 x 16 in. (40.7 x 40.7 cm) on sheet 20 1/16 x 19 15/16 in. (50.9 x 50.7 cm)

Gift of Ken and Katie Lippincott in memory of Patricia Fitzgerald Felty

2010.22

TREE HOUSE

Eddie Harper

1977

Four children, one cat and one bird occupy a tree house

color screen print

composition 20 15/16 x 9 7/16 in. (53.2 x 23.9 cm) on sheet 23 15/16 x 12 3/8 in. (60.8 x 31.5 cm)

Gift of Ken and Katie Lippincott in memory of Patricia Fitzgerald Felty

2010.23

SAMSON AND DELILIAH

Eddie Harper

1978

Delilah enters the bedroom chamber of Samson, who sleeps as he sheds the hairs of his beard

color screen print

composition 9 x 14 15/16 in. (22.9 x 37.9 cm) on sheet 13 x 18 7/8 in. (33 x 48 cm)

Gift of Ken and Katie Lippincott in memory of Patricia Fitzgerald Felty

2010.24

VASE

Ceramic Art Company, Frederick Sturgis Laurence

Trenton/New Jersey/United States

Jun 16 1895

Molded, ivory-colored porcelain body. Oriental-style conoid form with tall, narrow cylindrical neck with two angular handles on slight foot rim.

Painted with underglaze cobalt blue under clear glaze. Obverse: two figures on the edge of a river, two pyramids in background. Reverse: scene with a figure on camel, the Sphinx and two pyramids in the background

glazed porcelain with painted underglaze decoration

H. 11 5/8 in (29.5 cm), Diam. 7 1/2 in. (19.1 cm)

Gift of Jay and Emma Lewis in honor of Bernice and Donald Pollack



Tejo Remy, Droog Design, *You Can't Lay Down Your Memories Chest of Drawers*, ca. 2000, various woods, metal, styrofoam, paint, plastic, hemp, steel, Museum Purchase: Lawrence Archer Wachs Trust, 2010.26

# ACCESSIONS

2010.25

WITH A LITTLE HELP OF THE BEES VASE

Tomas Libertíny, Studio Libertíny, Droog

The Netherlands

2006

Beeswax vase with octagonal body, small foot, tall neck with flaring rim; some holes and nodules, and dark spots evident across the surface; body slumps to one side

beeswax

9 x 5 1/2 x 5 1/2 in. (22.9 x 14 x 14 cm)

Museum Purchase: Lawrence Archer Wachs Trust

2010.26

YOU CAN'T LAY DOWN YOUR MEMORIES CHEST OF DRAWERS

Droog, Tejo Remy

The Netherlands

1991, Circa 2000

Twenty salvaged drawers of various materials set within maple wood frames; drawers are bound together by a fabric cinch strap

maple, various woods, metal, styrofoam, paint, plastic, hemp, steel

45 x 47 x 20 in. (114.3 x 119.4 x 50.8 cm)

Museum Purchase: Lawrence Archer Wachs Trust

2010.27

SILVER LAKE OPERATIONS, #14 [LAKE LEFROY, WESTERN AUSTRALIA]

Edward Burtynsky

2008

chromogenic print

print 48 x 60 in. (121.9 x 152.4 cm)

Museum Purchase: On to the Second Century Endowment, John J. Emery Memorial Fund and various funds

2010.28

5912

James Welling

2008

From the Glass House Series

inkjet print

Museum Purchase: Trustee Art Purchase Fund, Carl Jacobs Gift Fund and the Susan and William Friedlander Endowment

2010.29

TODD M. BROOKS; 22 YEARS OLD: DENVER, COLORADO: \$40

Philip-Lorca DiCorcia

1990-1992

From the series Hustlers

Fujicolor crystal archive print

unframed 30 x 40 in. (76.2 x 101.6 cm)

Museum Purchase: Thomas R. Schiff Photography Gift Fund and Trustee Art Purchase Fund

# DONORS

September 1, 2009 – August 31, 2010

## TABLE OF CONTENTS

Founders Society

Trust and Estate Gifts

New Century Society

Endowment Funds

Annual Fund

Major Program and Project Support

Art Museum Bus for Kids

Corporate Partners

Gifts in Kind

# FOUNDERS SOCIETY

Since its inception in 1987, the Founders Society has been a key element in the support and revitalization of the Cincinnati Art Museum. The generous gifts of the Founders Society provide annual unrestricted support for the development of new exhibitions, the establishment of quality educational programming, and ongoing maintenance of the permanent collection and facilities. The Cincinnati Art Museum expresses its gratitude to the Founders listed below for their giving from September 1, 2009 through August 31, 2010.

## **Queen City Circle \$50,000+**

Mr.\* & Mrs. H. Rowe Hoffman  
(gift to Roaring Tigers,  
Leaping Carp exhibition)

## **President's Circle \$25,000-\$49,999**

Anonymous  
Mr. & Mrs. Peter A. Alpaugh  
(gift to Endowment)  
Mr. Walter G. Alpaugh\*  
(gift to Endowment)  
Mr. & Mrs. L. Thomas Hiltz  
Mrs. Charles A. Phillips  
(gift to Art in Bloom)  
Thomas R. Schiff

## **Trustee's Circle \$15,000-\$24,999**

Mr. & Mrs. Timothy L. Mathile  
Marty & Nick Ragland  
Mr. & Mrs. Thomas Stegman

## **Director's Circle \$10,000-\$14,999**

Thomas P. Atkins  
Mrs. Robert M. Bergstein  
Mr. & Mrs. Robert H. Castellini  
David & Kim Dougherty  
The Farmer Family Foundation  
Mr. & Mrs. Vere W. Gaynor  
Louise & Joe Head

Helen & Brian Heekin  
Mr. & Mrs. Carl F. Kalnow  
Dr. Stanley M. Kaplan  
Florence & Ron Koettters  
Craig & Anne Maier  
Len & Sherie Marek  
Manuel D. & Rhoda Mayerson  
Mrs. Alexander Moore  
Valerie Newell & Timothy Smith  
Susan & Dan Pfau  
Mr. & Mrs. Joseph A. Pichler  
Dianne & J. David Rosenberg  
Mr. & Mrs. John J. Schiff, Jr.  
Rhonda & Larry A. Sheakley  
Family Foundation  
Murray & Robin Sinclair  
Mrs. Joseph T. Sporck-Stegmaier  
John & Francie Williams  
Mr. & Mrs. Anthony R. Woodward

## **Benefactor \$5,000-\$9,999**

Anonymous  
Dr. & Mrs. Ira A. Abrahamson  
Mr. & Mrs. L. Thomas Applegate  
Mr. & Mrs. John F. Barrett  
Mr. Carl Bimel, Jr.  
Mr. Neil K. Bortz  
Patricia C. Brodie  
Mr. Otto M. Budig, Jr.

# Founders Society

Mr. & Mrs. William P. Butler  
Mr. & Mrs. Thomas H. Carruthers IV  
Mr. & Mrs. Charles M. Drackett  
Trey & Chris Heekin  
Mr. & Mrs. Lawrence H. Kyte, Jr.  
Ms. Margaret G. Lafley  
Mrs. Mary S. March  
Mary & John McLaughlin  
Mr. & Mrs.\* A. Ralph Navaro, Jr.  
Adelaide & Tom Ottenjohn  
Mrs. Dorothy Pandorf  
John & Francie Pepper  
Mrs. Marjorie F. Perin  
Lois & Richard Rosenthal  
Mr. & Mrs. John W. Ross, Sr.  
Mr. & Mrs. John Schlegel  
Mr. & Mrs. James E. Stahl, Jr.  
Jack & Joyce Steinman  
Andy & Karen Stillpass  
Charles & Nancy Stix  
Dr. & Mrs. Theodore W. Striker  
Ms. Nancy Swanson & Mr. Jeff Groenke  
Larry & Beth Uhlenbrock  
Michael & Margaret Valentine  
George & Kim Vincent  
Mr. & Mrs. J. Philip Vollmer  
Bill & Barbara Weyand  
Mr. & Mrs. Caleb C. Whitaker III

## **Patron \$2,500-\$4,999**

Anonymous (2)  
Mr.\* & Mrs. J. Richard Andre  
Mr. & Mrs. Andrew P. Barton, Jr.  
Mr. & Mrs. William D. Baskett  
Robert C. & Joan Brown  
Bruce & Janet Byrnes  
Dr. & Mrs. Charles O. Carothers  
Mr. & Mrs. A. Burton Closson, Jr.  
Mr. & Mrs. Robert E. Coletti  
Fuheid & Ingrid Daoud  
Liz & John Dye  
Bill & Carol Eckerle  
Mr. & Mrs. Lyle Everingham  
Mr. & Mrs. Scott D. Farmer  
Mr. Christopher L. Fister  
Mrs. Philip O. Geier  
Lynne Meyers Gordon M.F.A.  
Dr. & Mrs. Donald C. Harrison  
Trey & Chris Heekin  
Irmgard & Horst Hehmann  
Robert & Patricia Henley  
Mr. & Mrs. Richard L. Hildbold  
Ms. Julie Janson  
Sarah & Mark Johnson  
Mr. & Mrs. George Joseph  
Mr. Jerry Kathman & Ms. Liz Grubow  
Mr. & Mrs. Lawrence H. Kyte, Jr.  
Mr. & Mrs. Ernest W. Marshall, Jr.

Mr. & Mrs. Marion P. Mourning  
Leo Munick M.D. & Ms. Alice Fegelman  
Ellie & Erik Nelson  
Margaret M. Reid  
Mr. & Mrs. Gates T. Richards  
Mr. & Mrs. William S. Robertson  
John J. Schiff III  
Dr. & Mrs. Robert C. Schiff, Jr.  
Mr. & Mrs. John E. Shore  
Gerald & Ann Silvers  
Nydia Tranter  
Mr. & Mrs. James B. Van Flandern  
Ms. Sara M. Vance & Ms. Michelle Waddell  
Ms. Hedda von Goeben  
Barbie & Rick Wagner  
Helms Foundation,  
    Mr. Leonard A. Weakley, Jr., Trustee  
Irwin & Barbara Weinberg  
Mike & Sue West  
Alice F. Weston  
Elizabeth & George Wile  
Mr. & Mrs. W. Joseph Williams, Jr.  
Joe & Judy Williams  
Mr. Todd Wurzbacher

## **Founder \$1,500-\$2,499**

Anonymous (2)  
Romola N. Allen  
Mrs. Sylvia N. Altman

# FOUNDERS SOCIETY

Sydney & Bob Anning  
Mr. & Mrs. Leslie T. Applegate, Jr.  
Joan & Oliver Baily  
Mr. & Mrs. William T. Baumann  
Oliver & Jane Birckhead  
Ms. Dorothy Anne Blatt  
Rosemary & Frank Bloom  
Fay K. Boeh  
Gordon & Nadine Brunner  
Mr. & Mrs. Alvin W. Bunis  
Mr. & Mrs. E. F. Castleberry  
Mr. & Mrs. Louis Chabut  
Helen H. Chatfield  
Deborah & Paul Chellgren  
Nancy R. Clagett  
Mr. & Mrs. Michael A. Clauder  
Nancy Coith-Fibbe  
Dr. & Mrs. Robert H. Collins  
Dr. & Mrs. Richard Crisler, Jr.  
James & Joan Crowe  
Mrs. Katharine M. Davis  
Mr. & Mrs. Troy M. DeBord  
Charlotte Newlin Deupree  
Mr. & Mrs. David B. Dillon  
Mrs. J. Gordon Dixon  
Dilly A. Dooley  
Mrs. Helen Dupree  
Bob Economou  
George & Jeane Elliott

Mrs. Jane F. Ellis  
Mr. & Mrs. Theodore H. Emmerich  
Beverly & Fred W. Erschell  
Mr. & Mrs. Guy A. Fibbe III  
Gail F. Forberg  
Mr. & Mrs. David E. Foxx  
Mrs. Kay Copelin French  
Sue & Bill Friedlander  
Mr. & Mrs. Robert Gerwin  
Mr. & Mrs. Jon T. Gimpel  
Mr. & Mrs. Charles W. Goering  
Mr. & Mrs. John B. Goering  
Mrs. Madeleine H. Gordon  
Dorothy Meakin Grant  
Rennie & David Greenfield  
Patricia Griffin  
Ms. Martha S. Griffith  
Mrs. Ernst Hackney\*  
Peg & Dick Halberstadt  
Drs. George & Sarah Hale  
Consuelo W. Harris  
Mr. & Mrs. Irving Harris  
David & Debra Hausrath  
Robert W. Helmholz  
Mrs. John R. Helmsderfer  
David C. Herriman  
Mr. & Mrs. Joseph W. Hirschhorn  
Mrs. Claire Hoch\*  
Mr. Roy E. Hock

Mary Jo Holohan  
Lee & Carolyn Honkomp  
Mrs. William H. Hopple, Jr.  
Barbara V. Howard  
Mr. & Mrs. Roger L. Howe  
Margot B. Jacobs  
Andrew MacAoidh Jergens &  
Linda Busken Jergens  
Mr.\* & Mrs. Robert J. Johannigman  
Mrs. Josephine Joseph\*  
Marcia & Ronald Joseph  
Mr. & Mrs. William J. Keating  
Dr. Robert A. Kemper  
Dr. & Mrs. Kenneth Kreines  
Kathy & Mike Krug  
Mr. & Mrs. S. George Kurz  
Pinky & Polk Laffoon IV  
Mr. A. G. Lafley  
Mr. Lawrence A. Leser  
Gary J. Lind & Janet R. Hackney  
Tom & Adele Lippert  
Mr. & Mrs. Bruce C. Long  
Whitney & Phillip Long  
Mr. & Mrs. Kenneth W. Lowe  
Judy Lucas (Stanley)  
Dr. Jim Mahon  
Ms. Peggy Ann Markstein  
(gift to flower fund)  
Mr. & Mrs. William O. Mashburn III



# FOUNDERS SOCIETY

Mrs. Jane W. Mashburn  
Mrs. H.M. Mathis, Jr.  
Mr. & Mrs. Michael Mathis, Jr.  
Mr. & Mrs. Michael S. McGraw  
Powell McHenry  
Mrs. Jack Meanwell  
Ms. Ann M. Meranus  
James & Mary Miller  
John & Connie Miller Fund of the Community  
Foundation of Collier County  
Mr. & Mrs. David A. Millett  
Mr. & Mrs. Thomas E. Mischell  
Anu & Shekhar Mitra  
Marjorie Motch  
Mr. & Mrs. John C. Mueller, Jr.  
Angela Murrer  
George & Anne Musekamp  
Judge & Mrs. David A. Nelson  
Scott Nelson & Susan Kindel  
Mr. & Mrs. Eric C. Nielsen  
James & Mary Nordlund  
Debbie & Rich Oliver  
Mr. & Mrs. Robert B. Ott  
Mr. & Mrs. George H. Perbix  
Mrs. Henry E. Pogue  
William R. Powell & Lisa Stephenson  
Dr. & Mrs. Robert H. Preston  
Doreen Quinn  
Mr. & Mrs. Daniel P. Randolph

Mrs. Bernard S. Reckseit  
David & Marilyn Reichert  
Pamela & Richard D. Reis  
Melody Sawyer Richardson  
Nina & Millard Rogers  
Mr. & Mrs. Edward S. Rosenthal  
Margo K. Ross  
Mr. & Mrs. Snowden Rowe  
(gift to Curatorial)  
Mr. & Mrs. Jack Rouse  
Mrs. Donna L. Schiff  
James & Elizabeth Schiff  
Mr. & Mrs. Mark Schlachter  
Mrs. Clarinda S. Schmidlapp  
James & Margaret Schrimpf  
K. & V. Shahani  
Jewell Lewis Shane  
Dr. Edward B. Silberstein &  
Mrs. Jacqueline M. Mack  
Mr. & Mrs. Gerald Skidmore  
Mr. John G. Smale  
Ellen & Clark Sole  
Mrs. Juddy Solomon  
Mr. & Mrs. Morton L. Spitz  
St. Rose Church  
Cheryl & Carlin Stamm  
John Steele  
Judy & Steven Stein  
Joseph S.\* & Mary Stern

Elizabeth A. Stone  
Lenore O. Stulbarg  
Mrs. Richard H. Sutphin  
Jerome & Sue Teller  
Dr. & Mrs. John M. Tew, Jr.  
Mrs. Richard Thayer\*  
Mr. & Mrs. J. Dwight Thompson  
Howard & Marty Tomb  
Christopher & Nancy Virgulak  
Mr. & Mrs. Stephen G. Vollmer  
Mrs. Ronald F. Walker  
Mr.\* & Mrs. Charles Weiner  
Mrs. Patricia Weiner  
Mrs. Phyllis J. Weston  
Mr. & Mrs. Thomas L. Williams  
Mr. & Mrs. Gene M. Wilson  
Jean Wommack  
Dr. John H. Wulsin  
Linda & Jeffrey L. Wyler  
Mr. & Mrs. Allen G. Zaring III  
Jim & Alison Zimmerman



At the Founders Society Director's Circle Dinner for Thomas Gainsborough and the Modern Woman.

# TRUST AND ESTATE GIFTS

The Cincinnati Art Museum gratefully recognizes the generosity and foresight of those individuals who have provided support through trust or estate gifts. These important gifts help to perpetuate the Art Museum's tradition of artistic excellence and service to the community. All legacy gifts are designated to the endowment unless otherwise restricted, thereby providing in perpetuity for the Art Museum's operations and art acquisitions.

The Alpaugh Family Trust  
The L.W. Scott Alter Trust  
Alice & Carl Bimel Charitable Remainder Trust for Natalie  
Thomas W. Busse Charitable Trust  
Clark W. Davis Trust  
Estate of L. Patton Davis  
Estate of Flora C. Ewers  
Estate of Walter E. Geier  
Robert W. & Isabel Yeatman Gwinner Fund of  
    The Greater Cincinnati Foundation  
The Dorothy M. M. Kersten Trust  
The Elma Margaret Lapp Foundation  
Estate of Betty H. Palmer  
Margaret McWilliams Rentschler Fund of  
    The Greater Cincinnati Foundation  
The Richard F. Schaengold Charitable Trust  
John R. Strauss Charitable Lead Annuity Trust  
The Lawrence Archer Wachs Trust  
Estate of Ellen Waite  
Judson Martin Wilson Foundation

# NEW CENTURY SOCIETY

Anonymous (3)  
Dr. & Mrs. Ira A. Abrahamson  
Mrs. Robert B. Adams  
Judith H. Adams  
Norma E. Allen  
Romola N. Allen  
Frank & Janet Andress  
Carole J. Arend  
Christine Marting Baermann  
Noma Jewell Bellissemo  
Mrs. Robert M. Bergstein  
Allen W. Bernard  
Dava L. Biehl  
Mr. Neil E. Billman  
Mr. & Mrs.\* Carl Bimel, Jr.  
Paula S. Biren, M.D.  
Lucille G. & Dutro Blocksom  
Stephen D. Bonadies  
Ms. Charlotte Brooks  
Mrs. Virginia W. Brooks  
Mr. Otto M. Budig, Jr.  
Mrs. Carolyn Caldwell  
Myra M. Chabut  
Mrs. Jackson L. Clagett III  
Mr. & Mrs. A. Burton Closson, Jr.  
Joan Cochran  
Richard & Carole Cocks  
Stanley & Frances Cohen  
Nancy Coith-Fibbe

Elizabeth B. Corman  
Jack E. Daugherty  
Mrs. Arthur M. Davies  
Harrison R. T. Davis  
Mrs. L. Patton Davis\*  
Mr. & Mrs. B. Crane DeCamp  
Virginia Neal Dick  
Barbara M. Donohue  
Elaine & Arnold B. Dunkelman  
Mr. & Mrs. William R. Eckerle  
Flora C. Ewers \*  
William & Susan Friedlander  
Theodore A. Gantz  
Mr. Walter E. Geier \*  
Mr. S. Bradley Gillaugh  
Rennie & David Greenfield  
Mrs. Ellen W. Haffner\*  
Dr. M. Donald Hayes  
Marcia & Paul Hendrick  
Mr. John H. Hermanies  
Andrea & Dr. Edward Herzig  
Karlee L. Hilliard  
Dr. \* & Mrs. \* Michael Hoch  
Mr. & Mrs. Edward Hogan  
Mrs. David J. Joseph, Jr. \*  
Mr. Peter Kamnitzer & Dr. Sophie Kamnitzer  
Dr. Robert A. Kemper  
Janet C. Kreider  
Dr. & Mrs. Kenneth Kreines

Mr. & Mrs. Lawrence H. Kyte, Jr.  
Thomas P. Lee  
Mr. Robert A. Lewis  
Thomas & Adele Lippert  
Ms. Suzanne B. Loeffler  
Ronald & Barbara Lyons  
Dr. Maurice D. Marsh  
David Mason  
Stewart Shillito Maxwell, Jr.  
Mr. & Mrs. Manuel D. Mayerson  
Dr. & Mrs. I. Arthur Michaelson  
Charles F. & Philomena A. Miller  
Mr. & Mrs. James Monroe, Jr.  
Mr. & Mrs. Arnold Morelli  
Ms. Arthur E. Motch, Jr.  
Dr. Leo H. Munick, M.D.  
J. Morton & Barbara L. Nicholson  
Maurice E. Oshry  
Mrs. Betty H. Palmer\*  
Mary Louise Palmer  
William H. Phelan  
Miss Dorothy L. Plsek  
Ms. Margaret Quinn  
Daniel & Irene Randolph  
David & Marilyn Reichert  
Edward J. Requardt  
Mr. & Mrs. Lawrence H. Rogers II  
Mr. & Mrs. Millard F. Rogers, Jr.  
Mr. & Mrs. Joseph H. Rohling

# NEW CENTURY SOCIETY

Emalee F. Schavel  
Abby E. Schlachter  
Rosemary & Mark Schlachter  
Carson E. Smith  
Kristin L. Spangenberg  
Ron & Jan Stahl  
Robert B. & Mary C. Stewart  
Mr. Fred W. Strebel  
Dr. & Mrs. Robert J. Strub  
Mrs. Richard Thayer\*  
Mr. Clifford William Thies  
Mr. & Mrs. G. Richard Thomas  
Dr. & Mrs. Thomas U. Todd  
Ms. Sara M. Vance  
Barbara Wagner  
Mr. \* & Mrs. \* Richard Waite  
Mr. David A. Walker  
Ms. Kathryn A. Webb  
Dr. & Mrs. Joel Weisman  
Susan C. & Michael R. West  
Alice F. Weston  
Nancy & David Wolf  
Mrs. Carl I. Wyler



Learning from American art.  
Gallery 216

# ENDOWMENT FUNDS

Endowments provide a permanent financial foundation for the Cincinnati Art Museum. Since the first endowment was established in 1881, these funds have ensured that the Cincinnati Art Museum will be enjoyed by generations to come. Specialized endowments help care for the collection, purchase new works of art, organize exhibitions, and provide educational programs to our city and region.

Anonymous (2)  
Adams-Emery Operating Endowment Fund  
Edith Alexander  
Elizabeth H. Appleton Endowment  
Estate of Ilse Arlinghaus  
Bolton M. Armstrong Memorial  
Robert W. Ashbrook Foundation  
The Estate of Kate Banning  
Adelaide B. Bieser Endowment  
Benesse Endowment in memory of  
Yasuo Kuniyoshi  
Alice & Carl Bimel Endowment for  
Asian Art  
Carlyn M. Bimel & Natalie S. Bimel  
Memorial Endowment  
Alice L. Bimel Endowment  
Alice & Carl Bimel, Jr. Memorial Fund  
Estate of Betty J. Brothers  
Irene Boswell Buhr Fund  
The Ward E. Bullock Endowment for  
Interactive Education  
Cincinnati Financial Corporation Children's  
Admission Fund  
Estate of Melissa Compton  
John S. Connor Fund  
Flora C. Ewers  
Estate of Emilie T. Curry  
Estate of Virginia T. Curry  
Robert S. Dechant Endowment

Dorothy Dexter Trust  
Mary Dexter Endowment  
Mary Lane Diamond Endowment  
Mrs. William Dodd Memorial  
Estate of Stanley Eisenberg  
John J. Emery Memorial Fund  
John J. Emery Endowment  
Mary M. Emery Endowment  
Thomas J. Emery Free Day Endowment  
Estate of James M. Ewell  
Fleischmann Endowment  
Estate of Louise Fletemeyer  
Anna Hurd Folsom Endowment  
Estate of Franklin Folger  
Herbert Greer French Endowment  
The Susan & William Friedlander Endowment  
Jane Reid Fristoe Endowment  
Mrs. Paul E. Geier in memory of Paul E. Geier  
Estate of Emma R. Goetz  
Estate of Eugenia I Goshorn  
Estate of Myranda Gradolf  
Greater Cincinnati Foundation Endowment  
Mary Hanna Endowment  
Cornelius J. Hauck Art Museum  
Greenery Fund  
The Heekin Endowment  
Emilie L. Heine Bequest  
Estate of Mrs. Anne L. Herget

# ENDOWMENT FUNDS

Mark P. Herschede Acquisition  
Endowment Fund  
Hinkle Memorial Endowment  
Monroe Hinkle Memorial Endowment  
Isabella F. Hopkins Estate  
Louise Budd Howard Endowment  
A. J. Howe Endowment  
Clara Hunter Fund  
The Edwin & Virginia Irwin Memorial  
Estate of Dorothy R. Jones  
Estate of Walter W. Kent  
Edmund Kerper Endowment in memory of  
George B. & Louise Kerper  
Mr. & Mrs. A. M. Kinney, Jr. Endowment  
Eleanor C. Knoechel Endowment  
Barbara & Kenneth Kreines Fund for the  
Support of American Fine & Decorative Arts  
Estate of Margaret A. Kunz  
Fanny Bryce Lehmer Endowment  
Isabel Cone Levy &  
Sam Malcolm Levy Endowment  
Mr. & Mrs. Harry S. Leyman Endowment  
Life Membership Endowment  
Carol & Martin Macht Fund for the  
Decorative Arts  
Wilma G. Marks Endowment  
Virginia Geier McCurdy Endowment in honor  
of Paul E. Geier & Gabrielle Geier  
Estate of Henry Meis

Estate of Martha Elizabeth Nord  
Beverly S. Petrie Endowment Fund  
Estate of Charles A. Phillips  
The PNC Fund  
Estate of William A. Pogue  
Estate of Helen Rose Reis  
The George & Ellen Rieveschl Fund  
Estate of Helen Rudolph Riley  
Millard F. Rogers, Jr. Art Purchase Endowment  
The Lois & Richard Rosenthal Foundation  
Endowment  
Louise & Stanley Rowe Fund  
Rudolph Oscar Schmidlapp Memorial Fund  
Second Century Endowment  
Booth Shepard Estate  
Donald P. Sowell Endowment  
Estate of Reuben R. Springer  
The William & Susan Friedlander &  
Jane Steinfirst Fund  
Carl Strauss Estate  
Albert P. Strietmann Fund  
Estate of William W. Taylor  
Dorothy & Walter Tedtmann Endowment Fund  
Phyllis H. Thayer Purchase Fund  
Gloria W. Thomson Fund for Decorative Arts  
Estate of George M. Toewater  
Estate of Elissa Valerio  
The Patricia A. Vance Foundation Endowment  
for Education & Community Outreach

Elizabeth Strong Vincent Endowment  
Alice R. Werk Estate  
Charles W. West Endowment  
Western & Southern Financial Fund  
Laura L. Ogden Whaling Endowment Fund  
Bequest of Mr. & Mrs. Walter J. Wichgar  
Charles Matthew Williams Endowment Fund  
The Williams Fund  
Israel & Caroline Wilson Memorial  
David & Nancy Wolf Endowment for  
Decorative Arts  
Estate of Dorothy C. Woodruff  
Fanny R. & Grace K. Wurlitzer Foundation

# ANNUAL FUND

There are many donors who make contributions throughout the year to the Cincinnati Art Museum's Annual Fund, including memorial and tribute gifts. To all those who made an investment of unrestricted support in the Art Museum totaling \$100 or greater between September 1, 2009 and August 31, 2010, we express our thanks.

## **\$5,000**

Anonymous  
Mrs. Martha B. Adair\*

## **\$1,000-\$4,999**

Anonymous (3)  
Dr. Diane S. Babcock  
Mrs. Jean F. Bloch  
Mr. & Mrs. Bruce Brown  
Cathryn Buford  
Mr. Douglas S. Cramer  
Mr. Terrence M. Crawford  
Mr. & Mrs. Jeffrey M. Dobranski  
Family Investment Services  
Cathy & Otto Hausknecht  
Mrs. Anne P. Heldman  
Dr. & Mrs. Graydon A. Long  
Patsy & Bob Pike  
Mr. & Mrs. Marvin H. Schwartz  
Mr. John G. Smale  
The Marcia Brady Tucker Foundation, Inc.

## **\$500-\$999**

Anonymous  
Mr. Anatole Alper & Ms. Audrey Albin  
Dan & Fran Bailey  
Mrs. Elizabeth K. Blake  
Lucille G. Blocksom  
Albert B. Cord Charitable Foundation

Mr. Louis M. Dauner &  
Ms. Geraldine N. Wu  
Diamond Tours, Inc. / Tour & Travel  
Rose W. Drucker Trust  
Mrs. Helen Dupree  
Mr. James Gielty  
Mr. Charles M. Judd  
Ms. Arleene Keller  
Mr. & Mrs. Daniel W. LeBlond  
Mr. Robert A. Lewis  
Mr. & Mrs. Leonard S. Meranus  
James & Mary Miller  
Mr. & Mrs. Eric C. Nielsen  
Mr. & Mrs. C. Richard Paulsen  
Margaret M. Reid  
Mr. & Mrs. Ronald H. Stern  
Mr. J. Mack Swigert  
Mr. Alexander P. Vollmer  
Mr. Daniel H. Vollmer  
Ms. Hilary L. Vollmer  
Ms. M. Paige Vollmer King  
Ms. Meridith Vollmer McLane  
Mr. Stephen Griffin Vollmer, Jr.  
Mr. & Mrs. A.C. Voorhis  
Mr. & Mrs. Joseph H. Warkany

## **\$100-\$499**

Anonymous  
Mr. & Mrs. Richard H. Allen



# ANNUAL FUND

Mrs. Rosalie F. Andrews  
Dr. & Mrs. Victor D. Angel  
Mrs. C. Robert Aufmann  
Ms. Yvette L. Ault  
Ms. Sheila Avidon  
Mr. & Mrs. Thomas B. Avril  
Ms. Sharon Baker  
Dr. Barbara Bardes  
Mr. & Mrs. Charles Barham III  
Ms. Dorothy C. Barnes  
Mr. Ron Bates  
Mr. Wilford L. Baumes  
Mr. Bruce Behlow  
Mr. & Mrs. Robert A. Behrmann  
Mrs. Helen A. Benjamin  
Mrs. Thomas S. Benjamin  
Mr. & Mrs. Leonard H. Berenfield  
Mrs. Ellen A. Berghamer  
Mrs. Frank Bergstein  
Dr. Allen W. Bernard  
Mrs. Mary Besanceney  
Mr. Neil E. Billman  
Mr. & Mrs. David A. Billmire  
Mr. Carl Bimel, Jr.  
Ms. Jeanette Binegar  
Ms. Shannon Bolon  
Mr. & Mrs. Gary E. Booth  
Ms. Ellen Boswell  
Mr. & Mrs. Philip L. Breen

Dr. & Mrs. Douglas C. Brengle  
Mr. & Mrs. Henry P. Briggs, Jr.  
Mr. & Mrs. James G. Briggs, Jr.  
Patricia C. Brodie  
Mr. Robert W. Brose  
Mr. & Mrs. Randy T. Brunk  
Mr. & Mrs. Louis Buschle  
Dr. & Ms. Lanthan D. Camblin  
Mr. & Mrs. Ramon A. Cardona  
Ms. Betty Cavanaugh  
Mr. Edward R. Chamberlin  
Mrs. Zorayda Chamness  
Linda & Kevin Chaney  
Mr. & Mrs. Matthew Chinsky  
Cincinnati Wellesley Club  
Mr. & Mrs. Addison H. Clipson, Jr.  
Lois & Philip Cohen  
Dr. & Mrs. John M. Collins  
Ms. Katherine R. Connerth  
Ms. Patricia A. Corcoran  
Mr. & Mrs. Ralph C. Corley  
Jodelle Crosset  
Mrs. Caroline Davidson  
Dayton Foundation  
Mr. & Mrs. B. Crane DeCamp  
Dr. George Deepe  
Ms. Judith Deluce  
Mr. & Mrs. David W. Deye  
Mr. & Mrs. Albert C. Dierckes, Jr.

Mrs. Claire E. Dierckes  
Ms. Mary Elizabeth Dodson  
Mr. & Mrs. David W. Dressler  
Ms. Jennifer Drydyk  
Dr. Olga C. Duarte-Rachovitsky &  
    Dr. Harel Rachovitsky  
Mrs. Betty M. Duncan  
Mr. Mark J. Durket  
Ms. Louise E. Dusing  
Mr. & Mrs. Jonathan Eaton  
Mrs. Tara T. Eaton  
Bill & Carol Eckerle  
Dr. & Mrs. Philip Edlin  
Ms. Joyce Elkus  
Mr. & Mrs. E. Allen Elliott  
Mr. & Mrs. William Engeman  
Mr. Osama Ettouney  
Mr. George Fabe  
Mrs. H. O. Finkelman  
Mrs. Barbara Fitch  
Mrs. Gordon L. Foote  
Ms. Avery W. Foster  
Mrs. Susan Fox  
Mrs. Carol S. Friel  
Ms. Jean C. Frolicher &  
    Ms. Patricia A. Frolicher  
Mr. & Mrs. Frank Gardner  
Mr. & Mrs. James R. Gardner  
Mr. Timothy A. Garry

# ANNUAL FUND

Miss H. Jane Gavin  
GE Foundation  
Mrs. Philip O. Geier  
Ms. Thelma D. Gladfelter  
Dr. Sylvan & Faith Golder  
Mrs. Elizabeth D. Goldsmith  
Mr. Calvin C. Goodrich  
Lynne Meyers Gordon M.F.A.  
Ms. Drew Gores & Mr. George Warrington  
Mr. R. McDonald Gray  
Patricia Griffin  
Mr. & Mrs. Alan Griffith  
Ms. Katherine H. Groll  
Mr. Alan Guttman  
Mr. & Mrs. John H. Habbert III  
Mr. & Mrs. Richard C. Haberstroh  
Ms. Jane F. Hansley  
Mr. & Mrs. J. J. Harrington  
Mr. & Mrs. Robert F. Hartkemeier  
Louise & Joe Head  
Irmgard & Horst Hehmann  
Mr. Donald J. Heimbrock  
Dr. & Mrs. Edward B. Herzig  
Mr. & Mrs. Don H. Hinkley  
Mr. & Mrs. Joseph W. Holiday  
Mr. & Mrs. Roger W. Honebrink  
Mr. Stanley A. Hooker III  
Mr. & Mrs. H. Noel Horne  
Evelyn & Michael Howett

Mr. & Mrs. John J. Isch  
Mr. & Mrs. Michael Ivins  
Ms. Mary Jacqmin  
Jewish Federation of Cincinnati  
Mr. Robert A. Johnston  
Mrs. Lois M. Jones  
Mr. & Mrs. Steven A. Jones  
Prof. & Mrs. William R. Jones  
Marcia & Ronald Joseph  
Dr. Stanley M. Kaplan  
Mrs. Mary Kartal  
Mr. & Mrs. Ray A. Kemper  
Mr. & Mrs. Dave Keyser  
Ms. Elizabeth J. Kloecker  
Mrs. Harvey C. Knowles  
Dr. David J. Knutson &  
    Dr. Anna M. Goldhahn  
Mrs. Carol Kortekamp  
Mr. Jerome J. Kramer  
Mr. & Mrs. Michael H. Kremzar  
Richard & Susan Lauf  
Mrs. Anne I. Lawrence  
Mr. & Mrs. James Lawrence  
Mr. Thomas P. Lee  
Mr. & Mrs. Philip Leege  
Dr. & Mrs. Bradley M. Lemberg  
Mrs. Jean Lemon  
Mr. & Mrs. Don Lichtenberger  
Gary J. Lind & Janet R. Hackney

Dr. Jennifer Loggie  
Mr. & Mrs. Stephen Mahon  
Mr. & Mrs. Richard Maier  
Mr. & Mrs. Sava Marcikic  
Mr. & Mrs. Harold N. Margolin  
Mr. & Mrs. Ernest W. Marshall, Jr.  
Estate of Elizabeth A. Martin  
Noelle K. & Teruo Masukawa  
Mr. & Mrs. Robert S. Maxwell  
Mr. Douglas McCray  
Mr. Mark E. McKillip & Ms. Amira Beer  
Mr. & Mrs. Kenneth McWhorter  
Ms. Mary Louise Meek  
Mr. & Mrs. Alvin Z. Meisel  
Meisel Family Foundation  
Mr. & Mrs. Trenholm N. Meyer  
Dr. Douglas H. Linz &  
    Dr. Deborah A. Middaugh  
Curtis E. Miller \*  
Patty Misrach  
Anu & Shekhar Mitra  
Sally A. More  
Miss Vivian Kay Morgan  
Marjorie Motch  
Mrs. Eunice H. Murphy  
Dr. & Mrs. Charles M. Myer III  
Mr. William Naumann & Ms. Anne Hochwalt  
Rev. Christopher F. Neely  
Mr. & Mrs. Alfred K. Nippert

# ANNUAL FUND

Mr. & Mrs. Brad Nogar  
James & Mary Nordlund  
Norfolk Southern Foundation  
Mr. H. Kenneth Peterson &  
    Ms. Kathleen V. O'Connell  
Bill Phelan  
Ms. Reiko N. Powers  
Mr. & Mrs. Philip M. Price, Jr.  
Ms. Margaret Quinn  
Dr. Olga C. Duarte-Rachovitsky &  
    Dr. Harel Rachovitsky  
Mr. Robert A. Raines &  
    Mrs. Deborah Rouse-Raines  
Mrs. Sue Ransohoff\*  
Margaret M. Reid  
Ms. Karen Renzulli Lynch  
Ms. Alexandra B. Reynolds  
Mrs. James Vaden Rice  
Mr. & Mrs. Edgar Rizzo  
Hon. & Mrs. Jack Rosen  
Mr. & Mrs. Carlos Rubio  
Mrs. Maurie C. Russo  
Mr. & Mrs. Michael Ryan  
Mr. & Mrs. Clarence P. Sampson  
Ms. Caryl Samuels  
Mr. & Mrs. Armin E. Scharfe  
Mr. David R. Schenck  
Mrs. Anita S. Scherer  
Mrs. Emily Scherz

Mr. & Mrs. Charles Schlegel  
Ms. Dolores C. Schuessler  
Mr. Theodore L. Schwartz  
Mr. & Mrs. James H. Scott  
Larry & Rhonda Sheakley  
Mr. & Mrs. John E. Shore  
Mr. & Mrs. Nicholas Shundich  
Bob Singer, Linda Singer  
Andrew D. Smith  
Mr. Carson E. Smith  
Mrs. Clarke Sperry  
Mr. & Mrs. John Spiess  
St. John's Reformed Episcopal Church Fund  
Ms. Paula Steiner  
Ms. Marjorie A. Stephenson  
Mrs. Bobbie Sterne  
Mrs. George P. Stimson  
Ms. Virginia B. Stirling  
Ms. Anne M. Stirnkorb  
Dr. Susan R. Strick  
Mrs. Helen C. Sutton  
Mr. & Mrs. William R. Talbot, Jr.  
Mr. & Mrs. Arthur G. Tallas  
Ms. Margaret Taske  
Mr. & Mrs. Viktor Theiss  
Ronald & Elizabeth Tinklenberg  
Dr. & Mrs. Samuel P. Todd, Jr.  
Dr. & Mrs. David Tondow, Jr.  
Mr. & Mrs. James R. Troutt

Mr. & Mrs. Jack Twyman  
Ms. Rita Uehlein  
Mr. & Mrs. Stephen G. Vollmer  
Mr. & Mrs. Randolph L. Wadsworth, Jr.  
Mr. & Mrs. Paul H. Ward  
Mr. George H. Warrington &  
    Ms. Henrietta D. Gores  
Mr. & Mrs. Robert J. Watkins  
Mr. & Mrs. Richard S. Wayne  
Ms. Marilyn J. Wehri  
Mrs. Mary E. West  
Mr. & Mrs. Curt Wilhelm  
Mr. & Mrs. Henry H. Wilson  
Mrs. Holden Wilson  
Tim & Georgine Wolohan  
Mrs. Carl I. Wyler  
Mr. & Mrs. Eric B. Yeiser



A Taste of Duveneck 20th anniversary - June 2010  
photo: Erin Althoff

# MAJOR PROGRAM SUPPORT

## **Gifts for Acquisitions, Conservation & Curatorial**

Anonymous  
The L.W. Scott Alter Trust  
Sydney & Bob Anning  
Thomas P. Atkins  
Allan Berliant & Jennie Rosenthal Berliant  
Robert C. & Joan Brown  
Dr. & Mrs. John A. Chewning  
Dr. & Mrs. Andrew B. Chun  
Cincinnati Asian Art Society  
Dr. & Mrs. Robert H. Collins  
Mr. & Mrs. William Connell  
Lee Cowan Tour Group Fund  
Decorative Arts Society of Cincinnati  
Ms. Karen Deime  
Mr. Matthew D. Distel  
The Jeanann G. Dunlap Foundation  
Frisch's Restaurants  
Mr. & Mrs. Vere W. Gaynor  
Fine Art Exhibition & Project Management  
Lynne Meyers Gordon M.F.A.  
Ms. Tamara S. Harkavy &  
    Mr. Mathew J. Kotlarczyk  
David & Debra Hausrath  
Helen & Brian Heekin  
The Jeffrey Horvitz Foundation  
Lois & Dick Jolson  
Frank Jordan

The Kaplan Foundation  
Florence & Ron Koettters  
Tom & Adele Lippert  
Mr. Dale A. Louda & Mrs. Ann D. Navaro  
Judy Lucas (Stanley)  
Craig & Anne Maier  
Mrs. William D. Meyer  
Michael Lowe Gallery  
Marjorie Motch  
Leo Munick M.D. & Ms. Alice Fegelman  
National Endowment for the Humanities  
Oliver Family Foundation  
Mr. & Mrs. Gates T. Richards  
Lois & Richard Rosenthal  
Mr. & Mrs. Jeffrey Routh  
Mr. & Mrs. Snowden Rowe  
Mr. & Mrs. Charles O. Schiff  
Thomas R. Schiff  
Mr. Linda Schwartz  
Murray & Robin Sinclair  
Skyler Foundation  
Mr. & Mrs. Thomas Stegman  
Andy & Karen Stillpass  
Ms. Sara M. Vance & Ms. Michelle Waddell  
Alice F. Weston  
Nancy & David Wolf  
Mr. & Mrs. Steven M. Wolf

## **Gifts for Building & Grounds Improvements**

Ms. Peggy Ann Markstein  
Western & Southern Financial Fund

## **Gifts for Educational Programming Including the Art Museum Bus for Kids Fund**

Anonymous (2)  
ArtsWave  
Drs. Judith C. Bausher & Herbert Y. Gilliam  
Mr. Carl Bimel, Jr.  
Clement & Ann Buenger Foundation  
Cincinnati Art Museum Shop  
Lewis & Marjorie Daniel Foundation  
Charles H. Dater Foundation, Inc.  
Dedalus Foundation, Inc.  
William A. &  
    Martha H. Hillenbrand Foundation  
Lee & Carolyn Honkomp  
Leesman Lighting, LLC  
Mr. William J. Leugers  
Mr. & Mrs. Bruce C. Long  
National Endowment for the Arts  
Ellie & Erik Nelson  
Perma-Cote  
PNC  
Connie Rave  
Ms. Virginia E. Rave  
The Rotary Foundation of Cincinnati  
James & Margaret Schrimpf

# MAJOR PROGRAM SUPPORT

The John A. Schroth Family Charitable Trust,  
PNC Bank, Trustee  
Mr. & Mrs. Herbert A. Slater  
Mr. & Mrs. James E. Stahl, Jr.  
Toyota Motor Engineering &  
Manufacturing North America, Inc.  
Tim & Georgine Wolohan  
Wyoming Art Show

## Gifts for Exhibitions

Anonymous  
The Blakemore Foundation  
Ms. Sharon S. Divell  
Sue & Bill Friedlander  
Frisch's Restaurants  
Fund Evaluation Group, LLC  
GE Aviation  
The Greater Cincinnati Foundation  
Mr.\* & Mrs. H. Rowe Hoffman  
Carl Jacobs Foundation  
LPK, Inc.  
Macy's, Inc.  
National Endowment for the Arts  
National Endowment for the Humanities  
The Sheakley Group of Companies  
J. Frederick & Helen B. Vogel Trust  
The Women's Committee of the  
Cincinnati Art Museum



The Ward E. Bullock Endowment for Education  
Gallery 227

# CORPORATE PARTNERS

The Cincinnati Art Museum thanks our Corporate Partners for their investment of time, talents, and financial support during the fiscal year beginning September 1, 2009 through August 31, 2010.

## **Leader \$50,000+**

Macy's, Inc.  
PNC

## **Partner \$25,000 - \$49,999**

Frisch's Restaurants  
The Sheakley Group of Companies  
Western & Southern Financial Fund

## **Sponsor \$10,000 - \$24,999**

Catholic Health Partners  
Chase  
Fund Evaluation Group, LLC  
LPK, Inc.  
Mercy Health Partners  
RiverPoint Capital Management

## **Contributor \$5,000 - \$9,999**

HORAN

## **Member \$2,500 - \$4,999**

Bona Decorative Hardware  
Clark Schaefer Hackett  
Comey & Shepherd Realtors  
Dewey's Pizza  
Messer Construction Co.  
ProLiance Energy  
Waltek & Company, LTD

# GIFTS IN KIND

The following businesses, organizations and individuals have contributed products or services that they have valued over \$1,000.00. In doing so, they have made a valuable contribution to the work of the Cincinnati Art Museum during the fiscal year beginning September 1, 2009 through August 31, 2010.

Christie's  
Cincinnati Magazine  
The Merten Company  
Prestige Audio Visual  
Mr. and Mrs. Edward S. Rosenthal  
Worldwide Graphics & Sign Co.



# LEADERSHIP

# Cincinnati Museum Association

## Cincinnati Art Museum

### Board of Trustees 2009-2010

#### Officers

Larry A. Sheakley,  
Chairman of the Board  
George H. Vincent, President  
Craig F. Maier, Vice President  
Vere W. Gaynor, Treasurer  
Martha H. Ragland, Secretary

L. Thomas Applegate  
John F. Barrett  
Calvin D. Buford  
Kevin W. Canafax  
Susan F. Castellini  
David F. Dougherty  
David L. Fisher  
Patricia A. Foxx  
S. Kay Geiger  
George C. Hale, M.D.  
Joseph H. Head, Jr.  
L. Thomas Hiltz  
Elizabeth Tu Hoffman  
Carl F. Kalnow  
Stanley Kaplan, M.D.

Jerome C. Kathman  
Ronald A. Koettters  
Mark L. Mallory, Mayor of Cincinnati  
Ernest W. Marshall, Jr.  
Rhoda Mayerson  
Valerie L. Newell  
Richard D. Oliver  
Dianne M. Rosenberg  
Murray Sinclair, Jr.  
Thomas A. Stegman  
Andrew Stillpass  
Nancy K. Swanson  
Sara M. Vance  
James C. Votruba  
John P. Williams, Jr.  
Todd Wurzbacher

#### Appointments

Aaron Betsky, Director  
Carolyn Honkomp, President of  
Volunteer Advisory Council  
Mary Ronan, Superintendent of  
Cincinnati Public Schools

#### Honorary Trustees & Director Emeritus

Oliver W. Birckhead  
Christine Evans  
Charles Fleischmann III  
Robert B. Ott  
David Reichert  
Jewell Lewis Shane  
John F. Steele, Sr., Trustee Emeritus  
Dorothy Weil  
Millard F. Rogers, Jr., Director Emeritus

# CINCINNATI MUSEUM ASSOCIATION SHAREHOLDERS

Ira Abrahamson  
Judith Hauser Adams  
Romola Allen  
Peter A. Alpaugh  
Mrs. Jeffrey Anderson  
J. Richard Andre  
Leslie T. Applegate  
Kathleen Atkinson  
Oliver Lippincott Baily  
Mary Baskett  
John W. Beatty  
Mrs. Gary Beck  
Dr. Allen W. Bernard  
Carl Bimel, Jr.  
Mrs. Oliver W. Birckhead  
Mrs. Barbara Boyd  
Charlotte Brooks  
Herbert R. Brown  
Jack E. Brown  
Robert C. Brown  
Carl F. Bryant  
Otto M. Budig, Jr.  
William P. Butler  
Bruce L. Byrnes  
Lee A. Carter  
Mrs. James B. Casey  
Robert H. Castellini  
Paul W. Chellgren  
Paul W. Christensen, Jr.

Mrs. Ruth Clemons-Turner  
A. Burton Closson, Jr.  
Thomas G. Cody  
Mrs. Stanley Cohen  
Mrs. Robert H. Collins  
Robert Conway, Sr.  
Ms. Lois W. Conyers  
Mrs. Thomas M. Cooney  
Tarrence Corbin  
Keith N. Corman  
Mrs. Jerry L. Cowan  
Mrs. James J. Crowe  
Fuheid S. Daoud, M.D.  
Allen L. Davis  
William O. DeWitt, Jr.  
Mrs. J. Gordon Dixon  
William T. Earls, Jr.  
Charles D. Edwards  
Theodore H. Emmerich  
Nancy Coith-Fibbe  
Richard H. Finan  
Michael A. Fisher  
Charles Fleischmann III  
Noah Fleischmann  
Ashley L. Ford  
William A. Friedlander  
Sharon Williams Frisbie  
W. Roger Fry  
Theodore A. Gantz

James J. Gardner  
Mrs. Lewis G. Gatch  
Mrs. Paul E. Geier  
Kevin R. Ghassomian  
Mrs. Jon T. Gimpel  
Mrs. Carolyn O. Goldman  
Stewart Goldman  
Robert D. Gordon  
George C. Hale, M.D.  
Mrs. Judith A. Hanenson  
Tamara Harkavy  
Ms. Consuelo W. Harris  
Robert F. Hartkemeier  
Cornelius W. Hauck  
John W. Hayden  
M. Donald Hayes, DDS  
Mrs. Sara Rowe Heckscher  
Helen K. Heekin  
Sandra Heimann  
L. Thomas Hiltz  
Mrs. Ann Hinckley  
Mrs. Fredrick C. Hirons II  
Mary Jo Holohan  
Hon. Jeffrey P. Hopkins  
Mrs. Roger L. Howe  
Dr. Joan L. Howison  
Earl Hughes  
Charles H. Jackson  
Donald L. Jacobs, M.D.

# CINCINNATI MUSEUM ASSOCIATION SHAREHOLDERS

Rev. Andrew M. Jergens  
Mrs. Robert J. Johannigman  
Mrs. Algernon Johnson  
Mrs. Richard A. Jolson  
Sr. Miriam Kaeser  
Stanley M. Kaplan, M.D.  
Mrs. Michael Karram  
William J. Keating  
Mrs. Alex H. Keller  
Mrs. Patricia King  
Mrs. Gerald Knobloch  
Mrs. Ronald Koettters  
Kenneth Kreines, M.D.  
Lawrence H. Kyte, Jr.  
Ms. Antoinette Laboiteaux  
Polk Laffoon  
A. G. Lafley  
Mrs. Frank Laurens  
Michael W. Lee  
Peter F. Levin  
Carl H. Lindner, Jr.  
Thomas J. Lippert  
Mrs. Bruce C. Long  
Phillip C. Long  
Dr. James L. Mahon  
Mrs. John P. March  
Mrs. Leonard Marek  
James M. Marrs, M.D.  
Timothy L. Mathile

Stewart Shillito Maxwell, Jr.  
Manuel D. Mayerson  
Dr. Ruth Krueger Meyer  
Ralph S. Michael III  
David A. Millett  
Patricia Misrach  
Mrs. James Monroe  
Mrs. Arthur E. Motch, Jr.  
David W. Motch  
Mrs. John C. Mueller, Jr.  
Leo H. Munick, M.D.  
Mrs. Norman A. Murdock  
Ms. Valerie L. Newell  
Mrs. Louis Nippert  
Mrs. John B. Oliver  
Robert B. Ott  
Mrs. Thomas H. Ottenjohn  
John E. Pepper, Jr.  
Mrs. Marjorie F. Perin  
Mrs. Daniel Pfau  
Bradford E. Phillips  
Mrs. Claire B. Phillips  
Ms. Linda Jackson Pointer  
Mrs. Robert J. Portman  
David Reichert  
Mrs. David Reid  
Mercer Reynolds, III  
Mrs. Gates Richards  
Mrs. Gilbert Richards

Ellen Rieveschl  
Mrs. Howard C. Ris  
Lawrence H. Rogers, II  
Millard F. Rogers, Jr.  
Mrs. Edward S. Rosenthal  
Lois Rosenthal  
Richard H. Rosenthal  
Marianne R. Rowe  
Stoddard P. Rowe  
Randy Sandler  
Rhonda Sassoon  
George A. Schaefer, Jr.  
Charles O. Schiff  
John J. Schiff, Jr.  
John J. Schiff, III  
Thomas R. Schiff  
Mrs. William R. Seaman  
Ms. Jewell Lewis Shane  
Thom Shaw  
Richard L. Shenk  
Mrs. John E. Shore  
Gerald T. Silvers  
Andrew D. Smith  
Carl Solway  
Geri Pass Sowell  
Mrs. James E. Stahl, Jr.  
Ronald A. Stahl  
John F. Steele, Sr.  
Jacob K. Stein

# CINCINNATI MUSEUM ASSOCIATION SHAREHOLDERS

Judith K. Stein, M.D.  
John W. (Jack) Steinman  
Joseph S. Stern, Jr.  
Andrew Stillpass  
Mrs. Elizabeth A. Stone  
Mrs. Joan McKelvy Taft  
John W. Tew, Jr., M.D.  
Mrs. Richard Thayer  
Dr. Elmer Thomas  
Morley P. Thompson  
Howard L. Tomb  
Dr. Toan Trinh  
Ms. Sara M. Vance  
Mrs. Christopher F. Virgulak  
J. Philip Vollmer  
Marilyn Scripps Wade  
David W. Warner  
Mrs. David W. Warner  
Mrs. Sidney Weil, Jr.  
Charles Weiner  
Mrs. Joel Weisman  
Mrs. Harris K. Weston  
James S. Widder, M.D.  
John P. Williams, Jr.  
Thomas L. Williams  
William J. Williams  
David A. Wolf  
Mrs. Timothy W. Wolohan  
Owen J. Wrassman

John H. Wulsin, M.D.  
Lucien Wulsin, Jr.  
Robert W. Zapp



Hair-industry icon, the legendary Vidal Sassoon, spoke to a packed house about design influences at the March 2011 special screening of the documentary *Vidal Sassoon: The Movie*.

# **Cincinnati Museum Association Staff**

# FINANCE AND OPERATIONAL AFFAIRS

Debbie Bowman  
Deputy Director, Finance &  
Operational Affairs

## **Administration and Finance**

Megan Buechel  
Carol Edmondson  
Deborah Davis  
Penelope J. Georgetown  
Marilyn Lombardo  
Jennifer West  
Brian Campbell  
Jay Simmons  
Deborah Campbell

## **Museum Gift Shop**

Connie Newman  
Elizabeth Jones  
Aimee S. Pauly  
Jessica Brannock  
Paige Chadwick  
Jenna Wilson

## **Special Events**

Gretchen Mettler  
Meggie King

## **Museum Café**

Amy Goldyn  
Joshua Stamper  
Todd Gwinn  
Elvi Hankins  
Marie Kutt  
Michael Sullivan  
Ene Susi  
Michael Agricola  
Kelly Jo Asbury  
Thomas Craven  
Christy Digiacomio  
Margaret Hughes  
Lisa Hulley  
Rachael Klosterman  
Brendan McGill  
Dustin Moreno  
Deron Roberts  
Andrew Sagel  
Fallon Venable  
Buildings and Grounds  
Harry Geimeier  
Raymond Crousore  
Donald Grace  
Joshua Rectenwald  
Nicholas Ryder  
Robert Stull

## **Facility Support Team**

Cynthia Norris  
Kimberly Asher  
James Betts, Jr.  
James Heideman  
David Nelson

## **Security/Visitor Support Team**

Harry Geimeier  
Colette Lampkin  
Michael Abitz  
Rebecca Babel  
Robert Lee Barker  
Atha Brockell  
Catherine Brummett  
Lawrence Cafazo  
Nancy Carroll  
Lottie Deloris Cavanaugh  
Lonnie Clemmons  
Kim Crawley  
Shirley Crosby  
Jack Dauer  
Tinisha Dawson  
Joseph R. Dennis, Jr.  
Edward Doran, Jr.  
Charles Eckert, III  
Elsie Mae Fink  
Robin L. Fink  
Megan Garza-Mappes



# FINANCE AND OPERATIONAL AFFAIRS

Gary Gilkison  
James Goewey  
William Goodrich  
Cecil Griffin  
Patrick Grimm  
Irina Hall  
Wilbur Hall  
Emmett Hatcher  
Steve Havira  
Blaise Hoffman  
Ashley Jeffries  
Carla Johnson  
David Johnson  
Joseph Kemble  
Edward Kinney  
Bruce Kreidler  
Elmer Kruse  
Kathryn Ludwig  
Roland MacGregor  
Dorothy Mack  
Tamara McGuane  
Carl B. McKenzie, Jr.  
Marshall Mustain  
Ronald Orovitz  
Oakley Porter, Jr.  
Barbara Price  
William Price  
Jordan Rolfes  
James Roush

Robert Scott  
Robert Seifert  
Kimberly Seiter  
Keith Shelanie  
Lorain Shelton  
Rick Sowash  
Christopher Stoops  
Gary Trimble  
Opal Walters  
Jarrod Warf  
Sara Williams  
Evan Wolff  
Cynthia Wright



(above and right) Participants in a naturalization ceremony held at the Cincinnati Art Museum.



# COLLECTIONS

Anita Ellis  
Deputy Director, Collections

## **Curatorial**

Anita Ellis  
James Crump  
Jade Sams  
Kirstie Craven  
Cynthia Amnéus  
Marla Miles  
Julie Aronson  
Anne Buening  
Regina Palm  
Amy Dehan  
Marissa Hershon  
Jéssica Flores García  
Benedict Leca  
Glenn Markoe  
Kristin Spangenberg  
Leslie Wagner  
Hou-mei Sung  
Registration  
Matthew Leininger  
Carola Bell  
Lisa DeLong  
Jennifer Eckman  
Jay Pattison

## **Conservation**

Per Knutas  
Megan J. Emery  
Daniela Leonard  
Cecile Mear  
Ashley Standera

## **Library**

Galina Lewandowicz  
Jennifer Hardin  
Alita Vogel

# INSTITUTIONAL ADVANCEMENT

## **Institutional Advancement**

David W. Linnenberg

Deputy Director, Institutional Advancement

## **Development**

David W. Linnenberg

Claire Creedmore

Alexandra Eichler

Stephen R. Hegge

Lauren McMillan

Tiffany Payne-Bush

Christina Pfeffer

Emily Rose

Christopher Woodside

## **Marketing & Communications**

Regina Russo

Lauren McMillan



Cincinnati Art Museum staff marching in the Cincinnati Reds Opening Day Parade.

# PRESENTATION

## **Visitor & Member Services**

Amy Burke  
Robert A. Farrell, Jr.  
Constantina Dendramis  
Kristin Dugas  
Amy Dunham  
Rita Gray  
Patricia Kate Hamilton  
Betty L. Hensellek  
Marybeth McIntyre  
Jordan Menefield  
Deborah Pope-Bullocks  
Trevia Rice  
Lena Talbott

## **Learning & Interpretation**

Emily Holtrop  
Director of Learning & Interpretation

## **Learning & Interpretation**

Emily Holtrop  
Carrie Atkins Maras  
Amy Briggs  
Marion Cosgrove Rauch  
Anna Hope Curwood  
Kristine Donnelly  
Christine Dumas  
Nicole Kroger

Megan McCarthy  
Lee Snow

## **Exhibitions**

Susan Hudson

## **Exhibition Design & Installation**

Christopher Williams  
Kimberly Flora  
Michael Hancock  
Alexander James  
Everage King  
Sandy James  
Eli Meiners  
James Smith

## **Design and Dissemination**

Scott Hisey  
Director of Design and Dissemination

## **Design and Dissemination**

Scott Hisey  
Andrea Chesney  
Kyle Cooper  
Mark Gilsdorf

## **Photo Services**

Rob Deslongchamps  
Jonathan Nolting

## **Director's Office**

Aaron Betsky  
Director

## **Director's Office**

Aaron Betsky  
Terrie Benjamin

## **Human Resources**

Jennifer Hart  
Rebecca Cooke-Vidourek

# SENIOR STAFF

Aaron Betsky  
Director

Harry Geimeier  
Director of Facilities Services

Debbie Bowman  
Deputy Director, Finance &  
Operational Affairs

Scott Hisey  
Director of Design and Dissemination

Anita Ellis  
Deputy Director, Collections

Emily Holtrop  
Director of Learning & Interpretation

David W. Linnenberg  
Deputy Director, Institutional Advancement

Matthew Leininger  
Chief Registrar

James Crump  
Chief Curator

Regina Russo  
Director of Marketing & Communications

Carol Edmondson  
Director of Finance

# FINANCIALS



# CINCINNATI ART MUSEUM BALANCE SHEET

as of August 31, 2010

	Unrestricted			Temporarily Restricted	Permanently Restricted	Combined
	General Operating	Board Designated	Art and Plant		Endowment Funds	Totals FY09-10
<b>Assets</b>						
Current Assets	2,283,788	(1,759,563)		6,776,661	4,286,015	11,586,901
Prepaid Expenses	15,089					15,089
Construction in Progress	7,259			7,500		14,759
Buildings and Equipment, net			11,204,601			11,204,601
Cash Surrender Value of Life Insurance			226,120			226,120
Investments		10,136,362		31,893,872	16,102,365	58,132,599
Beneficial Interest in Perpetual Trust					12,345,495	12,345,495
Pledges Receivable, Net of Current Portion		860,471		575,590	582,617	2,018,678
Art Objects			1			1
<b>Total Assets</b>	<b>2,306,136</b>	<b>9,237,270</b>	<b>11,430,722</b>	<b>39,253,623</b>	<b>33,316,492</b>	<b>95,544,243</b>

## Liabilities and Net Assets

<b>Current Liabilities</b>						
Accounts Payable	500,318			7,750		508,068
Accrued Expenses	789,018					789,018
Deferred Contributions Received						0
<b>Total Current Liabilities</b>	<b>1,289,336</b>	<b>0</b>	<b>0</b>	<b>7,750</b>	<b>0</b>	<b>1,297,086</b>
Non-Current Liabilities		206,832		804,134	59,867	1,070,833
<b>Net Assets</b>	<b>1,016,800</b>	<b>9,030,438</b>	<b>11,430,722</b>	<b>38,441,739</b>	<b>33,256,625</b>	<b>93,176,324</b>
<b>Total Liabilities and Net Assets</b>	<b>2,306,136</b>	<b>9,237,270</b>	<b>11,430,722</b>	<b>39,253,623</b>	<b>33,316,492</b>	<b>95,544,243</b>

# CINCINNATI ART MUSEUM INCOME STATEMENT ALL FUNDS

as of August 31, 2010

	Unrestricted			Temporarily Restricted	Permanently Restricted	Total
	General Operating	Board Designated	Art and Plant	Restricted	Endowment Funds	
Revenue and Support	7,809,438	(3,020)	106,933	3,268,426	3,608	11,185,385
Net Assets Released From Restrictions	2,695,114	12,708	1,157,838	(3,841,292)	(24,368)	
<b>Total Revenue, Support, and Reclassifications</b>	<b>10,504,552</b>	<b>9,688</b>	<b>1,264,771</b>	<b>(572,866)</b>	<b>(20,760)</b>	<b>11,185,385</b>
Expenses	10,939,527		2,743,655			13,683,182
Excess (Deficit) of Revenue, Support, and Reclassification over Expenses	(434,975)	9,688	(1,478,884)	(572,866)	(20,760)	(2,497,797)
Interfund Transfers	431,568	(675,881)	244,313			
Loss on Disposal of Fixed Assets						
Capital Additions		73,732			33,258	106,990
Pooled Income Fund, Charitable Remainder Trust, and Charitable Gift Annuity Evaluation		(16,167)		10,945	(20,229)	(25,451)
Realized Gain on Investments	4,342	(619,084)		(2,920,492)	3,598	(3,531,636)
Unrealized Gain (Loss) on Investments		909,759		4,302,138	4,016	5,215,913
Excess Gain on Endowment Investments		121,847		(121,847)		
Change in Beneficial Interest in Perpetual Trust					(12,910)	(12,910)
<b>Change in Net Assets</b>	<b>935</b>	<b>(196,106)</b>	<b>(1,234,571)</b>	<b>697,878</b>	<b>(13,027)</b>	<b>(744,891)</b>
Net Assets at Beginning of Year As Restated	1,015,865	9,226,544	12,665,293	37,743,861	33,269,652	107,390,895
Net Assets at End of Year	1,016,800	9,030,438	11,430,722	38,441,739	33,256,625	93,176,324

# CINCINNATI ART MUSEUM STATEMENT OF FUNCTIONAL EXPENSES

as of August 31, 2010

Expense	TOTAL	PROGRAM SERVICES	MANAGEMENT & GENERAL	MEMBERSHIP DEVELOPMENT	FUNDRAISING	ACCESSION of ART
Personnel	5,035,422	3,269,909	1,249,995	51,400	464,118	
Payroll Taxes	356,531	238,941	81,050	3,846	32,694	
Pension	96,497	59,720	22,324	4,624	9,829	
Employee Benefits	491,588	307,795	146,667	4,750	32,376	
<b>Total Personnel</b>	<b>5,980,038</b>	<b>3,876,365</b>	<b>1,500,036</b>	<b>64,620</b>	<b>539,017</b>	<b>0</b>
Utilities	775,101	619,383	150,531	5,187		
Telephone	60,236	35,138	17,290	7,808		
Insurance	181,916	158,127	23,009	780		
Supplies	219,082	167,510	45,082	2,226	4,264	
Books, Periodicals	35,454	19,670	1,285	2	14,497	
Professional Services	501,048	293,559	161,912	426	45,151	
Repairs, Maint, Other Exp	235,524	112,495	122,099	930		
Service Contracts	173,034	107,479	41,785	904	22,866	
Volunteer Events & Other Exp	45,915				45,915	
Project Expenses	104,083	71,542	1,588	22	30,931	
Honoraria	43,969	43,969				
Memberships and Dues	39,517	7,900	30,385	12	1,220	
Hospitality	67,034	38,901	18,999	23	9,111	
Special Events	200,203	38,942	25,925	961	134,375	
Professional Development	63,366	44,352	18,994	20		
Advertising & Promotion	130,165	112,910	13,479	152	3,624	
Shipping, Postage and Exhibition Fees	560,210	529,398	(25,187)	28,107	27,892	
Installation and Framing	313,933	312,985			948	
Photography	27,838	27,838				
Print/Typesetting	276,624	178,617	7,822	22,565	67,620	
Design	0					
Café Cost of Goods sold	158,217		158,217			
Merchandise (Shop/Publications)	690,164		690,164			
Miscellaneous	77,735	27,123	33,647	5,993	10,972	
Art Purchases	1,215,715					1,215,715
Depreciation	1,499,201		1,499,201			
Bad Debt Expense	3,476		(645)		4,121	
Interest	0					
Banking & Custodial Fees	4,384		4,384			
Facility Master Plan	0					
<b>Total Expenses</b>	<b>13,683,182</b>	<b>6,824,203</b>	<b>4,540,002</b>	<b>140,738</b>	<b>962,524</b>	<b>1,215,715</b>