

# ROLE MODEL CARD

AN ART PROJECT THAT RECOGNIZES AN IMPORTANT FEMALE IN THE STUDENT'S LIFE AND CELEBRATES WOMEN'S HISTORY MONTH

Inspired by the books: *Every-Day Dress-Up* and *My Name is Not Isabella*

Grades: Pre K - 2nd



The front and interior of some of the Role Model Cards

## OBJECTIVES/OUTCOMES

- Students will learn about significant women in history and their many accomplishments.
- Students will be able to reflect on the role that a special female plays in their lives.
- Students will communicate their feelings of admiration through art making and writing.

## DESCRIPTION OF ACTIVITY/CONCEPT

This project enables students to combine reflection, writing, and art making into one project. The related resources (included below) inform students about some of the historical contributions women have made over time. Students are able to think about the role that strong women have played in their own lives and create a large card for a special female role model. The students are given a variety of materials to encourage artistic freedom and create a card as unique as the women they admire.

## MATERIALS

Sturdy 11x17" paper, colored foam stickers, magazines, scissors, glue sticks, markers, and crayons.

## VOCABULARY

Women's History Month – an annually declared month that highlights the contributions of women to events in history and contemporary society; the United States celebrates during the month of March

Role Model – a person looked to by others as an example to be imitated

Admire – to regard (a person, object, or quality) with respect or warm approval

## PROCEDURE

Pre-class Prep

1. Create a card template that recognizes and thanks someone for being a strong female role model. (Example template is on Page 4). *Students may help with this step.*
2. Print a card for each of the students.

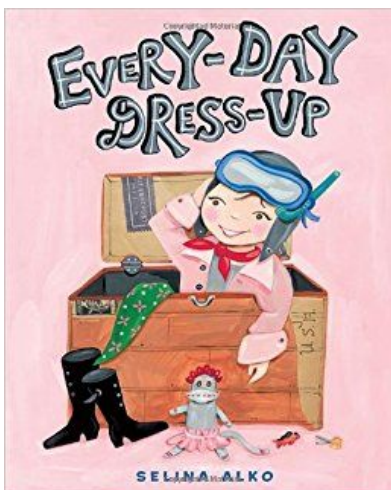
### Class Procedure

3. Students fold their pieces of paper in half short ways, with the message on the inside.
4. Students decorate the front of the cards with markers, crayons, foam stickers, and magazine clippings, possibly drawing a portrait of that role model.
5. Students write the reasons they admire the role model on the inside of the card and sign their names.
6. Students give the cards to a female in their lives that they admire.

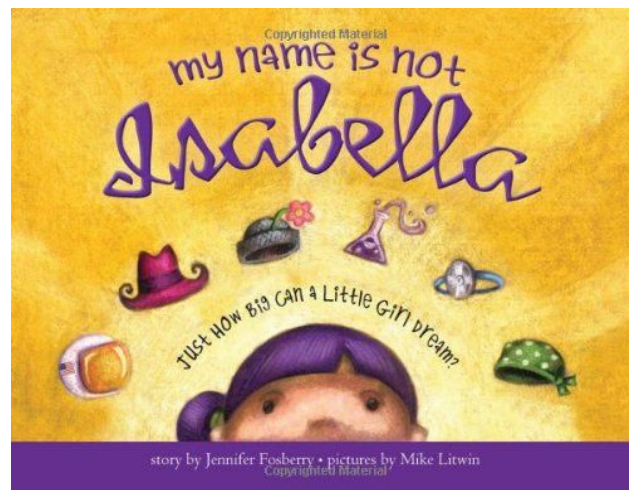


### RELATED RESOURCES/ADDITIONAL ACTIVITIES

Use these books to guide the lesson and add more meaning to the students' artmaking.



*Every-Day Dress-Up*  
Selina Alko



*My Name is Not Isabella*  
Jennifer Fosberry

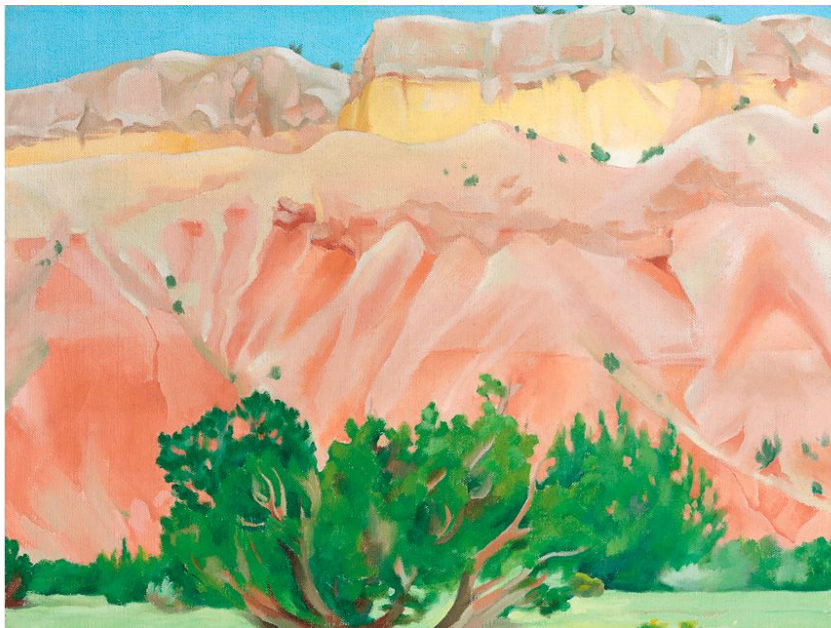
Incorporate these additional learning activities to enhance the lesson.

The American Sign Language sign for woman:

The American Sign Language sign for girl:



Come to the Cincinnati Art Museum to see a work by Georgia O’Keeffe (who is mentioned in *Every-Day Dress-Up*):



Georgia O’Keeffe (1887–1986), *My Back Yard*, 1943, oil on canvas, Museum Purchase: The Edwin and Virginia Irwin Memorial, Fanny Bryce Lehmer Endowment, Bequest of Mr. and Mrs. Walter J. Wichgar, John J. Emery Endowment, Mr. and Mrs. Harry S. Leyman Endowment, and Rieveschl Collection Fund, 2013. 51. ©2016 Georgia O’Keeffe Museum / Artists Rights Society (ARS), New York

**I admire you because:**

- 1.**
- 2.**
- 3.**

**Thank you for being a strong  
female role model!**

**Love,**