

Design and color a new outfit for Ann Ford (based on the painting by Thomas Gainsborough).



Sensory Saturday

September 26, 2020

Welcome to Sensory Saturday! This morning we will use our senses to explore artworks around the museum. Because of COVID-19, we are practicing social distancing, extra cleaning and mask wearing. Inside this map you will see learning centers indicated. At each learning center there will be a bin of brown bags labeled “ready to play”. Each child will take one, use it to engage with art in that gallery, then place the bag in a bin marked “used” materials.

For hands-on art-making, visit our Rosenthal Education Center. If you need a quiet space, go to Gallery 116. You are welcome to visit the *Hank Willis Thomas: All Things Being Equal...* exhibition in galleries 232-233, and 223, but please be aware that there may be triggering images as well as loud noises in these galleries. The whole museum is open and free this morning. At 11:00 a.m., it opens to the general public. The hands-on learning centers will be set up until 11:30.

Before we go to the museum, let’s learn about the rules. Here is what we need to remember.



Keep our hands at our sides. We do not touch the artwork, the walls or the cases.



A gallery attendant may ask us not to touch the art.



Stay with our group.



Buy a ticket at the Visitor Services desk if we want to see a special exhibition.



We do not eat, drink or chew gum in the galleries.



If we need a fidget or sensory headphones, we can pick them up in the Rosenthal Education Center (REC) or at the Visitor Services desk. We will return them when we are finished.



Let the security guard look through our bag. They may ask us to put it in the coat room. We will get our belongings back when we leave the museum.



Walk slowly in the museum. We do not run in the galleries.



Only use pencils and paper in the galleries.



We do not take photographs when we see this icon.



Use a quiet voice. We do not yell in the galleries.

G107

Change the Colors: First pick up a set of colored filters, then look through them at the art around you.

What is the Art Made of? First pick a texture from the plastic bag, then look to see what art is made from that material.

Cincinnati Gallery Scavenger Hunt: First pick an image, then find that object in the gallery.



a wooden deer



a hot air balloon

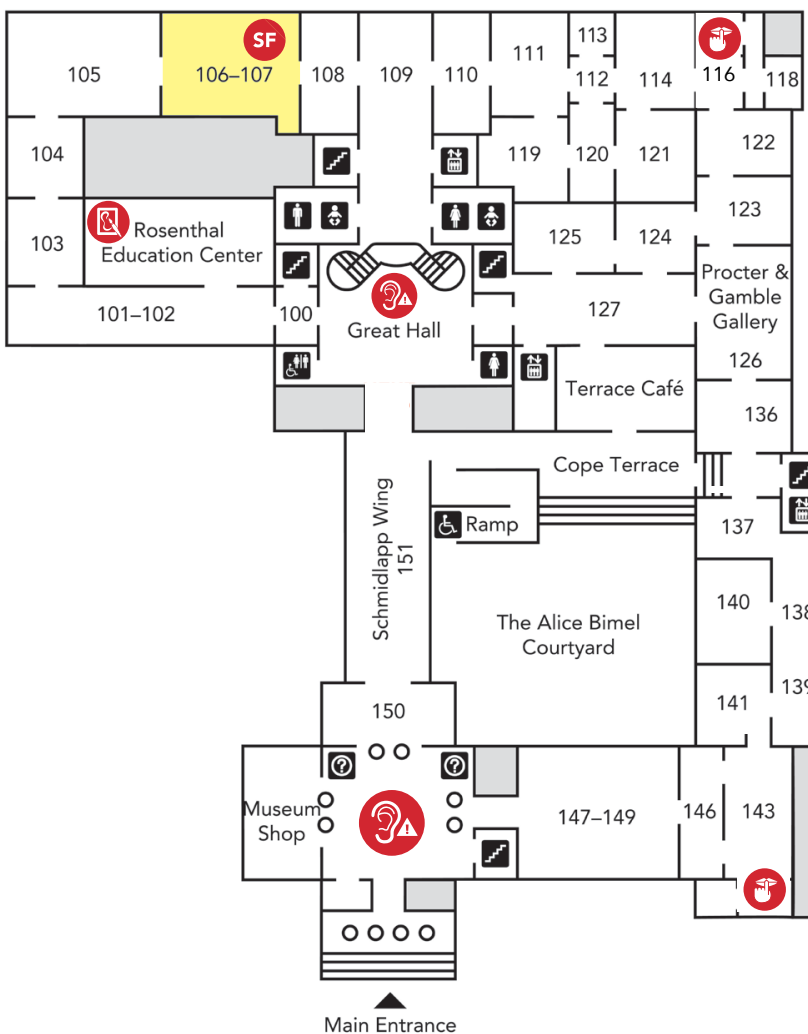


2 angels



the moon

1ST FLOOR



**Dedicated Quiet Space
Gallery 116**

Icon Key



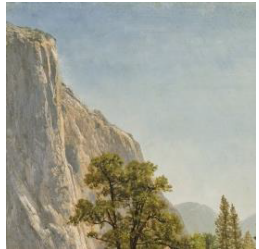
How was your visit? Please email access@cincyart.org to share your feedback and receive emails about future programs.

G217

How Does It Smell? First smell the scents, then think about where you might smell them.

Feeling Nature Textures: First pick a texture from the plastic bag, then look for that texture in the paintings.

Finding Nature Scavenger Hunt: First pick an image, then find that object in the gallery.



mountains



a waterfall

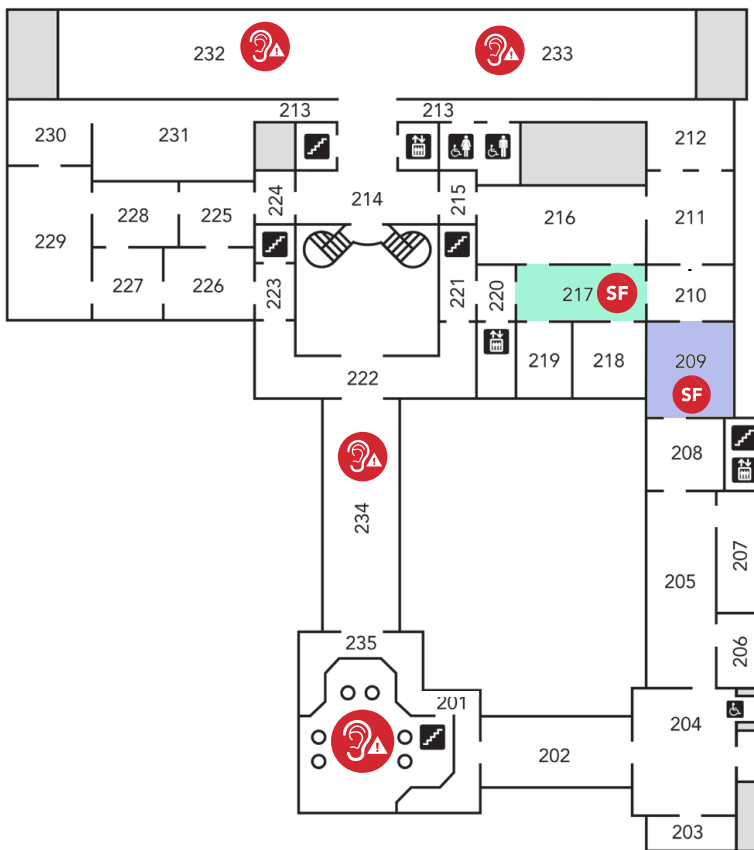


dark clouds



a dog

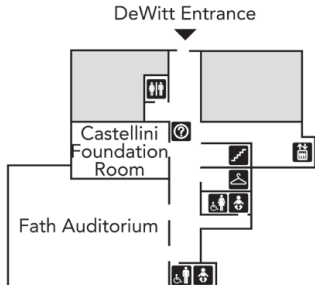
2ND FLOOR



3RD FLOOR



GROUND FLOOR



G209

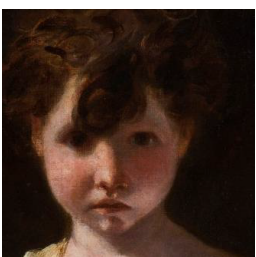
Coloring Sheet: First take the colored pencils to the table, then color the portrait on the back of this page

What Are They Wearing? First pick a texture from the plastic bag, then look for it in the paintings.

Finding Faces Scavenger Hunt: First pick an image, then find that face in the gallery.



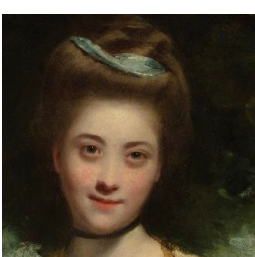
A baby face



a sad face



a serious face



a smiling face