

## Find 10 Differences

Circle the differences you see between this picture and the actual artwork, *Deli- Going to Lunch* by Emily Brock in Gallery 222?



- Answer Key**
1. green meat in case
  2. cheese on scale
  3. missing salt and pepper shaker on table
  4. fork on table
  5. one hanging sausage is extra long
  6. glass mouse near ceiling
  7. Blondie album behind display case
  8. checker on floor
  9. money on counter
  10. "Baked Goose" on sign

## Sensory Saturday

October 24, 2020

**Welcome** to Sensory Saturday! This morning we will use our senses to explore artworks around the museum. Because of COVID-19, we are practicing social distancing, extra cleaning and mask wearing. Inside this map you will see learning centers indicated. As families enter, they will receive a map that designates galleries with learning centers with instructions on the back. At the front desk families will borrow a sanitized bag of hands on tools to enjoy in the marked galleries. Volunteers will be in the marked galleries to help families engage with art in that gallery. At the end of their visit, families will exchange their borrowed bag for a take away bag.

For hands-on art-making, visit our Rosenthal Education Center. If you need a quiet space, go to Gallery 116. You are welcome to visit the *Hank Willis Thomas: All Things Being Equal...* exhibition in galleries 232-233, and 223, but please be aware that there may be triggering images as well as loud noises in these galleries. The whole museum is open and free this morning for you. At 11:00 a.m., it opens to the general public. The hands-on learning centers will be set up until 11:30.

Before we go to the museum, let's learn about the rules. Here is what we need to remember.



Keep our hands at our sides. We do not touch the artwork, the walls or the cases.



A gallery attendant may ask us not to touch the art.



Stay with our group.



Buy a ticket at the Visitor Services desk if we want to see a special exhibition.



We do not eat, drink or chew gum in the galleries.



If we need a fidget or sensory headphones, we can pick them up in the Rosenthal Education Center (REC) or at the Visitor Services desk. We will return them when we are finished.



Let the security guard look through our bag. They may ask us to put it in the coat room. We will get our belongings back when we leave the museum.



Walk slowly in the museum. We do not run in the galleries.



Only use pencils and paper in the galleries.



We do not take photographs when we see this icon.



Use a quiet voice. We do not yell in the galleries.

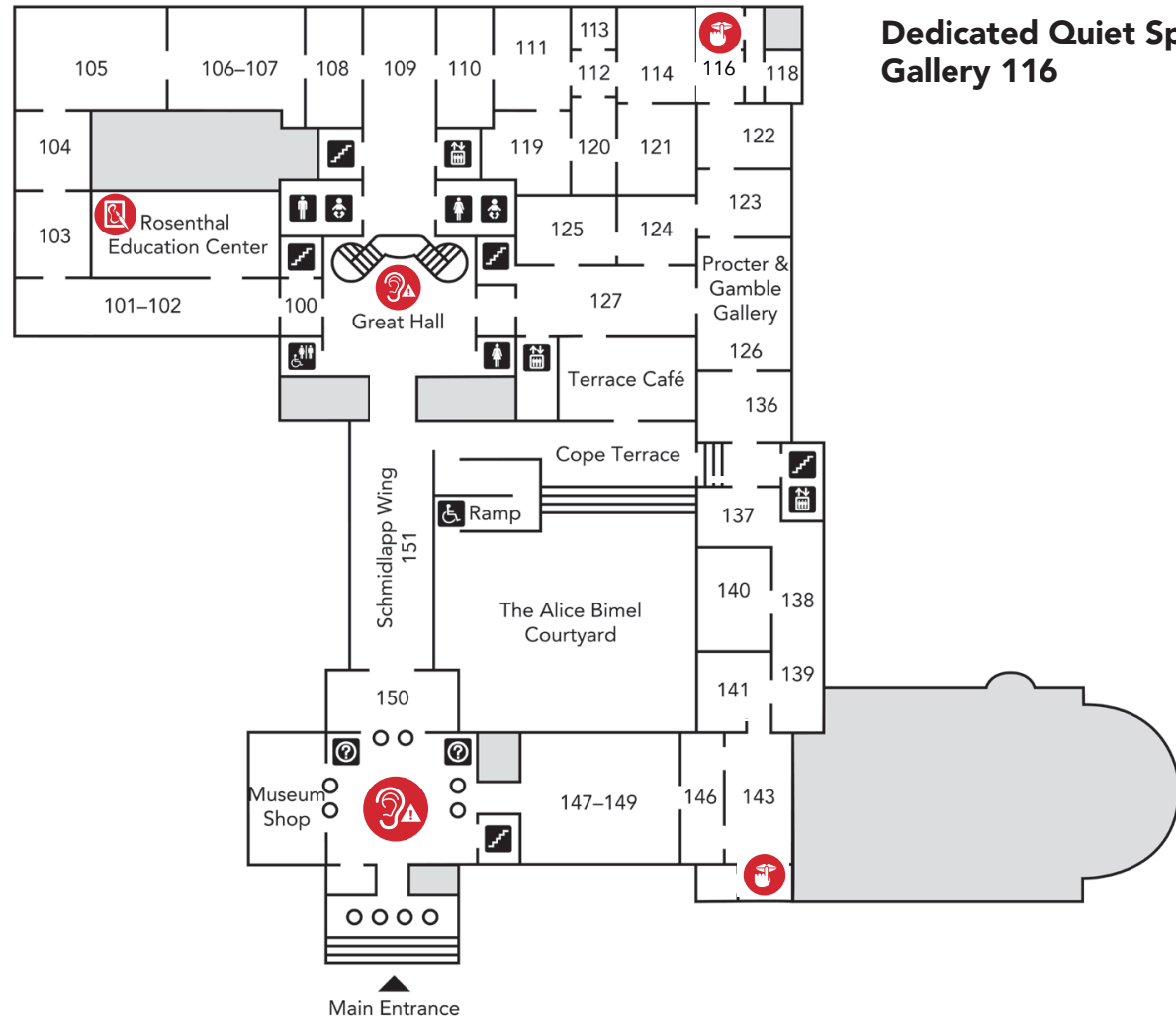


# Icon Key

Sensory Friendly	Loud Area	Quiet Area	Make Art

How was your visit? Please email [access@cincyart.org](mailto:access@cincyart.org) to share your feedback and receive emails about future programs.

## 1<sup>ST</sup> FLOOR



## G227

**Kaleidoscope:** First take the mini kaleidoscope, then see how it changes the art.

**What is it made of?** First pick a texture from the plastic bag labelled G227, then see if you can find artwork made from these items.

**Scavenger Hunt:** First pick an image, then find that object in the gallery.



an angel

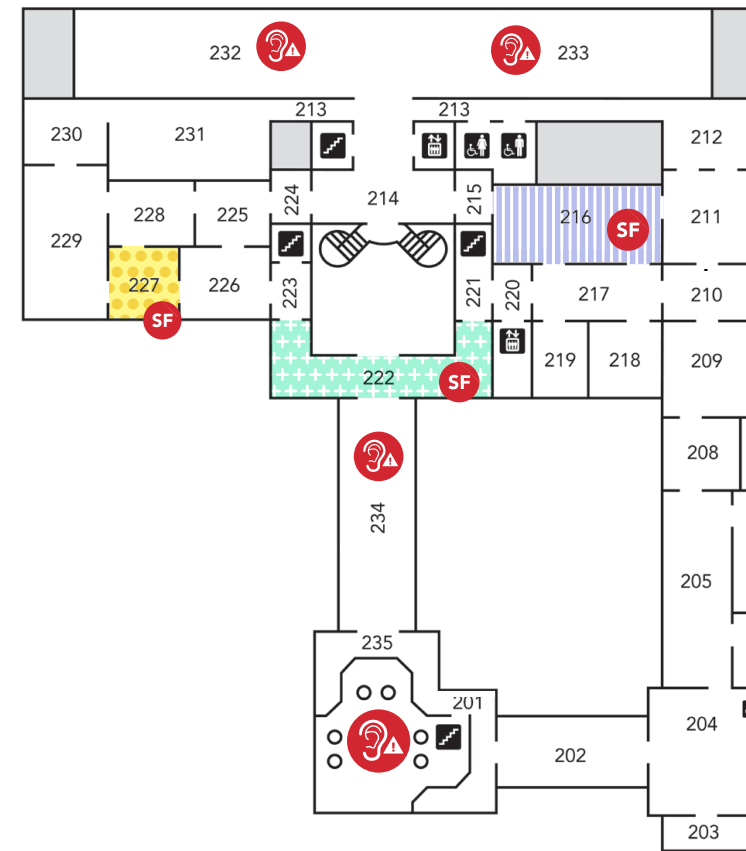
a forest

a house

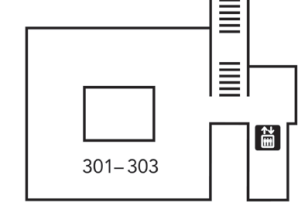
a bridge

a sunset

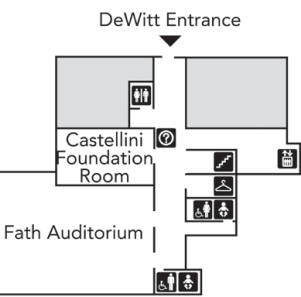
## 2<sup>ND</sup> FLOOR



## 3<sup>RD</sup> FLOOR



## GROUND FLOOR



## G222

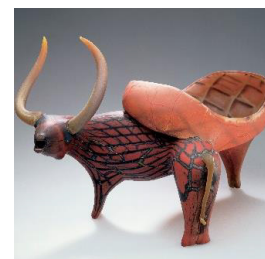
**Spot the difference:** First, go to the table and compare the artwork in the gallery to the picture on the back of the page, then circle what's different using the pencil in your bag.

**What is it made of?** First pick a texture from the plastic bag labelled G222, then see if you can find artwork made from these items.

**Scavenger Hunt:** First pick an image, then find that object in the gallery.



a blue vase



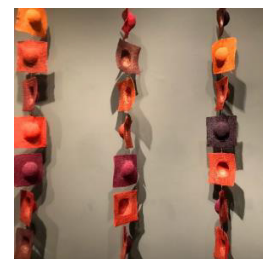
a bull



a skull



a duck



orange squares

## G216

**Change the Colors:** First get the colored filters from the G216 bag, then look at the art through them.

**What is in the art?** First pick a texture from the plastic bag labelled G216, then see if you can find these items in the artwork

**Scavenger Hunt:** First pick an image, then find that object in the gallery.



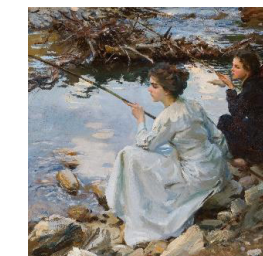
a boat



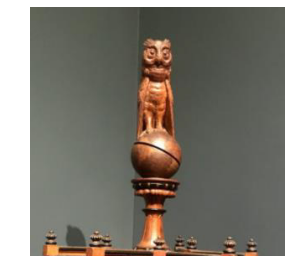
fall trees



a dog



fishing poles



an owl