

Explore Online

Discover works currently off view at cincinnatiartmuseum.org/collection and search by the artwork’s title.

Chiyo Mitsuhsa



Chiyo Mitsuhsa (active early 17th century), Japan, *Presentation of a Prince*, early 17th century, color and gold leaf on paper, The Thoms Collection; Given by Mrs. Murat H. Davidson in Honor of her Grandfather, Joseph C. Thoms, 1982.6

CAM Look: <http://bit.ly/MitsuhsaPresentation>
CAM Look: <http://bit.ly/MitsuhsaPrince>

Jeanne Lanvin



Jeanne Lanvin (1867–1946), France, *Evening Dress and Hoop*, 1927, silk, Gift of Mrs. Raymond M. Lull, 1976.206a–b

Germaine Krull



Germaine Krull (1897–1985), France, born Prussia, *untitled [elevator components, Eiffel Tower]*, from the portfolio, *Métal*, 1928, collotype (photomechanical print), Library Transfer, 2019.298.23, © Estate Germaine Krull, Museum Folkwang, Essen

Online content: bit.ly/GermaineKrullMetal

Hōen Taira Yoshiteru



Hōen Taira Yoshiteru (active late 19th century), Japan, *Amaterasu*, late 19th century, hanging scroll: ink and color on silk, Gift of Jeanann Gray Dunlap, 2004.1130

Elizabeth Catlett



Elizabeth Catlett (1915–2012), United States, *Harriet*, 1975, linoleum cut, The Albert P. Strietmann Collection, 1999.175, © Catlett Mora Family Trust/Licensed by VAGA at Artists Rights Society (ARS), NY

Nancy Rexroth



Nancy Rexroth (b. 1946), United States, *Brushing Teeth, My Mother's Bedroom, Arlington, Virginia*, 1969, gelatin silver print, The Nancy Rexroth Collection: Museum Purchase with funds provided by FotoFocus Art Purchase Fund, 2019.262, © The 1988 Rexroth Family Trust

Online content: cincinnatiartmuseum.org/rexroth

Kate R. Cregmile



Kate R. Cregmile (active 1891–1923), United States (Cincinnati), *Evening Dress: Bodice and Skirt*, 1900–02, silk, linen, Gift of Betty Fleischmann Holmes, 1920.123a–b

Oda Mayumi



Oda Mayumi (b. 1941), Japan, *Wind Goddess*, 1970, color screen print, The Howard and Caroline Porter Collection, 1984.279, © Mayumi Oda/Licensed by VAGA at Artists Rights Society (ARS), NY

cincinnati art museum

Collection Highlights:

Works by Women Artists at the Cincinnati Art Museum

Explore works by artists who identify as female in the Cincinnati Art Museum's permanent collection with this self-guided tour through our galleries.

Using your own smartphone or tablet, enjoy commentary by museum staff and volunteers about select artworks on view. Please use earphones while viewing videos in the museum.

The museum is actively collecting artwork by women artists across all media. Many of these are light-sensitive works, which for their preservation are rotated on and off display.

If you want to dig deeper into works by artists who identify as female, visit cincinnatiartmuseum.org/collection and search by the artist’s name.

Deborah Butterfield



Gallery 105—First Floor

Deborah Butterfield (b. 1949), United States, *Horse No. 1*, 1983, red mud, sticks, metal armature, Henry Meis Endowment and various funds, 1984.94, © Deborah Butterfield/Licensed by VAGA, New York, NY

Adelaide Nourse Pitman and Elizabeth Nourse



Gallery 111—First Floor

Bedstead, 1882–83, Benn Pitman (1822–1910), designer, Adelaide Nourse Pitman (1859–1893), carver, Elizabeth Nourse (1859–1938), painter, United States (Cincinnati), American black walnut and painted panels, Gift of Mary Jane Hamilton in memory of her mother Mary Luella Hamilton, made possible through Rita S. Hudepohl, Guardian, 1994.61

CAM Look: bit.ly/PitmanBed

Elizabeth Nourse



Gallery 119—First Floor

Elizabeth Nourse (1859–1938), Unites States, *A Mother (Une mère)*, 1888, oil on canvas, Gift of The Procter & Gamble Company, 2003.93

CAM Look: bit.ly/NourseMother

Processional Image of Sri Devi



Gallery 151—First Floor

Processional Image of Sri Devi, late 10th–early 11th century, Chola Dynasty, Tamil Nadu/India, bronze, Alice Bimel Endowment for Asian Art, 2017.55

Katharina van Hemessen



Gallery 204—Second Floor

Jan van Hemessen (circa 1500–1556/1557), Katharina van Hemessen (b. 1527), The Netherlands, *Altarpiece with Scenes from the Old and New Testaments (the Tendila Retablo)*, 1550s, oil on panel, Fanny Bryce Lehmer and John J. Emery Endowments, 1953.219

CAM Look: bit.ly/VanHemessenRetablo

Elisabeth Louise Vigée Lebrun



Gallery 207—Second Floor

Elisabeth Louise Vigée Lebrun (1755–1842), France, *Portrait of a Young Woman Playing a Lyre*, late 1780s, oil on canvas, Gift of Emilie L. Heine in memory of Mr. and Mrs. John Hauck, 1940.981

Elizabeth Catlett



Gallery 211—Second Floor

Elizabeth Catlett (1915–2012), United States, *Phillis Wheatley*, bronze, 1973, Museum Purchase: Dr. Sandy Courter Memorial Fund, Lawrence Archer Wachs Fund, A. J. Howe Endowment, Henry Meis Endowment, Phyllis H. Thayer Purchase Fund, Israel and Caroline Wilson Fund, On to the Second Century Endowment, 1999.215, © Catlett Mora Family Trust/Licensed by VAGA at Artists Rights Society (ARS), NY

CAM Look: bit.ly/CatlettWheatley

Georgia O’Keeffe



Gallery 211—Second Floor

Georgia O’Keeffe (1887–1986), United States, *My Back Yard*, 1943, oil on canvas, Museum Purchase: The Edwin and Virginia Irwin Memorial, Fanny Bryce Lehmer Endowment, Bequest of Mr. and Mrs. Walter J. Wichgar, John J. Emery Endowment, Mr. and Mrs. Harry S. Leyman Endowment, and Rieveschl Collection Fund, 2013.51, © 2018 Georgia O’Keeffe Museum / Artists Rights Society (ARS), New York

CAM Look: bit.ly/OkeeffeBackyard

Mary Cassatt



Gallery 216—Second Floor

Mary Cassatt (1844–1926), United States, active France, *Baby in Dark Blue Suit, Looking Over His Mother's Shoulder*, circa 1889, oil on canvas, John J. Emery Fund, 1928.222

CAM Look: <http://bit.ly/CassattBaby>

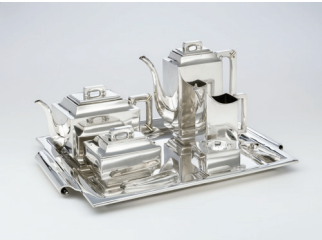
Sophie Guillemard



Gallery 225—Second Floor

Sophie Guillemard (active 1801–1819), France, *Portrait of a Young Lady Distracted from Her Music Lesson*, 1801, oil on canvas, John J. Emery Fund, 1917.369

Emmy Roth



Gallery 228—Second Floor

Tea and Coffee Service (7 piece), circa 1930, Emmy Roth (1885–1942), Germany, silver and ivory, Museum Purchase: Decorative Arts Deaccession Fund and Cincinnati Art Museum Women's Committee, 2017.62a–g

Louise Nevelson



Gallery 230—Second Floor

Louise Nevelson (1899–1988), United States, *Nightscape III*, 1974, wood, Museum Purchase with the aid of funds from the Cincinnati Art Museum Women's Committee, Pogue's and the National Endowment for the Arts, 1975.264, © 2016 Estate of Louise Nevelson / Artists Rights Society (ARS), New York

CAM Look: bit.ly/NevelsonNightscape

Helen Frankenthaler

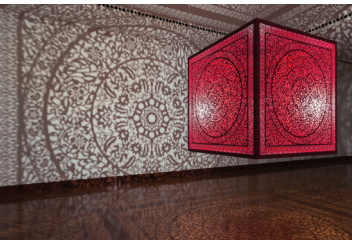


Gallery 231—Second Floor

Helen Frankenthaler (1928–2011), United States, *Rock Pond*, 1962–63, acrylic on canvas, The Edwin and Virginia Irwin Memorial, 1969.11, © 2016 Helen Frankenthaler Foundation, Inc. / Artists Rights Society (ARS), NY

CAM Look: bit.ly/FrankenthalerRockPond

Anila Quayyum Agha



Gallery 234—Second Floor

On view through May 30, 2021

Anila Quayyum Agha (b. 1965), Pakistan and United States, *All the Flowers Are for Me (Red)*, 2016, laser-cut lacquered stainless steel and bulb, Museum Purchase: Alice Bimel Endowment for Asian Art, 2017.7, © Anila Quayyum Agha, 2016

CAM Look: bit.ly/AghaFlowers

