

Cincinnati Art Museum

**MyCAM**

Amazing ArtVenture  
Family Art Hunt





# **Color, Line, Shape, Texture & Form**

The elements that make all art amazing.

Join us for this Amazing ArtVenture  
and explore what makes art so awesome.

Grab some paper, a pencil and your imagination and have fun!



# Curious Colors

Are you ready to explore all the colors  
of our rad rainbow?



*Dancers sway in a landscape of primary and secondary colors.*

## ACTIVITY:

Ferdinand Hodler believed in showing your feelings through gestures.

Take turns creating gestures to express your emotions.

Snap a picture and share at #MyCAMArtHunt



Ferdinand Hodler (1853-1918), Switzerland, *The Sacred Hour*, circa 1907-circa 1911, oil on canvas, The Edwin and Virginia Irwin Memorial, Fanny Bryce Lehmer Endowment, Mr. and Mrs. Harry S. Leyman Endowment; and Museum Purchase: Gift of Mary Hanna, Mrs. J. Louis Ransohoff, and Mary E. Johnston, by exchange, 1990.1294

## LOOK AGAIN:

The artist felt that the inner nature of humanity is best shown through repeating patterns.

How did he show that in this work?



*Red, yellow and green collide in this polychrome portrait.*

## ACTIVITY:

Alexej von Jawlensky used bold lines and bright colors to show feeling.

How do you think the colors represent how she is feeling?



Alexej von Jawlensky (1864/1867-1941), Russia, *Seated Woman*, 1911, oil on composition board, Fanny Bryce Lehmer Endowment, 1975.73

## LOOK AGAIN:

Jawlensky was part of a group of artists called the "Blaue Reiter" or Blue Rider.

Why do you think they used this name?

*Green, blue, yellow and Cincinnati Red - Pete is on repeat in all the colors of the rainbow.*

## ACTIVITY:

Andy Warhol made this colorful series of portraits to look like baseball cards.

Draw your own baseball card in his style.



Andy Warhol (1928-1987), United States, *Pete Rose*, 1985, acrylic on canvas with silkscreen image, Museum Purchase: Bequest of Mr. and Mrs. Walter J. Wichgar, 1985.208a-d

## LOOK AGAIN:

Warhol liked to paint pictures of celebrities like Pete Rose.

If he was still alive today, what celebrity should he paint?



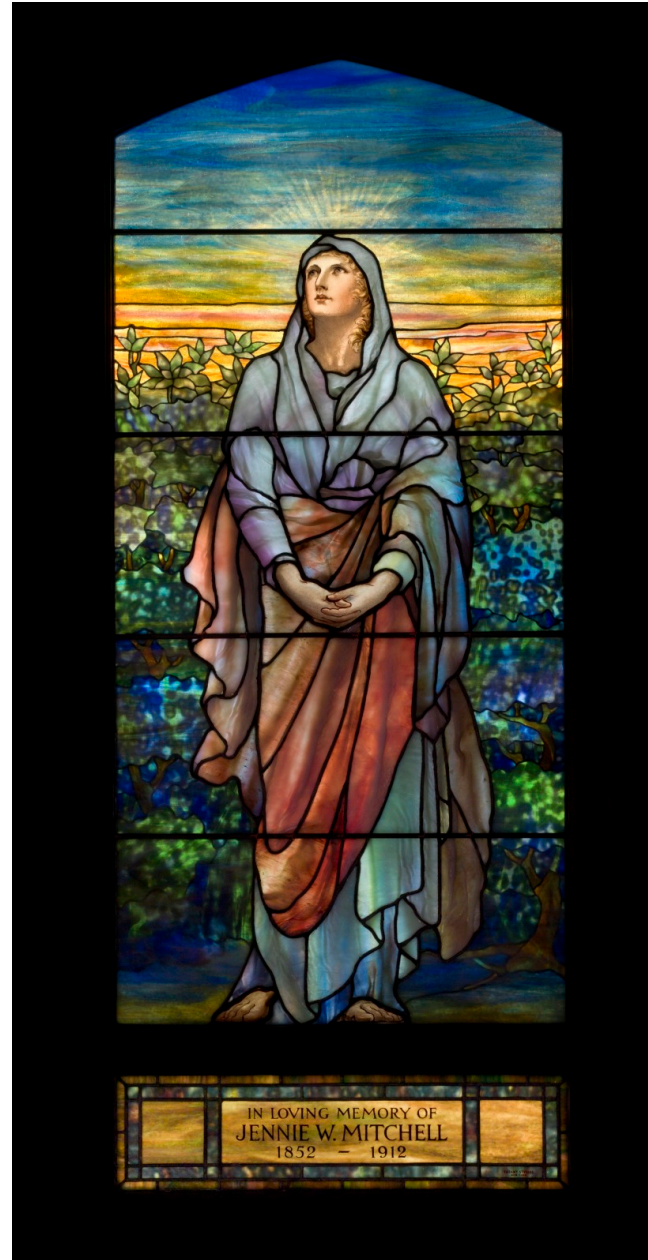
*A glorious glow from a wondrous window.*

## ACTIVITY:

The colors in this window are made by layering pieces of glass.

What colors would you mix to make different areas of this window?

*Jennie W. Mitchell Memorial Window*, circa 1900, Tiffany Glass & Decorating Co. (estab. 1900, closed 1932), manufactory, Frederick Wilson 1858-1932, attributed designer, United States, glass, pigment, lead, and copper foil, Museum Purchase: The Oliver Family Foundation; made possible in part through the Episcopal Diocese of Southern Ohio, 2011.18



## LOOK AGAIN:

Compare this window to other stained glass windows you may have seen, what makes it unique?



*Expressive strokes of warm and cool colors share the canvas in this multi-hued masterpiece.*

## ACTIVITY:

This painting vibrates with color.

Which are the primary colors? Secondary colors?

Take turns writing all the colors you can find in this work.



Hans Hofmann (1880-1966), Germany, *Toward Crepuscule*, 1963, oil on canvas, The Edwin and Virginia Irwin Memorial, 1968.264

## LOOK AGAIN:

Stare at the line where the green and red squares meet for 30 seconds. Now blink once and look at the white wall. What happened?



# Lively Lines

Straight, curved, squiggly or zigzag.  
Discover magnificent marks as you  
meander through the museum.

*Lines, both thick and thin, float through a tranquil blue sky in this massive multicolored mural.*

## ACTIVITY:

Joan Miró said that watching kids fly kites outside his studio window inspired this painting.  
Design a kite for our mural.



Joan Miró (1893-1983), Spain, *Mural for the Terrace Plaza Hotel, Cincinnati*, 1947, oil on canvas, Gift of Thomas Emery's Sons, Inc, 1965.514

## LOOK AGAIN:

This mural's curved and straight lines make lots of shapes, some recognizable, others not so much. What do you see?



*Does it register with you how many lines decorate this mummy's final resting place?*

## **ACTIVITY:**

This sarcophagus uses lines to divide up this person's story into registers.

Choose one section, write a poem about what is going on.



Egypt, *Mummy Sarcophagus*, 332 BCE-30 BCE, wood with painted decoration, Gift of Millard F. and Edna F. Shelt, 1947.275

## **LOOK AGAIN:**

The lines around this mummy's head represents hair. If you were going to draw your hair what kinds of lines would you use?

*You must eat breakfast before opening presents - rules are hard when you want to have fun!*

## ACTIVITY:

Straight lines create a sense of rhythm in this family scene.

How many straight lines can you find in this holiday picture?



Horace Pippin (1888-1946), United States, *Christmas Morning, Breakfast*, 1945, oil on canvas, 1959.47

## LOOK AGAIN:

This painting is based on one of the artist's childhood memories.

What is one of your favorite memories?



*Zigzag your way to find this energetic work.*

## **ACTIVITY:**

Franz Kline created a smaller study and a bigger finished painting of this subject.

Mimic how he would have moved his brush to create both sizes.



Franz Kline (1910-1962), United States, *Horizontal Rust*, 1960, oil on canvas, The Edwin and Virginia Irwin Memorial, 1982.85

## **LOOK AGAIN:**

This artist called his works "painting experiences."

What do you think he meant by that?



*At the CAM you need to look out a window in the Cincinnati Wing to find this angular artwork.*

## ACTIVITY:

Steel beams intersect in straight lines in this sculpture. What if the lines were curved?

Draw a picture of your own curving Di Suvero.



Mark Di Suvero (1933-), United States, *Atman*, 1978-1979, steel, unpainted by 1985, with swinging bed, The Edwin and Virginia Irwin Memorial, 1986.36

## LOOK AGAIN:

What if *Atman* was painted a different color?

How would a different color change your viewing of this work?



# Super Shapes

Circle, rectangle, rhombus and square  
- all the shapes are here.

*Beaded triangles, squares and diamonds decorate this vibrant Yoruban piece.*

## ACTIVITY:

This sheath is an emblem of the Yoruban deity, Orisha Oko.

Draw your own version using your own designs.

Unattributed Yoruba Artist, Nigeria, *Sheath (ewu opa orisha Oko)*, mid-20th century, leather, cloth, beads, Gift of the Edwards-Britt Collection, 1982.234



## LOOK AGAIN:

It is very important that the staff held by this sheath does not touch the ground.

Why do you think that is?



*A pulsating orange rectangle dominates the scene in this painting.*

## **ACTIVITY:**

Mark Rothko was all about expressing emotions.

Write a rectangle shape poem to express your feelings after taking a long look.



Mark Rothko (1906-1970), United States, Brown, *Orange, Blue on Maroon*, 1963, oil on canvas, The Edwin and Virginia Irwin Memorial, 1982.135

## **LOOK AGAIN:**

Why do you think Rothko chose the colors he did and what effect do they have on this painting?

*What has a circular body and eight (or maybe only six) legs and lives in Cameroon?*

**ACTIVITY:**

Imagine wearing this  
arachnid artwork, how  
would you move.

Take a short video of your  
own mask dance.



Unattributed Bamum Artist, Cameroon, *Helmet Mask*, 20th century, wood, Museum Purchase: Gift of Al Vontz, 1991.133

**LOOK AGAIN:**

The artist who created this  
mask used geometric  
shapes to create the  
spiders and facial features.

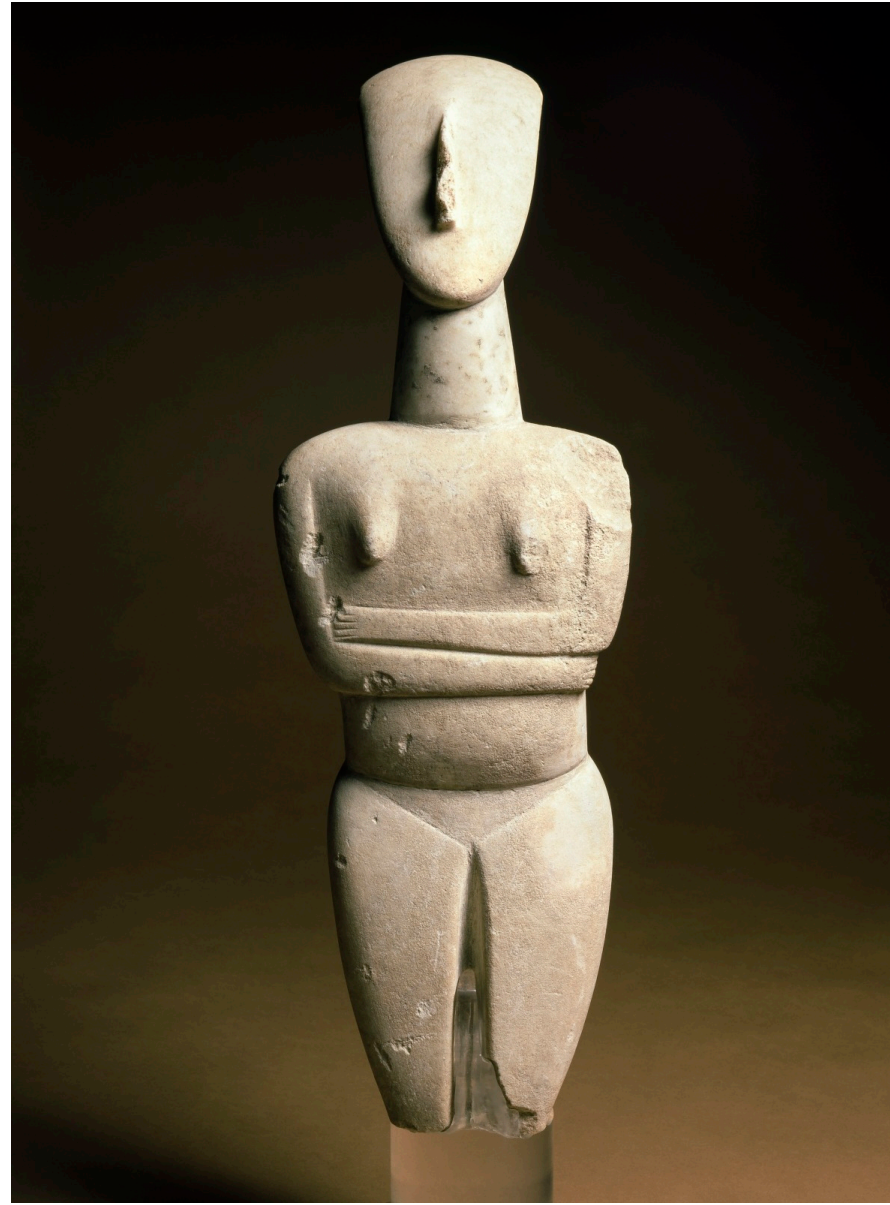
Why do you think he did  
that?

*At the CAM you may have to circle around the Antiquities gallery to find this reclining Greek figure.*

**ACTIVITY:**

What shapes can you find  
in this geometric figure?

Draw them.



Greece, *Cycladic Figure*, 2500 BCE-2400  
BCE, marble, Museum Purchase, 1960.484

**LOOK AGAIN:**

The Cyclades island group  
is in the Aegean Sea.

It is thought that they  
surround the birthplace of  
which Greek god?

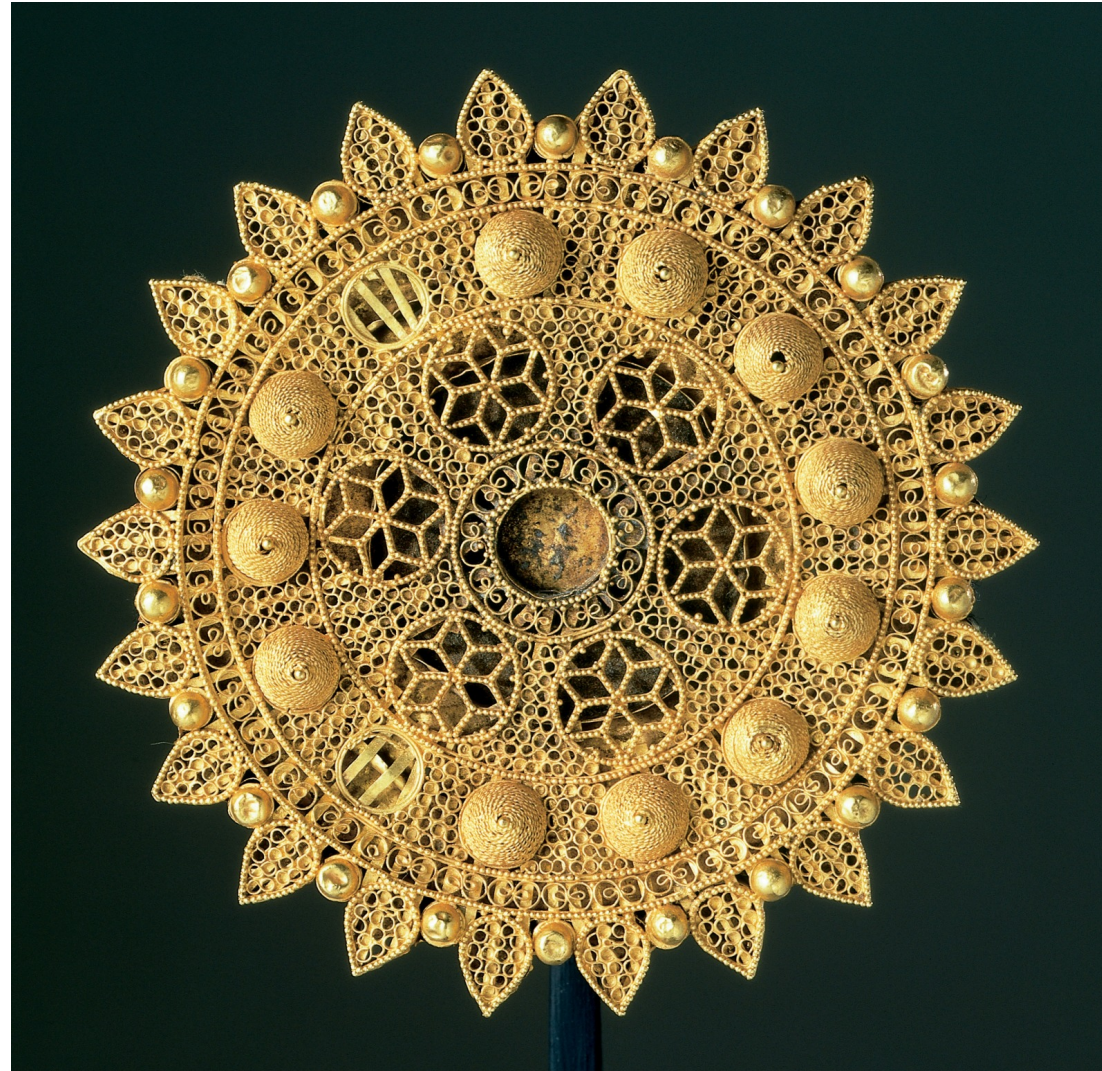


*Sometimes all that glitters is gold.*

## ACTIVITY:

This roundel is full of shapes.  
It would have also been  
decorated with beautiful  
gems.

Draw and color your own  
roundel.



Iran, *Roundel*, 11th century, gold sheet, wire, filigree and granulation; formerly set with stone, Gift of John J. Emery, 1961.289

## LOOK AGAIN:

Why do you think Islamic art  
uses a lot geometric shapes  
and abstract flowers?



# Terrific Textures

These tantalizing textures tease your sense of touch. Your task is to touch only with your eyes.

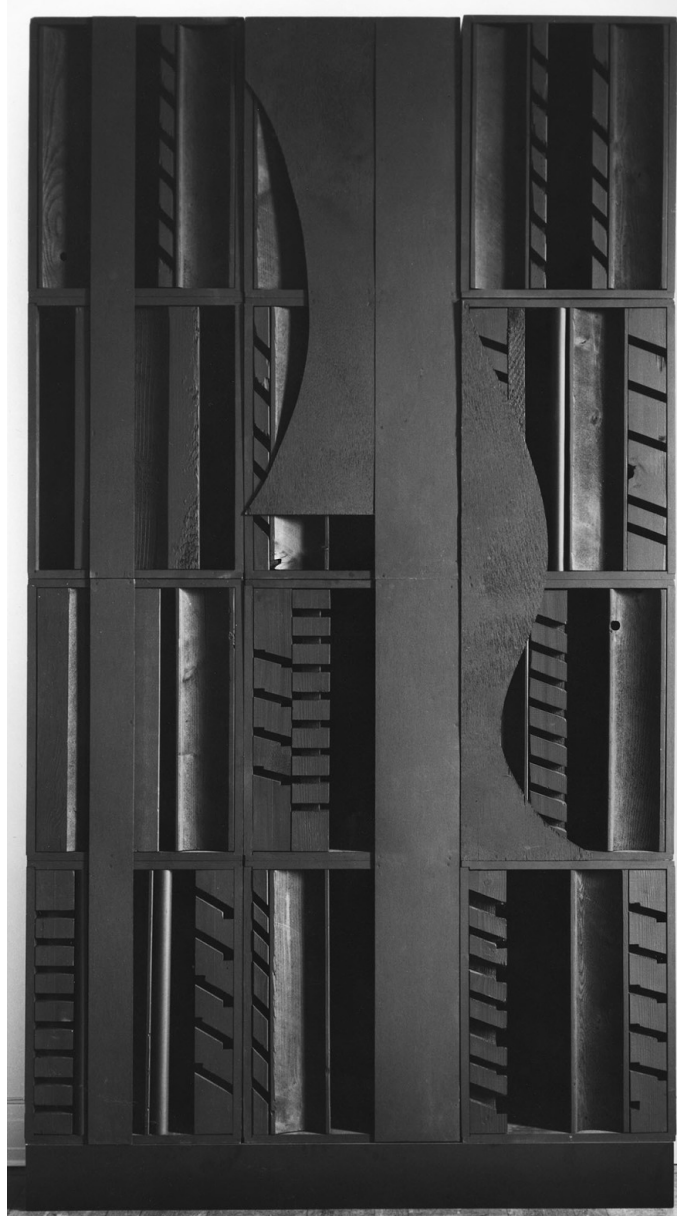
*A rough exterior with smooth lines and sharp edges make this jet black nightscape tempting to touch.*

## **ACTIVITY:**

This sculpture is made  
from found objects.

Pick three sections of this  
work and draw them.

Louise Nevelson (1899-1988), United States,  
*Nightscape III*, 1974, wood, Museum Purchase with  
the aid of funds from the Cincinnati Art Museum  
Women's Committee, Pogue's and the National  
Endowment for the Arts, 1975.264



## **LOOK AGAIN:**

This sculpture is black and  
multi-textured. Imagine it  
was colorful and smooth.

How would that change  
your viewing of this piece?



*This cozy corner is just the place to find a ton of texture to see and feel.*

## ACTIVITY:

Can you identify the different textures in this painting.

Take turns and create a list.

Which one is your favorite? Why?



Lilly Martin Spencer (1822-1902), United States, *Patty-Cake*, circa 1855, oil on canvas, Museum Purchase: Bequest of Mr. and Mrs. Walter J. Wichgar, 1999.214

## LOOK AGAIN:

Lilly Martin Spencer painted mostly scenes of mothers and children to support her family.

Why do you think this was a popular subject?

*Good Night and Good Rest - we hope you don't have nightmares under this crazily carved canopy!*

## ACTIVITY:

Draw a picture of one of the  
flowers or  
birds on this bed.

Describe how you think it  
would feel.



*Bedstead*, 1882-1883, Benn Pitman (1822-1910), designer; Adelaide Nourse Pitman (1859-1893), carver; Elizabeth Nourse (1859-1893), painter, United States, American black walnut and painted panels, Gift of Mary Jane Hamilton in memory of her mother Mary Luella Hamilton, made possible through Rita S. Hudepohl, *Guardian*, 1994.61

## LOOK AGAIN:

All the flowers and plants on  
this bed are native to this  
region of Ohio.

How many can you identify?



*This beautifully carved bodhisattva beckons you to join her in the CAM's Asian galleries.*

## **ACTIVITY:**

This bodhisattva sits in the "royal ease" pose.

Can you mimic this stately stance?

Try it, take a picture and share!  
#MyCAMArtHunt



China, *Guanyin*, 12th Century-Early 13th Century, wood with traces of pigments and gilding, Museum Purchase, 1950.73

## **LOOK AGAIN:**

What different textures has the artist included to capture Guanyin's appearance?



*You don't even need to feel this perfectly posed profile to know it was carved by a genius.*

## ACTIVITY:

Wavy hair, curly beard,  
feathery wings - this man is  
full of all kinds of texture.  
How do you think he feels?



Iraq, Relief: *Winged Genius*, circa 870 BCE, Museum Purchase, 1952.7

## LOOK AGAIN:

This *Winged Genius* is one of a pair of carved reliefs from a temple in what is today Iraq.

Why do you think the artist added so many fine details?



# Fabulous Forms

Cubes, cones, pyramids and spheres,  
art can come in many forms.

*Have you ever walked around a mountain range? At the CAM you can!*

## **ACTIVITY:**

This form can be overwhelming to view.

Take turns creating a list of words describing your impressions of this piece.



Ursula von Rydingsvard (1942-), United States, *Lace Mountains*, 1989, cedar, graphite, Museum Purchase: Weston Fund for Contemporary Art, 2004.1137

## **LOOK AGAIN:**

When you hear the title *Lace Mountains*, you may think of a landscape of wintry peaks.

What title would you give this piece?



*Though smaller in scale than my sister sculpture in downtown Cincinnati, I am still a sight to see.*

## **ACTIVITY:**

Closely observe 3 details  
on this model.

On your next visit to  
Fountain Square compare  
them to the larger work.

Share differences.

August von Kreling (1819-1876), Germany, *Model for the Tyler Davidson Fountain, Cincinnati*, circa 1868, bronze, Bequest of Eugene Booth, 1952.198



## **LOOK AGAIN:**

This sculpture shows people  
enjoying the benefits of  
water.

What scenes would you have  
included?

*Real lions won't let you walk around them and view them from all sides. You can at the CAM.*

## ACTIVITY:

Our guard lion stood on a high pedestal, to be seen from below. Draw a picture from that view.



Greece, *Lion Funerary Monument*, circa 350 BCE, pentelic marble, John J. Emery Fund, 1946.40

## LOOK AGAIN:

Downward facing lion? The sculptor for this grave guardian used a dog for a model.

Where is that the most obvious on this work?

*The race is on! Grab an oar and a few friends and join our canoe regatta.*

## ACTIVITY:

You are competing in a boat race.

Design your own canoe, don't forget to include a special carved prow to show up in the water.



Cameroon, *Model Racing Canoe*, late 19th century, wood, pigment,  
Museum Purchase: Steckelmann Collection, gift by special subscription,  
1890.1561

## LOOK AGAIN:

Model canoes like this were sold as souvenirs.

What is your favorite vacation souvenir?



*Her dress is here but where is she?*

## **ACTIVITY:**

Karen LaMonte creates sculptures of clothed people. The trick is that she removes the person.

Draw a picture of a person in her style.

Karen LaMonte (1967-), United States, *Seated Dress with Impression of Drapery*, 2005, cast, sandblasted and acid-etched glass, The Nancy and David Wolf Collection, 2016.2



## **LOOK AGAIN:**

Imagine if this sculpture was in wood or stone.

Would that change how you view this figure? How and why?

**MyCAM** is based on JourneyMaker, the family interactive experience designed and developed by the Art Institute of Chicago.

The museum worked with Paperplane Creative and Clifton Labs to bring JourneyMaker to the Cincinnati.

MyCAM is generously supported by The Ward E. Bullock Endowment for Interactive Education.