

## Collection Highlights: Summer Artworks

The sun is shining and the beach is calling—enjoy these 10 artworks from the museum’s permanent collection to get you in the summer spirit.

The museum is actively engaged in the digitization of our permanent collection, which contains over 67,000 works of art. While the entire museum collection is not currently online,

images and information are frequently being added and updated. Please note that not all objects featured online are currently on view in our galleries. Explore the #CAMcollection by visiting [cincinnatiartmuseum.org/collection](https://cincinnatiartmuseum.org/collection).

### Frank Duveneck



Gallery 110—Second floor

Frank Duveneck (American, 1848–1919), *Siesta*, 1886, oil on canvas, Bequest of Mary O'Brien Gibson in memory of her parents, Cornelius and Anna Cook O'Brien, 2007.68

### Frank Harmon Myers



Gallery 123—First Floor

Frank Harmon Myers (American, 1899–1956), *In the Park*, 1927, oil on canvas, Gift of Alice Palo Hook, 1972.249

### Edward Henry Potthast



Gallery 123—First Floor

Edward Henry Potthast (American, 1857–1927), *A Sailing Party (Going for a Sail)*, circa 1924, oil on canvas, Gift of Henry M. Goodyear, M.D., 1984.218

**CAM Look:**  
[bit.ly/CAMLookHaiku](https://bit.ly/CAMLookHaiku)

### Myer Bael



Gallery 123—First Floor

Myer Bael (American, 1904–1946), *Ault Park Promenade*, 1934, oil on canvas, Gift of Jane F. Braunstein, 1974.131

### Maria van Oosterwijck

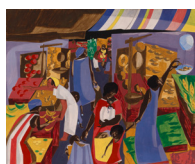


Gallery 205—Second Floor

Maria van Oosterwijck (Dutch, 1630–1693), *Flower Still Life*, 1669, oil on canvas, Bequest of Mrs. L.W. Scott Alter, 1988.150

**CAM Look:**  
[bit.ly/Oosterwijck](https://bit.ly/Oosterwijck)

### Jacob Lawrence



Gallery 211—Second Floor

Jacob Lawrence (American, 1917–2000), *Fruits and Vegetables*, 1959, tempera on hardboard, Mr. and Mrs. Harry S. Leyman Endowment, 2003.260, © 2020 The Jacob and Gwendolyn Knight Lawrence Foundation, Seattle / Artists Rights Society (ARS), New York

**CAM Look:**  
[bit.ly/JacobLawrenceFruitsandVeg](https://bit.ly/JacobLawrenceFruitsandVeg)

### Frank Benson



Gallery 216—Second Floor

Frank Benson (American, 1862–1951), *Evening Light*, 1908, oil on canvas, Kate Banning Fund, 1909.33, © The Frank W. Benson Trust

### Frederick Frieseke



Gallery 216—Second Floor

Frederick Frieseke (American, active France, 1874–1939), *Under the Willows*, before 1909, oil on canvas, Annual Membership Fund Purchase, 1916.281

### William Merritt Chase



Gallery 216—Second Floor

William Merritt Chase (American, 1849–1916), *Summer at Shinnecock Hills*, 1891, oil on canvas, Bequest of Mr. and Mrs. Walter J. Wichgar, 1978.334

**CAM Look:**  
[bit.ly/DebussyandCAM](https://bit.ly/DebussyandCAM)

### W.H. Atkins



Gallery 219—Second Floor

W.H. Atkins (American, active mid-19th century), *Still Life with Watermelon*, circa 1860, oil on cardboard, Centennial Gift of Edgar William and Bernice Chrysler Garbish, 1981.417

